

**PGR**<sup>®</sup>  
DRIVE TECHNOLOGIES

**Enerjinizi harekete geçiriyoruz...**  
**Transforming your energy into motion...**

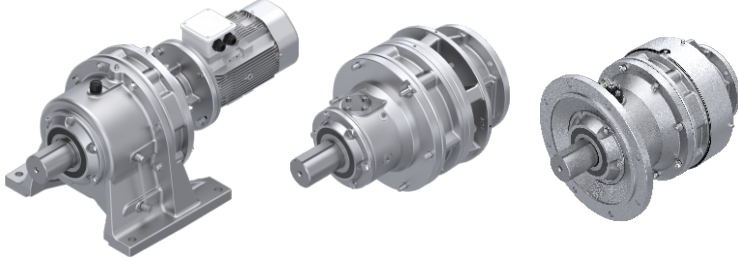


# YENİ ÜRÜNLER / NEW PRODUCTS



## PCD Serisi

### Sikloid Serisi Redüktörler / Cycloid Series Gear Units



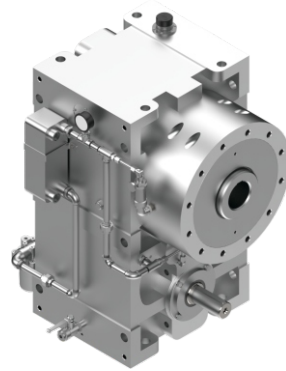
Güç / Power	0.12 ... 95 kW
Moment / Torque	3 ... 74490 Nm
Tahvil / Ratio	6 ... 7569

## PEX Serisi



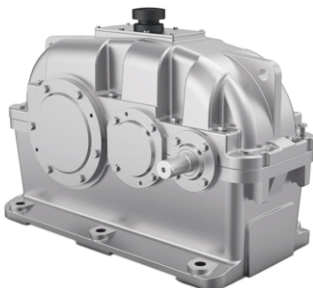
### Ekstruder Redüktörleri / Extruder Gearboxes

Güç / Power	7.5 ... 300 kW
Moment / Torque	1100 ... 160800 Nm
Tahvil / Ratio	8 ... 50



## PZ Serisi

### Silindirik Redüktör / Cylindrical Gear Units



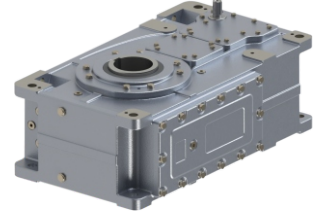
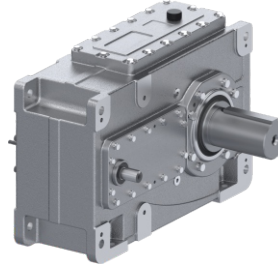
Güç / Power	4 ... 6666 kW
Moment / Torque	7.5 ... 1200 Nm
Tahvil / Ratio	1.25 ... 100

## PH Serisi



### Endüstriyel Tip Redüktörler / Industrial Type Gear Units

Güç / Power	3.5 ... 4650 kW
Moment / Torque	2400 ... 480000 Nm
Tahvil / Ratio	1.25 ... 450

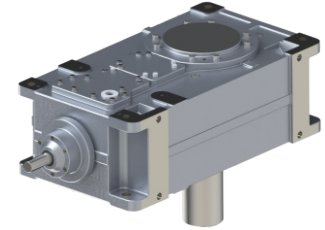
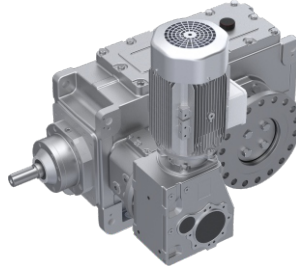


## PB Serisi



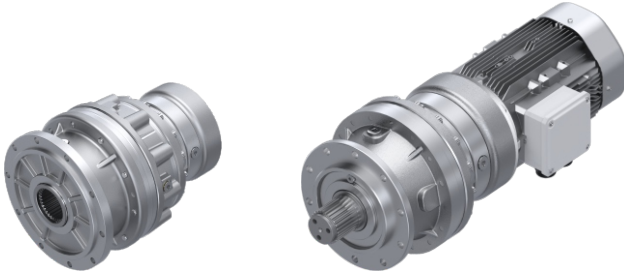
### Endüstriyel Tip Redüktörler / Industrial Type Gear Units

Güç / Power	3.5 ... 4650 kW
Moment / Torque	2400 ... 480000 Nm
Tahvil / Ratio	1.25 ... 450



## PL Serisi

### Planet Dişli Redüktörler / Planet Gear Units

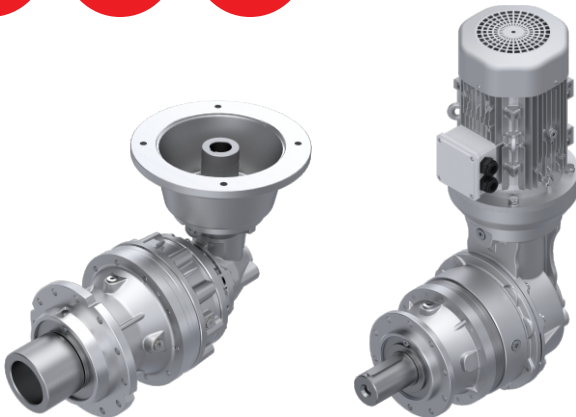


Güç / Power	0.12 ... 275 kW
Moment / Torque	86 ... 620000 Nm
Çıkış Devri / Output Speed	0.4 ... 400 rpm
Tahvil / Ratio	3.56 ... 2968.9



## PLB Serisi

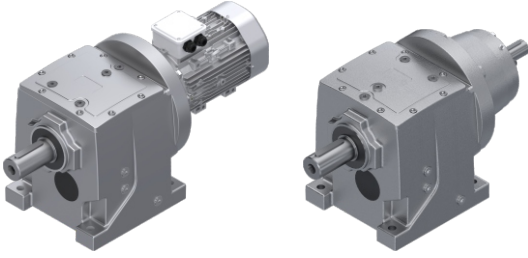
### Planet Dişli Redüktörler / Planet Gear Units



Güç / Power	0.12 ... 275 kW
Moment / Torque	86 ... 620000 Nm
Çıkış Devri / Output Speed	0.4 ... 400 rpm
Tahvil / Ratio	3.56 ... 2968.9



## PA Serisi

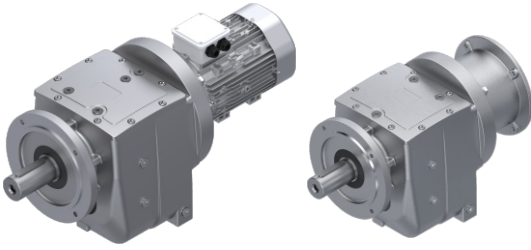


### Helisel Dişli Redüktörler / Helical Gear Units

Güç / Power	0.12 ... 240 kW
Moment / Torque	1 ... 23160 Nm
Çıkış Devri / Output Speed	0.13 ... 1129 rpm
Tahvil / Ratio	1.24 ... 11293.72



## PF Serisi



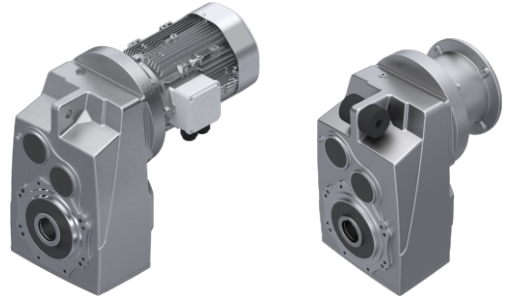
### Helisel Dişli Redüktörler / Helical Gear Units

Güç / Power	0.12 ... 240 kW
Moment / Torque	1 ... 23160 Nm
Çıkış Devri / Output Speed	0.13 ... 1129 rpm
Tahvil / Ratio	1.24 ... 11293.72

## PD Serisi

### Paralel Şaft Montajlı Redüktörler / Parallel Shaft Mounted Gear Units

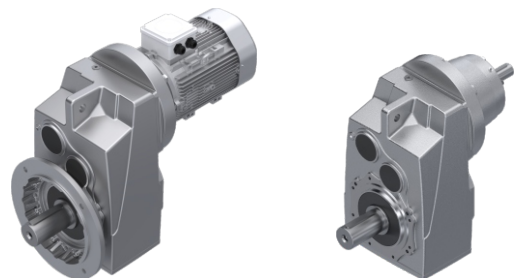
Güç / Power	0.12 ... 245 kW
Moment / Torque	3 ... 36928 Nm
Çıkış Devri / Output Speed	0.3 ... 348 rpm
Tahvil / Ratio	4.02 ... 6601.35



## PM Serisi

### Paralel Şaft Montajlı Redüktörler / Parallel Shaft Mounted Gear Units

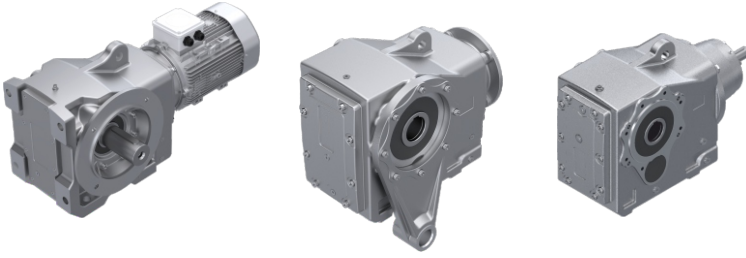
Güç / Power	0.12 ... 245 kW
Moment / Torque	3 ... 36928 Nm
Çıkış Devri / Output Speed	0.3 ... 348 rpm
Tahvil / Ratio	4.02 ... 6601.35



## PKD Serisi

### Helisel Konik Dişli Redüktörler / Helical Bevel Gear Units

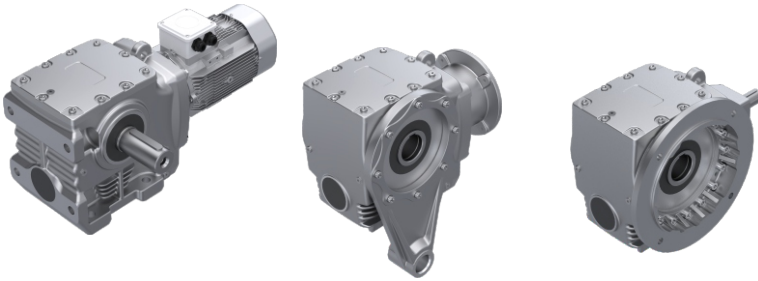
Güç / Power	0.12 ... 465 kW
Moment / Torque	3 ... 51784 Nm
Çıkış Devri / Output Speed	0.2 ... 363.5 rpm
Tahvil / Ratio	3.85 ... 7842.34



## PSH Serisi

### Helisel Sonsuz Dişli Redüktörler / Helical Worm Gear Units

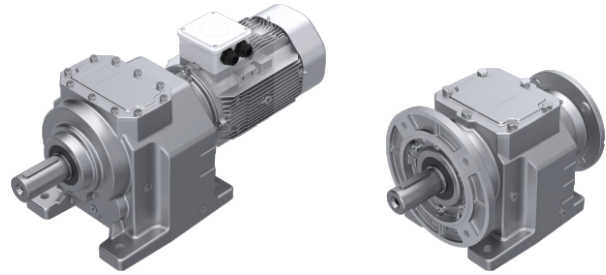
Güç / Power	0.12 ... 21.5 kW
Moment / Torque	3 ... 3157 Nm
Çıkış Devri / Output Speed	0.4 ... 318 rpm
Tahvil / Ratio	4.4 ... 3735.56



## A Serisi

### Helisel Dişli Redüktörler / Helical Gear Units

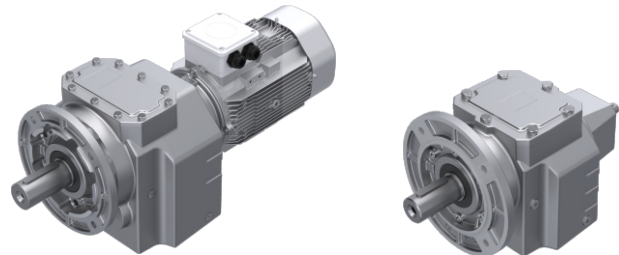
Güç / Power	0.09 ... 136 kW
Moment / Torque	1.25 ... 8000 Nm
Çıkış Devri / Output Speed	5 ... 1111 rpm
Tahvil / Ratio	1.26 ... 282.17



## F Serisi

### Helisel Dişli Redüktörler / Helical Gear Units

Güç / Power	0.09 ... 136 kW
Moment / Torque	1.25 ... 8000 Nm
Çıkış Devri / Output Speed	5 ... 1111 rpm
Tahvil / Ratio	1.26 ... 282.17

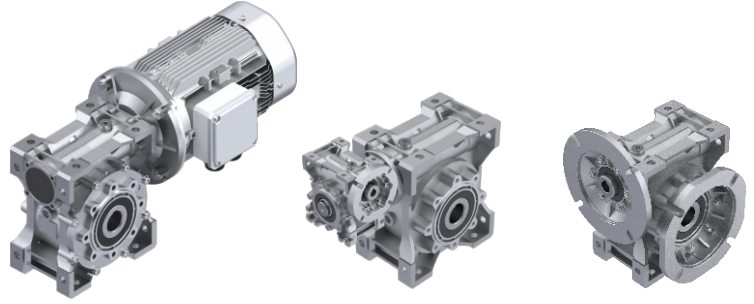


## PMRVPLUS / PRVPLUS Serisi



### Sonsuz Dişlilil Redüktörler / Worm Gear Units

Güç / Power	0.06 ... 27 kW
Moment / Torque	2 ... 6060 Nm
Çıkış Devri / Output Speed	0.35 ... 280 rpm
Tahvil / Ratio	5 ... 4000

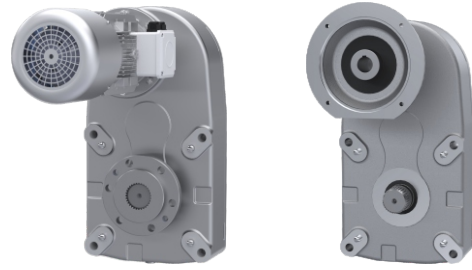


## PCS Serisi



### Vinç Redüktörleri / Crane Gear Units

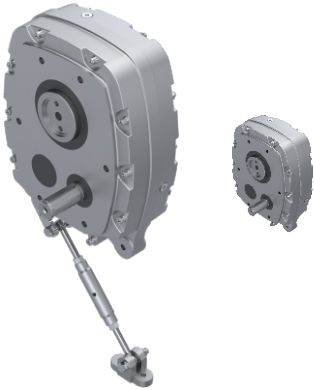
Kaldırma Hızı / Lifting Speed	0.5 ... 32 rpm
Güç / Power	0.37 ... 55 kW
Yük Kapasitesi / Load Capacity	1 ... 60 ton
Tahvil / Ratio	37.54 ... 231.9



## P Serisi

### Şaft Montajlı Helisel Dişlilil Redüktörler / Shaft Mounted Helical Gear Units

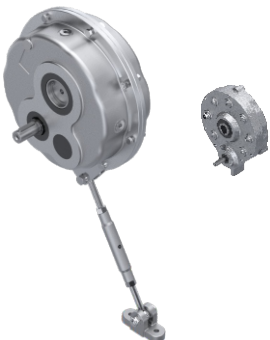
Güç / Power	0.5 ... 270 kW
Moment / Torque	260 ... 42700 Nm
Tahvil / Ratio	5 ... 20



## Pt/A Serisi

### Şaft Montajlı Helisel Dişlilil Redüktörler / Shaft Mounted Helical Gear Units

Güç / Power	0.5 ... 240 kW
Moment / Torque	145 ... 17830 Nm
Tahvil / Ratio	5 ... 35

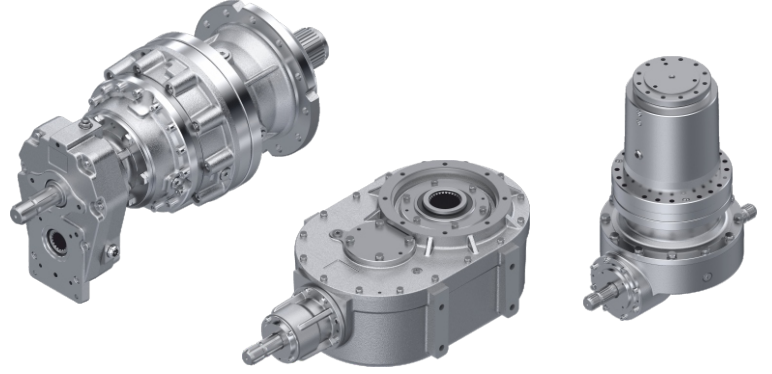


# PYK Serisi



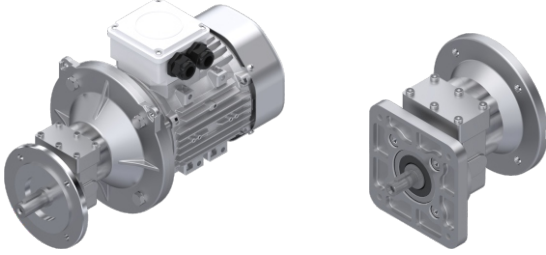
## Yem Karma Redüktörleri / Feeder Mixer Drives

Kapasite / Capacity	0.5 ... 20 m <sup>3</sup>
Moment / Torque	1000 ... 38250 Nm
Tahvil / Ratio	8.72 ... 54.2



# PX Serisi

## Kanatlı Yemleme Redüktörleri / Gearmotors for Poultry Farms

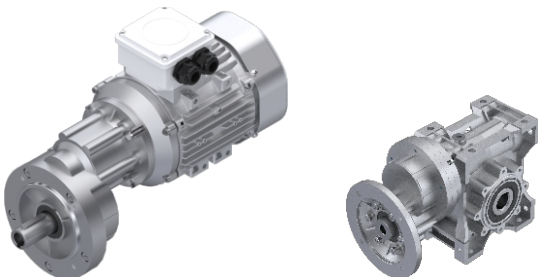


Güç / Power	0.45 ... 1.10 kW
Moment / Torque	19 ... 24 Nm
Tahvil / Ratio	2.5 ... 7.87



# PPC Serisi

## Kanatlı Yemleme Redüktörleri / Gearmotors for Poultry Farms



Güç / Power	0.55 ... 1.10 kW
Moment / Torque	12 ... 22 Nm
Tahvil / Ratio	3.0



**PGR**<sup>®</sup>  
DRIVE TECHNOLOGIES



[www.pgr.com.tr](http://www.pgr.com.tr)



[info@pgr.com.tr](mailto:info@pgr.com.tr)



ATA OSB Mah. Astim 1.Cad. No: 4 Efeler - Aydın / TÜRKİYE



+90 256 231 19 12



/company/polat-group-reduktor



/polatgroupreduktor



/PolatGroupReduktor