

[www.pgr.com.tr](http://www.pgr.com.tr)

**PGR<sup>®</sup>**  
DRIVE TECHNOLOGIES

| EN |

# GENERAL PART LIST

# PD-PM | SERIES

Parallel Shaft Mounted Gear Units

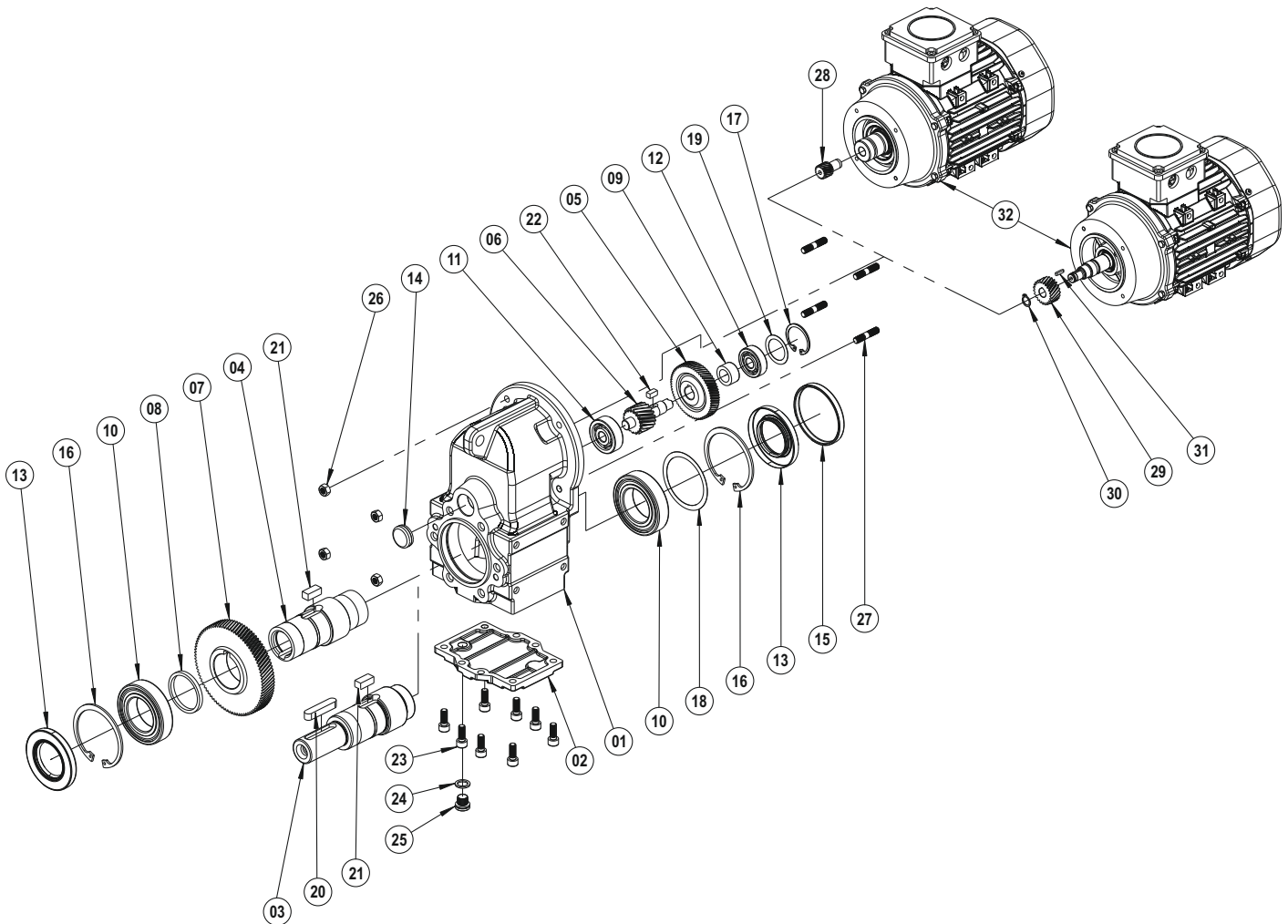
We reserve the right to our company to make changes or  
modifications to catalogue without prior notice.





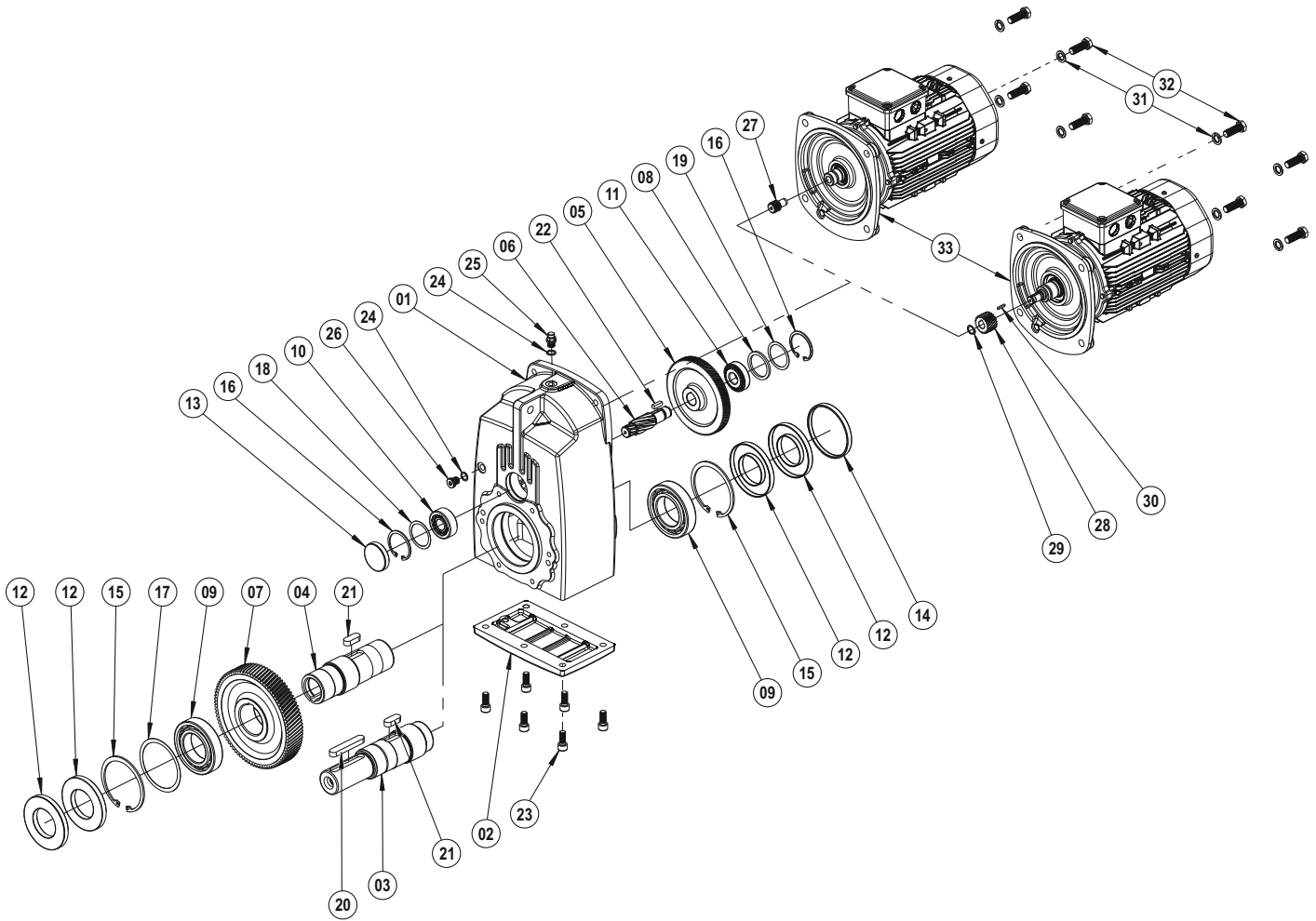


The exploded image may vary depending on the body and motor size, please contact us for the detailed exploded image.



- |                       |                              |
|-----------------------|------------------------------|
| 01 Gear Case          | 17 Circlip (DIN 472)         |
| 02 Cover              | 18 Shim (DIN 988)            |
| 03 Output Solid Shaft | 19 Shim (DIN 988)            |
| 04 Hollow Shaft       | 20 Key (DIN 6885)            |
| 05 Driving Gear       | 21 Key (DIN 6885)            |
| 06 Pinion Shaft       | 22 Key (DIN 6885)            |
| 07 Driven Gear        | 23 Bolt (DIN 912)            |
| 08 Washer             | 24 Washer (DIN 7603)         |
| 09 Spacer             | 25 Oil Plug (DIN 908)        |
| 10 Bearing            | 26 Nut (DIN 934)             |
| 11 Bearing            | 27 Stud Bolt (DIN 939)       |
| 12 Bearing            | 28 Driving Pinion            |
| 13 Oil Seal           | 29 Driving Pinion (With Key) |
| 14 Oil Cover          | 30 Circlip (DIN 471)         |
| 15 Oil Cover          | 31 Key (DIN 6885)            |
| 16 Circlip (DIN 472)  | 32 Motor                     |

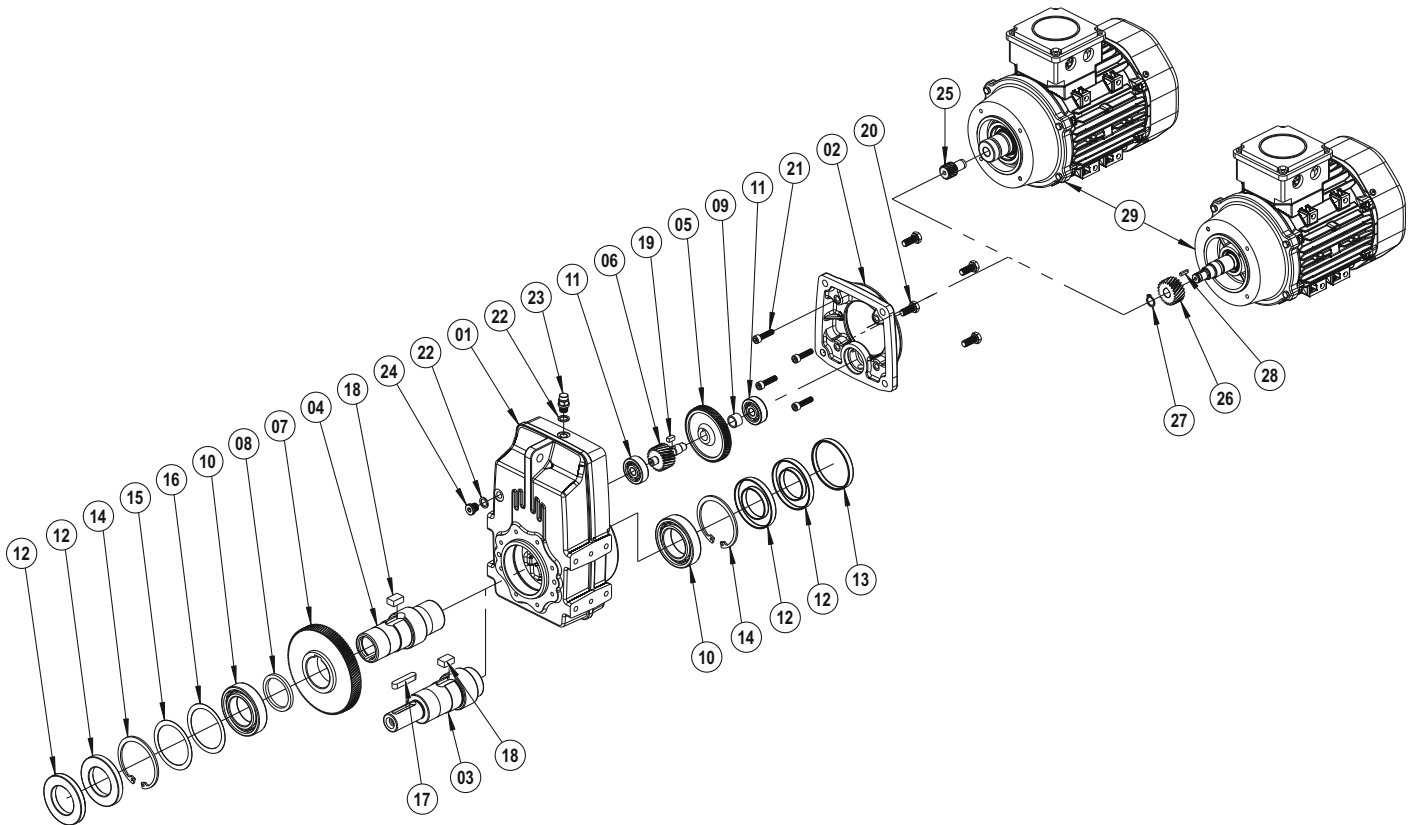
The exploded image may vary depending on the body and motor size, please contact us for the detailed exploded image.



- |                       |                              |
|-----------------------|------------------------------|
| 01 Gear Case          | 18 Shim (DIN 988)            |
| 02 Cover              | 19 Shim (DIN 988)            |
| 03 Output Solid Shaft | 20 Key (DIN 6885)            |
| 04 Hollow Shaft       | 21 Key (DIN 6885)            |
| 05 Driving Gear       | 22 Key (DIN 6885)            |
| 06 Pinion Shaft       | 23 Bolt (DIN 912)            |
| 07 Driven Gear        | 24 Washer (DIN 7603)         |
| 08 Washer             | 25 Vent Plug                 |
| 09 Bearing            | 26 Oil Plug (DIN 908)        |
| 10 Bearing            | 27 Driving Pinion            |
| 11 Bearing            | 28 Driving Pinion (With Key) |
| 12 Oil Seal           | 29 Circlip (DIN 471)         |
| 13 Oil Cover          | 30 Key (DIN 6885)            |
| 14 Oil Cover          | 31 Washer (DIN 127)          |
| 15 Circlip (DIN 472)  | 32 Bolt (DIN 933)            |
| 16 Circlip (DIN 472)  | 33 Motor                     |
| 17 Shim (DIN 988)     |                              |

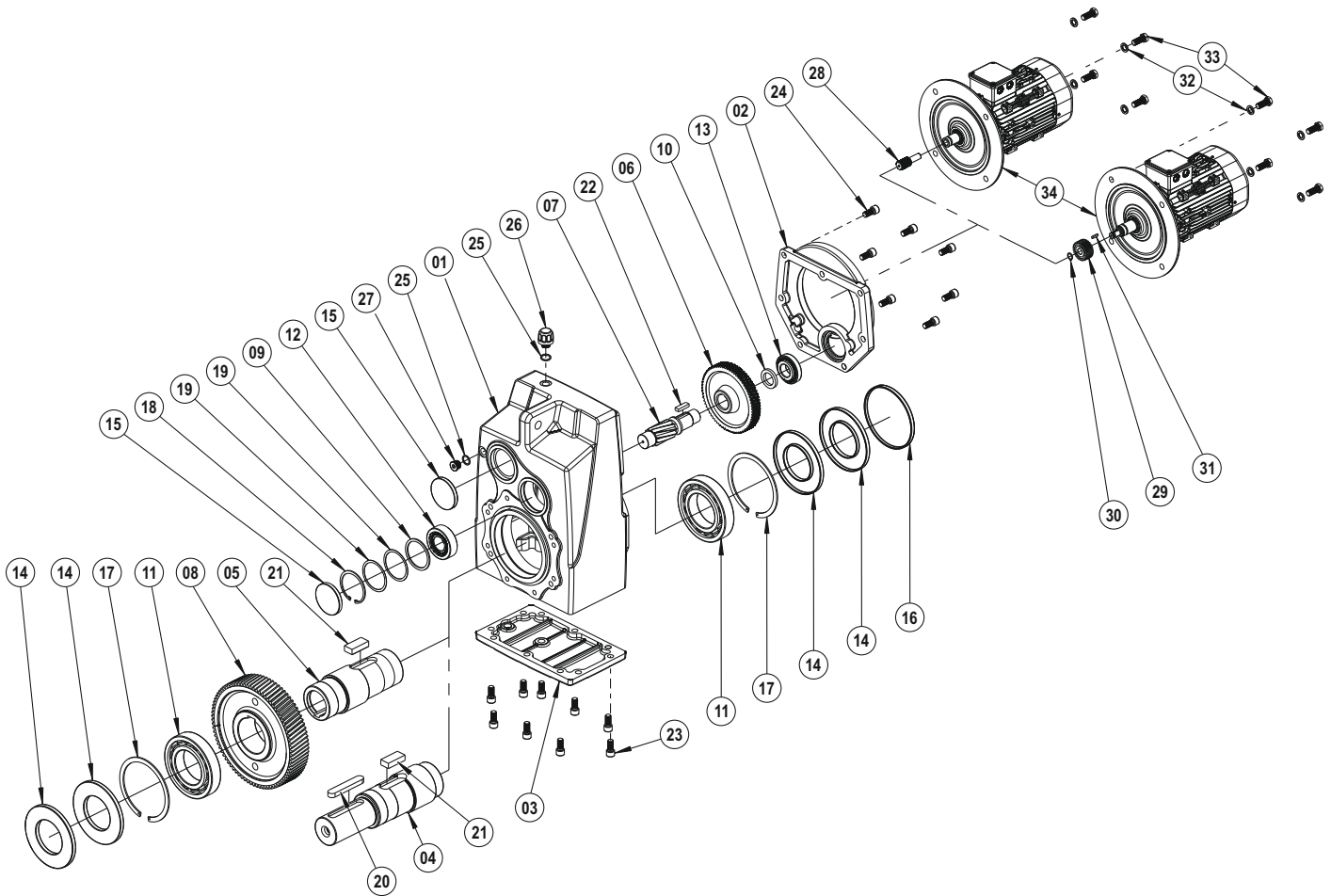
## PD / PM B02

The exploded image may vary depending on the body and motor size, please contact us for the detailed exploded image.



- 01 Gear Case
- 02 Intermediate Flange
- 03 Output Solid Shaft
- 04 Hollow Shaft
- 05 Driving Gear
- 06 Pinion Shaft
- 07 Driven Gear
- 08 Washer
- 09 Spacer
- 10 Bearing
- 11 Bearing
- 12 Oil Seal
- 13 Oil Cover
- 14 Circlip (DIN 472)
- 15 Shim (DIN 988)
- 16 Shim (DIN 988)
- 17 Key (DIN 6885)
- 18 Key (DIN 6885)
- 19 Key (DIN 6885)
- 20 Bolt (DIN 933)
- 21 Bolt (DIN 912)
- 22 Washer (DIN 7603)
- 23 Vent Plug
- 24 Oil Plug (DIN 908)
- 25 Driving Pinion
- 26 Driving Pinion (With Key)
- 27 Circlip (DIN 471)
- 28 Key (DIN 6885)
- 29 Motor

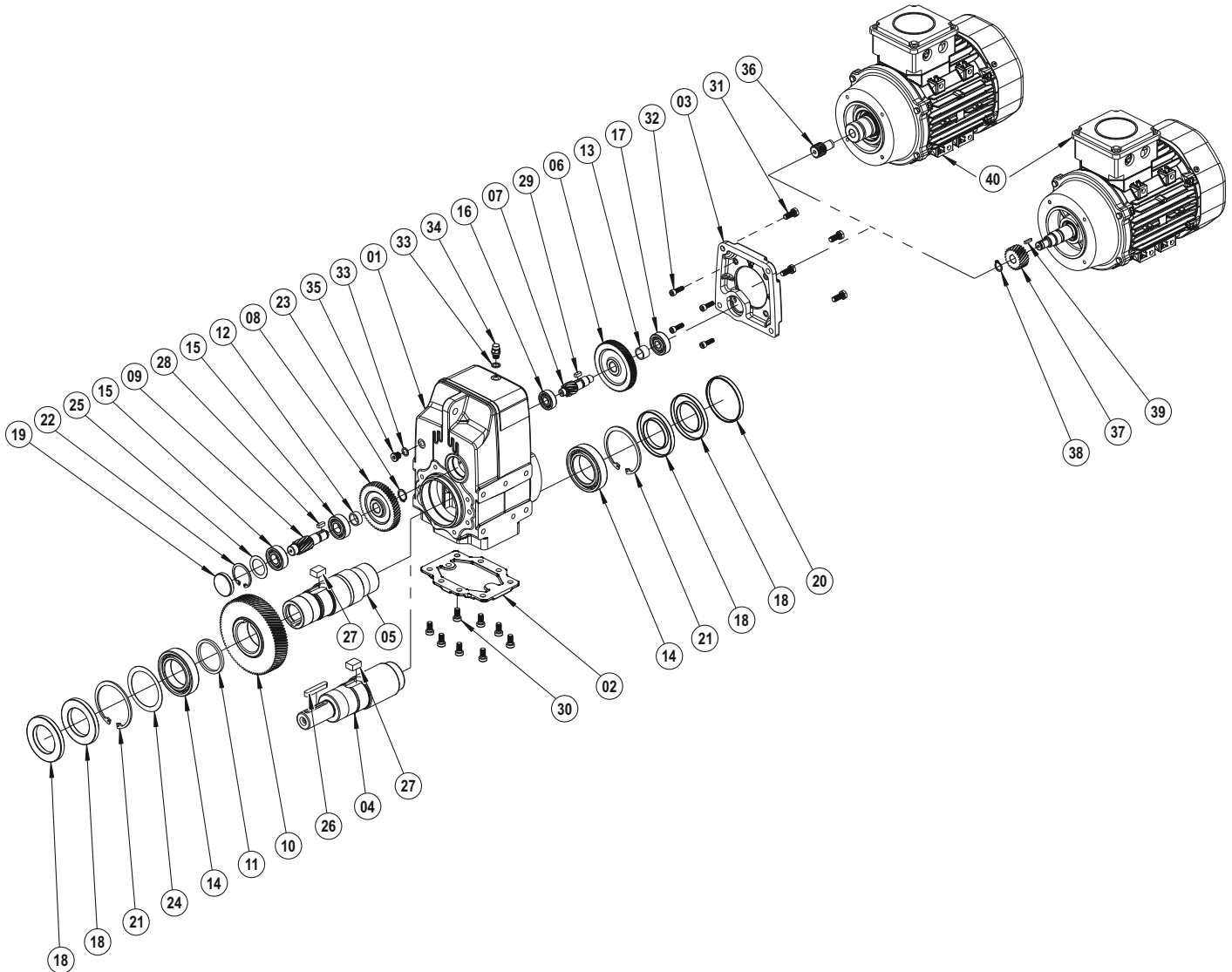
The exploded image may vary depending on the body and motor size, please contact us for the detailed exploded image.



- |                        |                              |
|------------------------|------------------------------|
| 01 Gear Case           | 18 Circlip (DIN 472)         |
| 02 Intermediate Flange | 19 Shim (DIN 988)            |
| 03 Cover               | 20 Key (DIN 6885)            |
| 04 Output Solid Shaft  | 21 Key (DIN 6885)            |
| 05 Hollow Shaft        | 22 Key (DIN 6885)            |
| 06 Driving Gear        | 23 Bolt (DIN 912)            |
| 07 Pinion Shaft        | 24 Bolt (DIN 912)            |
| 08 Driven Gear         | 25 Washer (DIN 7603)         |
| 09 Washer              | 26 Vent Plug                 |
| 10 Spacer              | 27 Oil Plug (DIN 908)        |
| 11 Bearing             | 28 Driving Pinion            |
| 12 Bearing             | 29 Driving Pinion (With Key) |
| 13 Bearing             | 30 Circlip (DIN 471)         |
| 14 Oil Seal            | 31 Key (DIN 6885)            |
| 15 Oil Cover           | 32 Washer (DIN 127)          |
| 16 Oil Cover           | 33 Bolt (DIN 933)            |
| 17 Circlip (DIN 472)   | 34 Motor                     |

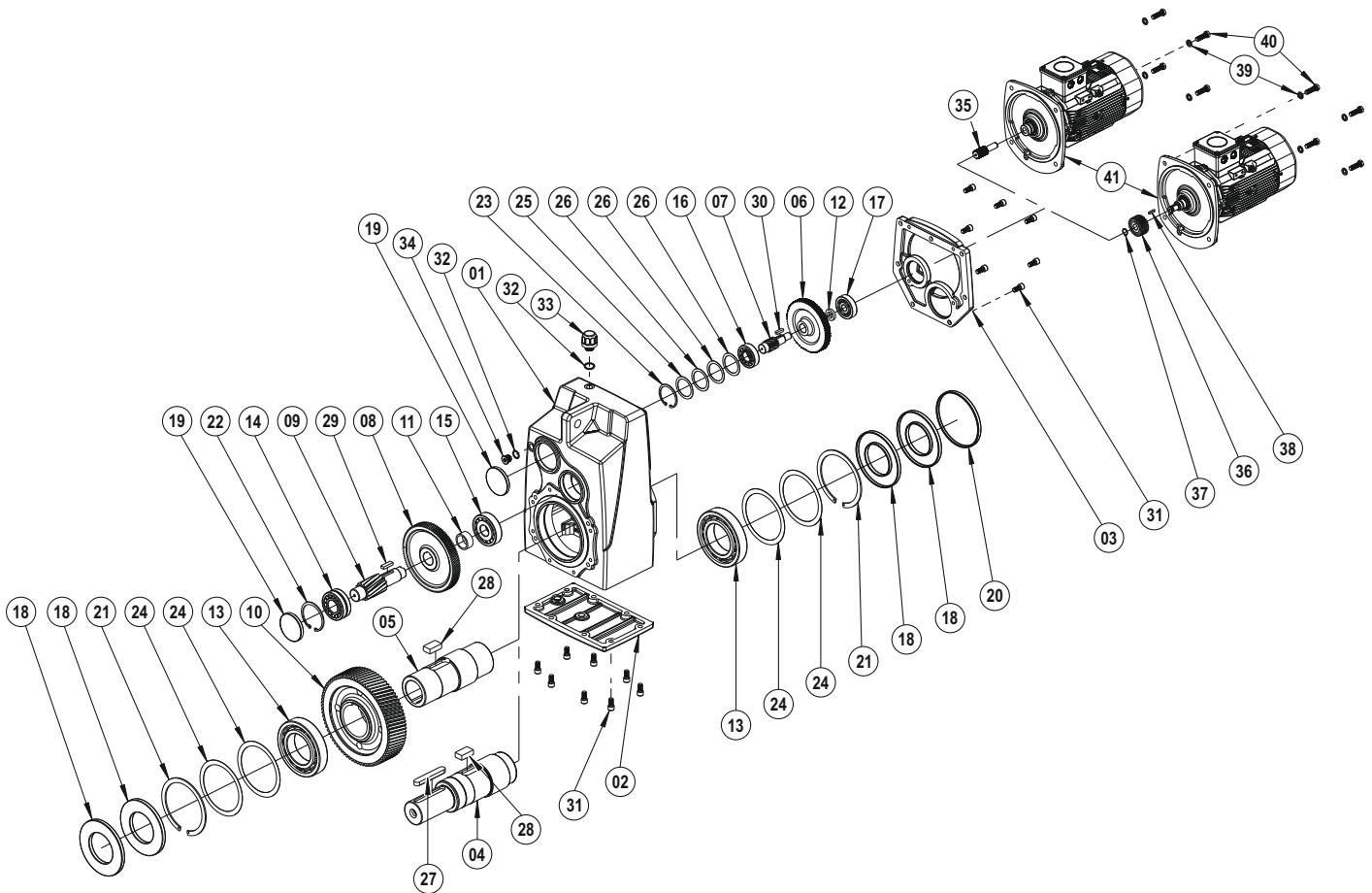
## PD / PM C13

The exploded image may vary depending on the body and motor size, please contact us for the detailed exploded image.



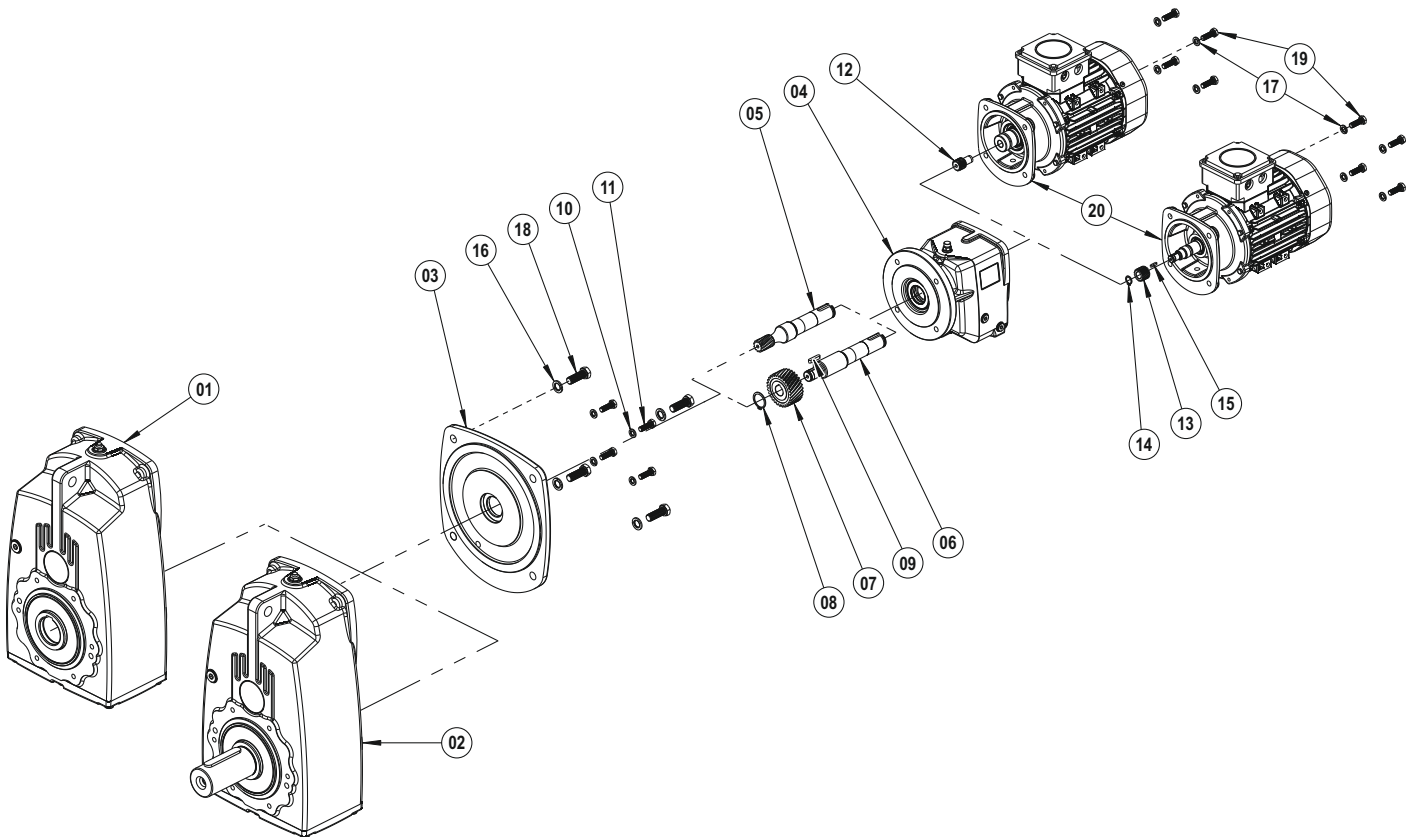
- |                        |                              |
|------------------------|------------------------------|
| 01 Gear Case           | 21 Circlip (DIN 472)         |
| 02 Cover               | 22 Circlip (DIN 472)         |
| 03 Intermediate Flange | 23 Circlip (DIN 471)         |
| 04 Output Solid Shaft  | 24 Shim (DIN 988)            |
| 05 Hollow Shaft        | 25 Shim (DIN 988)            |
| 06 Driving Gear        | 26 Key (DIN 6885)            |
| 07 Pinion Shaft        | 27 Key (DIN 6885)            |
| 08 Driven Gear         | 28 Key (DIN 6885)            |
| 09 Pinion Shaft        | 29 Key (DIN 6885)            |
| 10 Driven Gear         | 30 Bolt (DIN 912)            |
| 11 Washer              | 31 Bolt (DIN 933)            |
| 12 Spacer              | 32 Bolt (DIN 912)            |
| 13 Spacer              | 33 Washer (DIN 7603)         |
| 14 Bearing             | 34 Vent Plug                 |
| 15 Bearing             | 35 Oil Plug (DIN 908)        |
| 16 Bearing             | 36 Driving Pinion            |
| 17 Bearing             | 37 Driving Pinion (With Key) |
| 18 Oil Seal            | 38 Circlip (DIN 471)         |
| 19 Oil Cover           | 39 Key (DIN 6885)            |
| 20 Oil Cover           | 40 Motor                     |

The exploded image may vary depending on the body and motor size, please contact us for the detailed exploded image.



- |                        |                              |
|------------------------|------------------------------|
| 01 Gear Case           | 22 Circlip (DIN 472)         |
| 02 Cover               | 23 Circlip (DIN 472)         |
| 03 Intermediate Flange | 24 Shim (DIN 988)            |
| 04 Output Solid Shaft  | 25 Shim (DIN 988)            |
| 05 Hollow Shaft        | 26 Shim (DIN 988)            |
| 06 Driving Gear        | 27 Key (DIN 6885)            |
| 07 Pinion Shaft        | 28 Key (DIN 6885)            |
| 08 Driven Gear         | 29 Key (DIN 6885)            |
| 09 Pinion Shaft        | 30 Key (DIN 6885)            |
| 10 Driven Gear         | 31 Bolt (DIN 912)            |
| 11 Spacer              | 32 Washer (DIN 7603)         |
| 12 Spacer              | 33 Vent Plug                 |
| 13 Bearing             | 34 Oil Plug (DIN 908)        |
| 14 Bearing             | 35 Driving Pinion            |
| 15 Bearing             | 36 Driving Pinion (With Key) |
| 16 Bearing             | 37 Circlip (DIN 471)         |
| 17 Bearing             | 38 Key (DIN 6885)            |
| 18 Oil Seal            | 39 Washer (DIN 127)          |
| 19 Oil Cover           | 40 Bolt (DIN 933)            |
| 20 Oil Cover           | 41 Motor                     |
| 21 Circlip (DIN 472)   |                              |

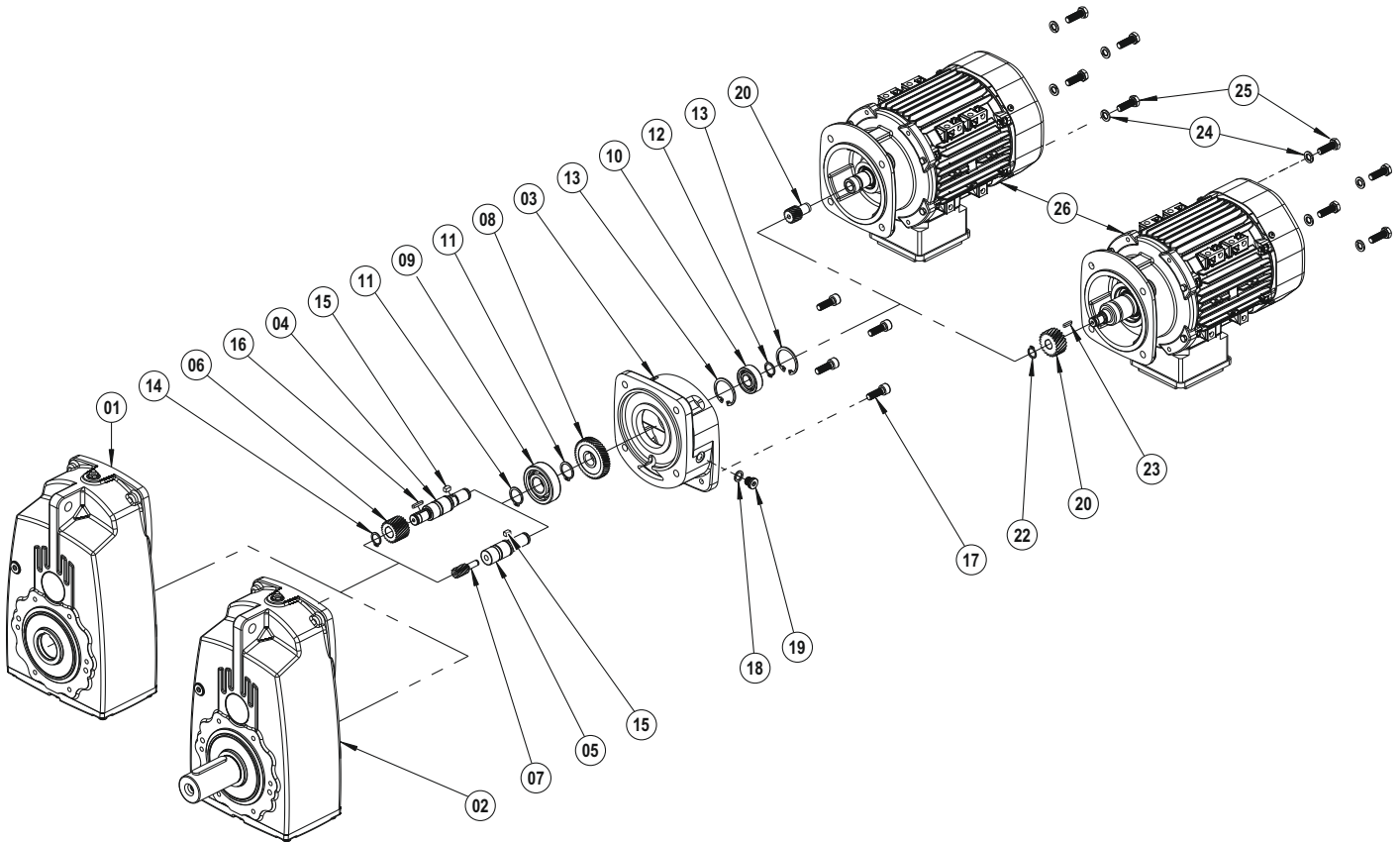
The exploded image may vary depending on the body and motor size, please contact us for the detailed exploded image.



- 01 PD Kit
- 02 PM Kit
- 03 Intermediate Flange
- 04 PF Kit
- 05 Intermediate Shaft (With Gear)
- 06 Intermediate Shaft (With Key)
- 07 Intermediate Gear (With Key)
- 08 Circlip (DIN 471)
- 09 Key (DIN 6885)
- 10 Washer (DIN 127)
- 11 Bolt (DIN 933)
- 12 Driving Pinion
- 13 Driving Pinion (With Key)
- 14 Circlip (DIN 471)
- 15 Key (DIN 6885)
- 16 Washer (DIN 127)
- 17 Washer (DIN 127)
- 18 Bolt (DIN 933)
- 19 Bolt (DIN 933)
- 20 Motor

### Reduction Gear Case

The exploded image may vary depending on the body and motor size, please contact us for the detailed exploded image.



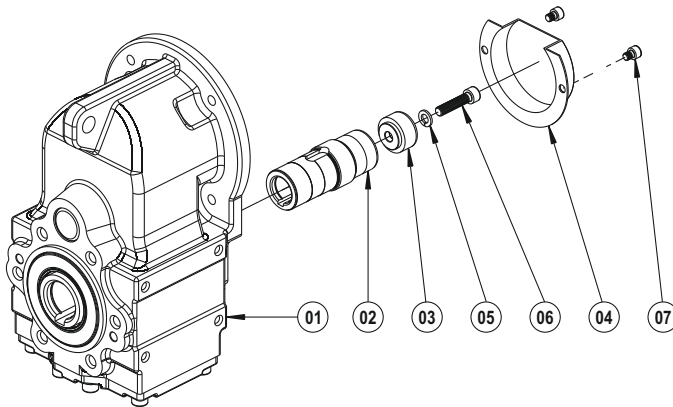
- 01 PD Kit
- 02 PM Kit
- 03 Reduction Gear Case
- 04 Intermediate Shaft (With Key)
- 05 Intermediate Shaft
- 06 Intermediate Gear (With Key)
- 07 Intermediate Gear
- 08 Driving Gear
- 09 Bearing
- 10 Bearing
- 11 Circlip (DIN 471)
- 12 Circlip (DIN 471)
- 13 Circlip (DIN 472)
- 14 Circlip (DIN 471)
- 15 Key (DIN 6885)
- 16 Key (DIN 6885)
- 17 Bolt (DIN 912)
- 18 Washer (DIN 7603)
- 19 Oil Plug (DIN 908)
- 20 Driving Pinion (With Key)
- 21 Driving Pinion
- 22 Circlip (DIN 471)
- 23 Key (DIN 6885)
- 24 Washer (DIN 127)
- 25 Bolt (DIN 933)
- 26 Motor



## PD / PM A02

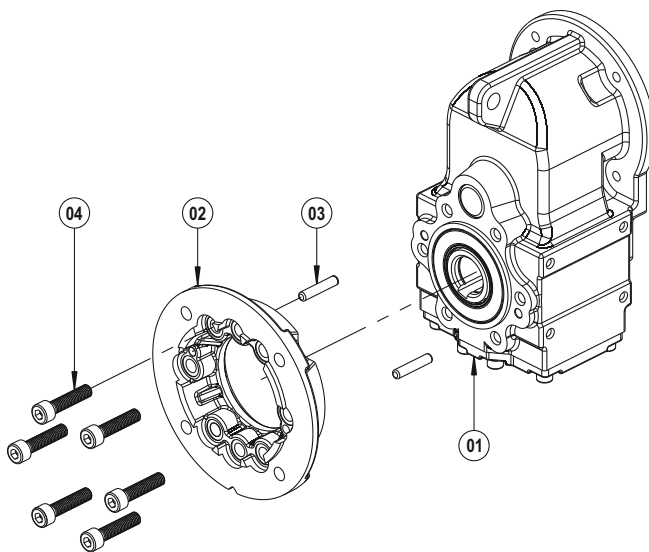
### Accessories

The exploded image may vary depending on the body and motor size, please contact us for the detailed exploded image.



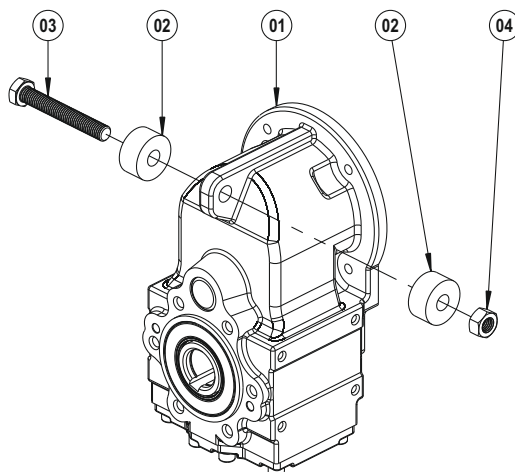
#### Puller, Protection Cover

- 01 PD Kit
- 02 Hollow Shaft
- 03 Puller Washer
- 04 Protection Cover
- 05 Washer (DIN 127)
- 06 Bolt (DIN 912)
- 07 Bolt (DIN 912)



#### B5 Output Flange

- 01 PD Kit
- 02 B5 Output Flange
- 03 Pin
- 04 Bolt (DIN 912)

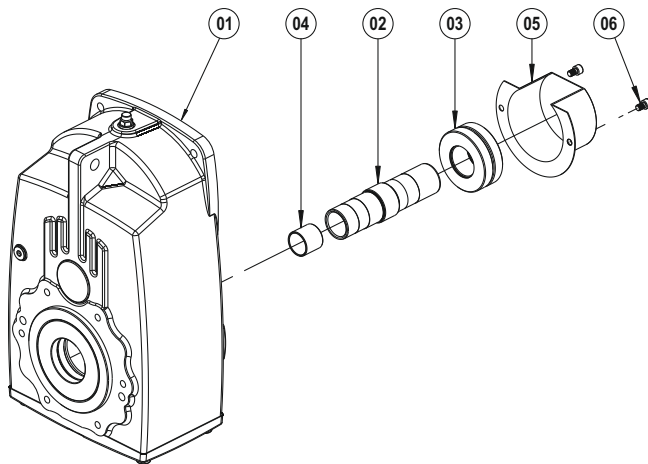


#### Rubber Buffer

- 01 PD Kit
- 02 Rubber Buffer
- 03 Bolt (DIN 933)
- 04 Nut (DIN 934)

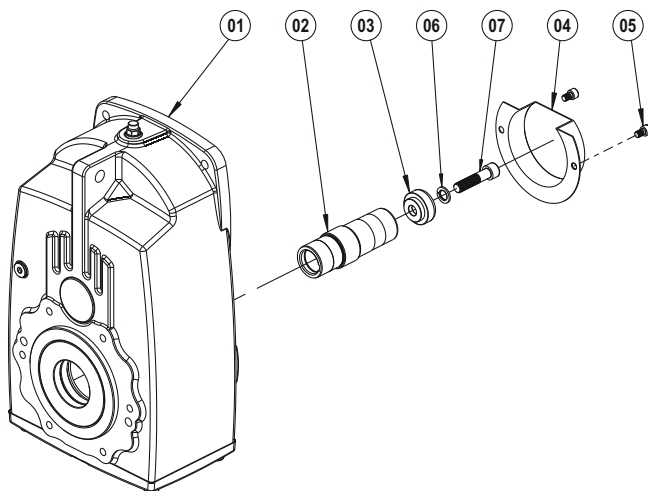
### Accessories

The exploded image may vary depending on the body and motor size, please contact us for the detailed exploded image.



#### Shrink Disk, Protection Cover

- 01 PD Kit
- 02 Shrink Disk Hollow Shaft
- 03 Shrink Disk
- 04 Shrink Disk Bushing
- 05 Shrink Disk Cover
- 06 Bolt (DIN 912)

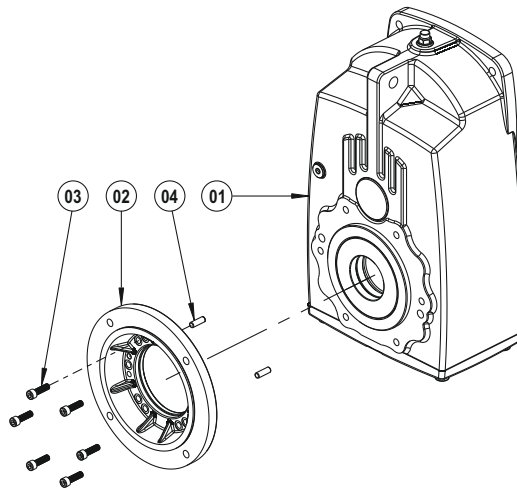


#### Puller, Protection Cover

- 01 PD Kit
- 02 Hollow Shaft
- 03 Puller Washer
- 04 Protection Cover
- 05 Bolt (DIN 912)
- 06 Washer (DIN 127)
- 07 Bolt (DIN 912)

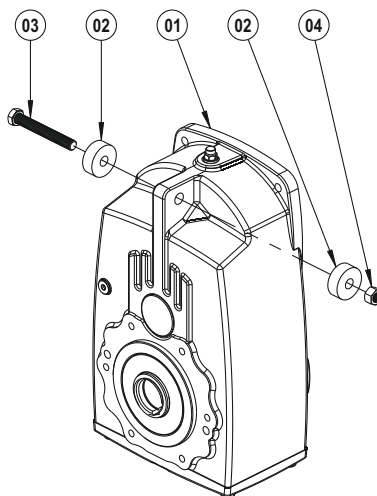
### Accessories

The exploded image may vary depending on the body and motor size, please contact us for the detailed exploded image.



#### B5 Output Flange

- 01 PD Kit
- 02 B5 Output Flange
- 03 Bolt (DIN 933)
- 04 Pin

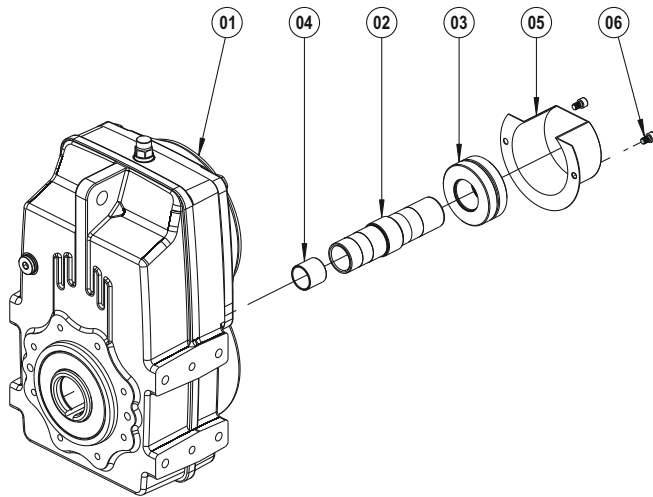


#### Rubber Buffer

- 01 PD Kit
- 02 Rubber Buffer
- 03 Bolt (DIN 933)
- 04 Nut (DIN 934)

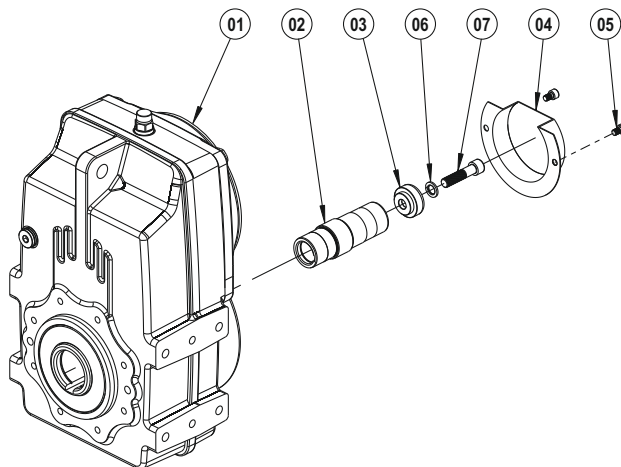
### Accessories

The exploded image may vary depending on the body and motor size, please contact us for the detailed exploded image.



#### Shrink Disk, Protection Cover

- 01 PD Kit
- 02 Shrink Disk Hollow Shaft
- 03 Shrink Disk
- 04 Shrink Disk Bushing
- 05 Shrink Disk Cover
- 06 Bolt (DIN 912)

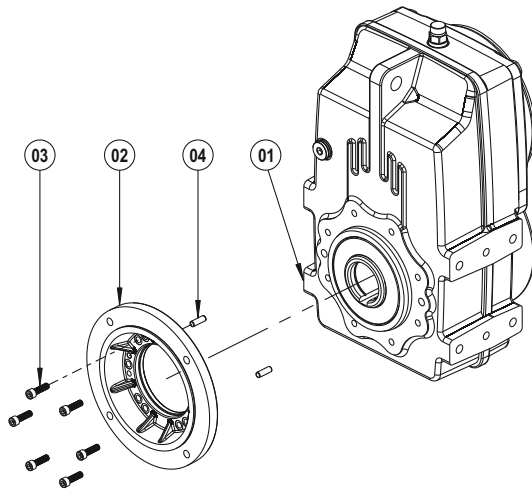


#### Puller, Protection Cover

- 01 PD Kit
- 02 Hollow Shaft
- 03 Puller Washer
- 04 Protection Cover
- 05 Bolt (DIN 912)
- 06 Washer (DIN 127)
- 07 Bolt (DIN 912)

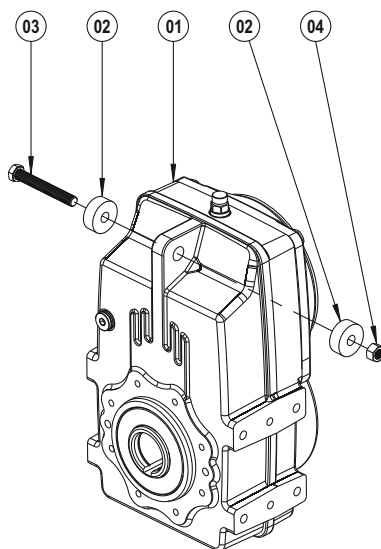
### Accessories

The exploded image may vary depending on the body and motor size, please contact us for the detailed exploded image.



#### B5 Output Flange

- 01 PD Kit
- 02 B5 Output Flange
- 03 Bolt (DIN 933)
- 04 Pin

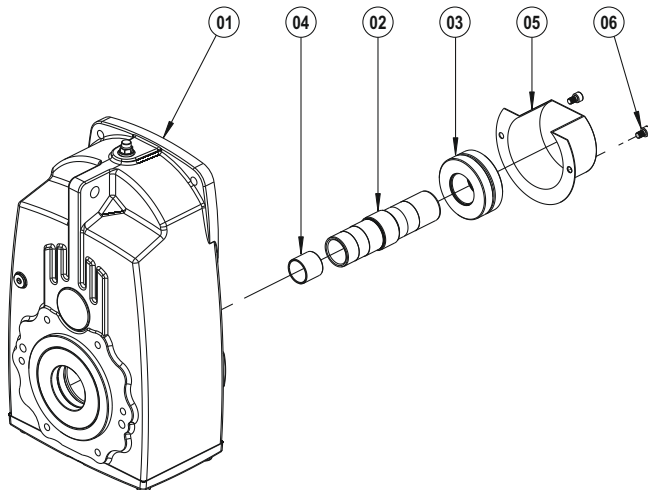


#### Rubber Buffer

- 01 PD Kit
- 02 Rubber Buffer
- 03 Bolt (DIN 933)
- 04 Nut (DIN 934)

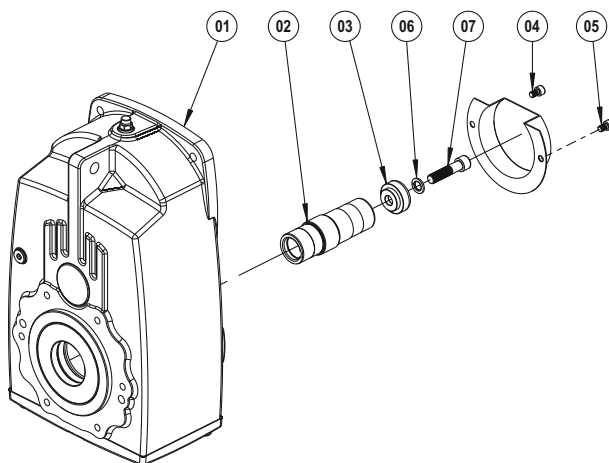
### Accessories

The exploded image may vary depending on the body and motor size, please contact us for the detailed exploded image.



#### Shrink Disk, Protection Cover

- 01 PD Kit
- 02 Shrink Disk Hollow Shaft
- 03 Shrink Disk
- 04 Shrink Disk Bushing
- 05 Shrink Disk Cover
- 06 Bolt (DIN 912)

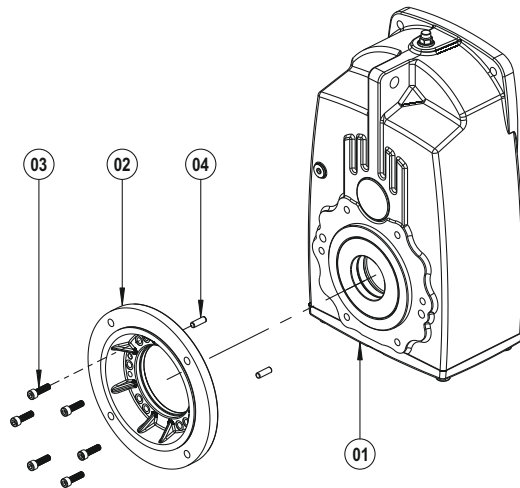


#### Puller, Protection Cover

- 01 PD Kit
- 02 Hollow Shaft
- 03 Puller Washer
- 04 Protection Cover
- 05 Bolt (DIN 912)
- 06 Washer (DIN 127)
- 07 Bolt (DIN 912)

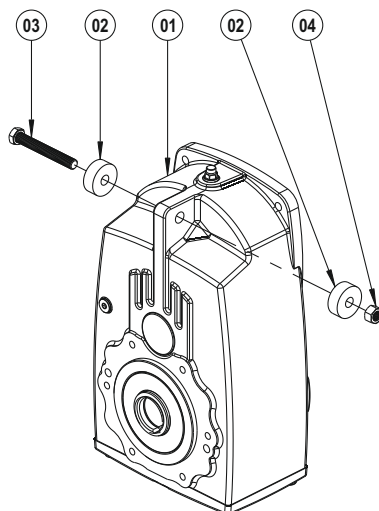
### Accessories

The exploded image may vary depending on the body and motor size, please contact us for the detailed exploded image.



#### B5 Output Flange

- 01 PD Kit
- 02 B5 Output Flange
- 03 Bolt (DIN 933)
- 04 Pin



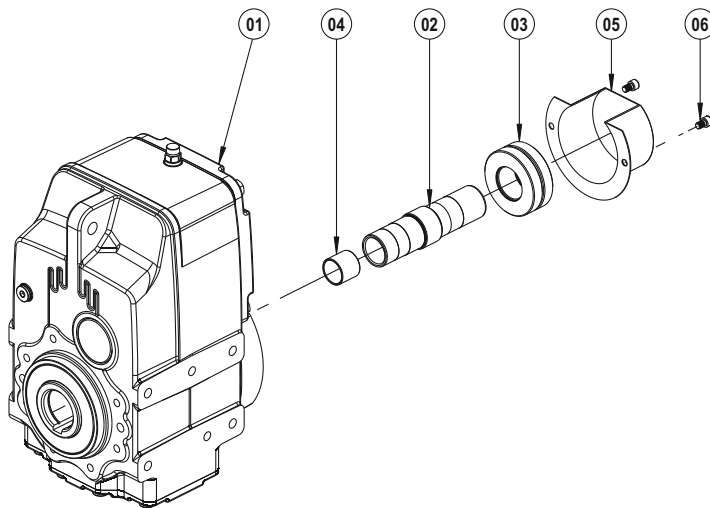
#### Rubber Buffer

- 01 PD Kit
- 02 Rubber Buffer
- 03 Bolt (DIN 933)
- 04 Nut (DIN 934)

## PD / PM C13

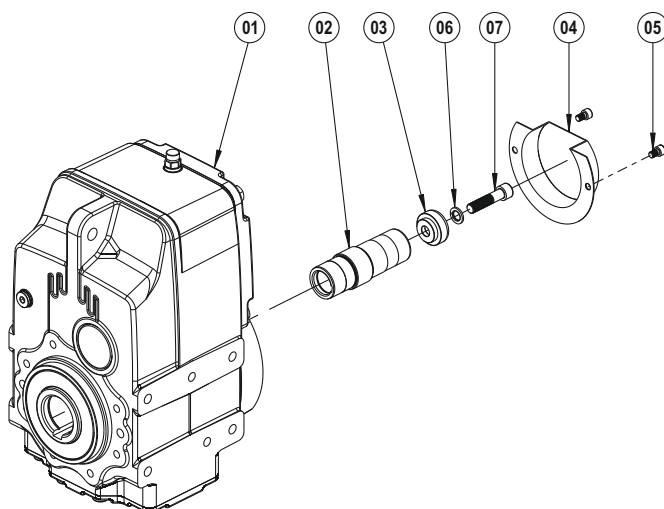
### Accessories

The exploded image may vary depending on the body and motor size, please contact us for the detailed exploded image.



#### Shrink Disk, Protection Cover

- 01 PD Kit
- 02 Shrink Disk Hollow Shaft
- 03 Shrink Disk
- 04 Shrink Disk Bushing
- 05 Shrink Disk Cover
- 06 Bolt (DIN 912)



#### Puller, Protection Cover

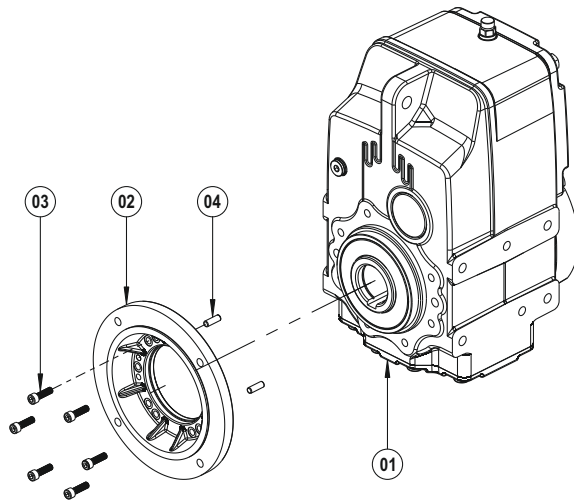
- 01 PD Kit
- 02 Hollow Shaft
- 03 Puller Washer
- 04 Protection Cover
- 05 Bolt (DIN 912)
- 06 Washer (DIN 127)
- 07 Bolt (DIN 912)



## PD / PM C13

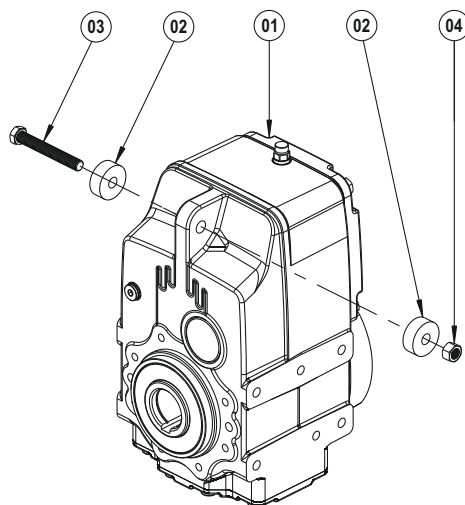
### Accessories

The exploded image may vary depending on the body and motor size, please contact us for the detailed exploded image.



#### B5 Output Flange

- 01 PD Kit
- 02 B5 Output Flange
- 03 Bolt (DIN 933)
- 04 Pin

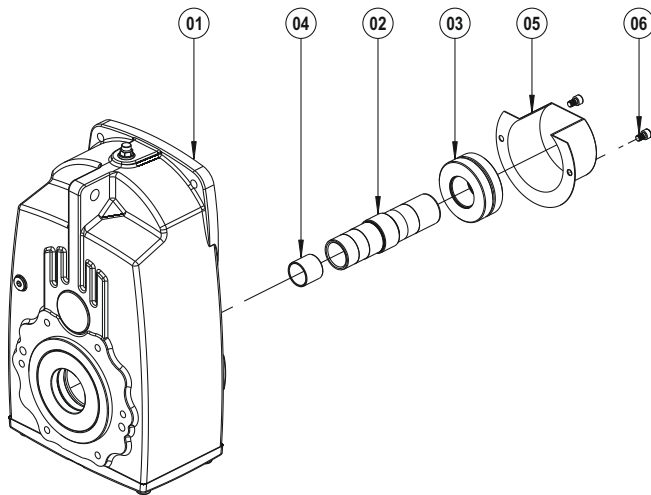


#### Rubber Buffer

- 01 PD Kit
- 02 Rubber Buffer
- 03 Bolt (DIN 933)
- 04 Nut (DIN 934)

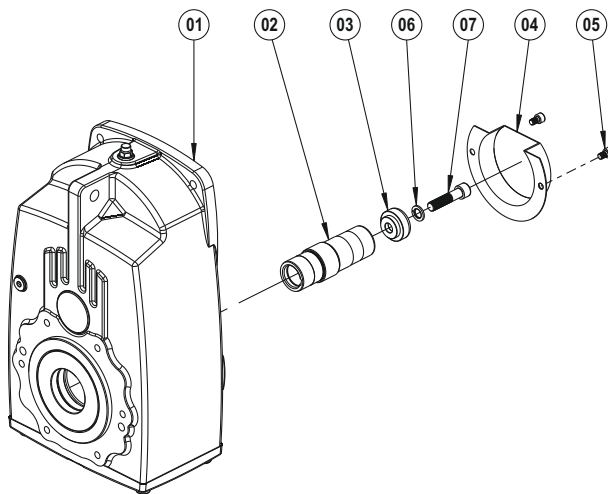
### Accessories

The exploded image may vary depending on the body and motor size, please contact us for the detailed exploded image.



#### Shrink Disk, Protection Cover

- 01 PD Kit
- 02 Shrink Disk Hollow Shaft
- 03 Shrink Disk
- 04 Shrink Disk Bushing
- 05 Shrink Disk Cover
- 06 Bolt (DIN 912)

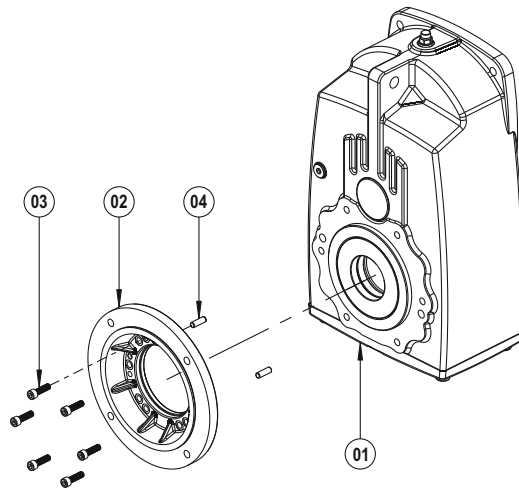


#### Puller, Protection Cover

- 01 PD Kit
- 02 Hollow Shaft
- 03 Puller Washer
- 04 Protection Cover
- 05 Bolt (DIN 912)
- 06 Washer (DIN 127)
- 07 Bolt (DIN 912)

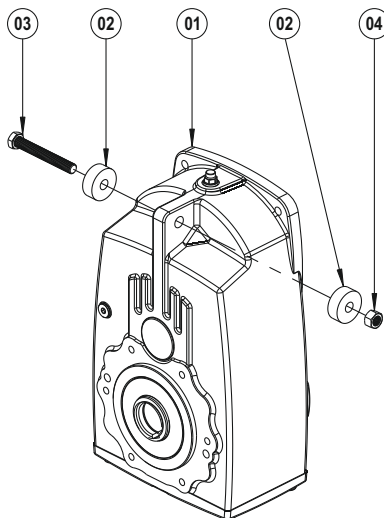
### Accessories

The exploded image may vary depending on the body and motor size, please contact us for the detailed exploded image.



#### B5 Output Flange

- 01 PD Kit
- 02 B5 Output Flange
- 03 Bolt (DIN 933)
- 04 Pin

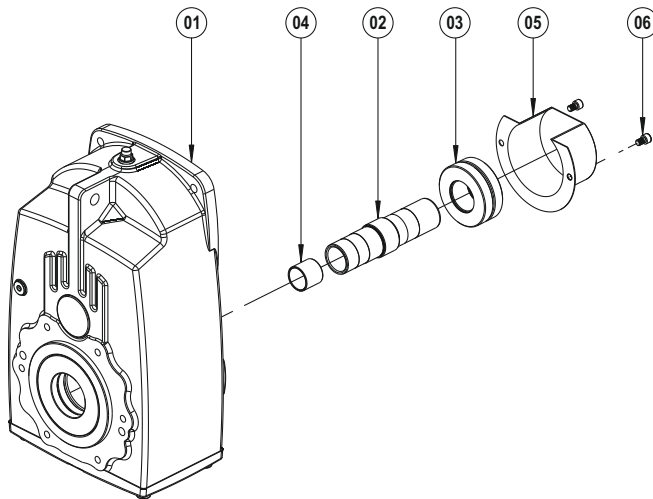


#### Rubber Buffer

- 01 PD Kit
- 02 Rubber Buffer
- 03 Bolt (DIN 933)
- 04 Nut (DIN 934)

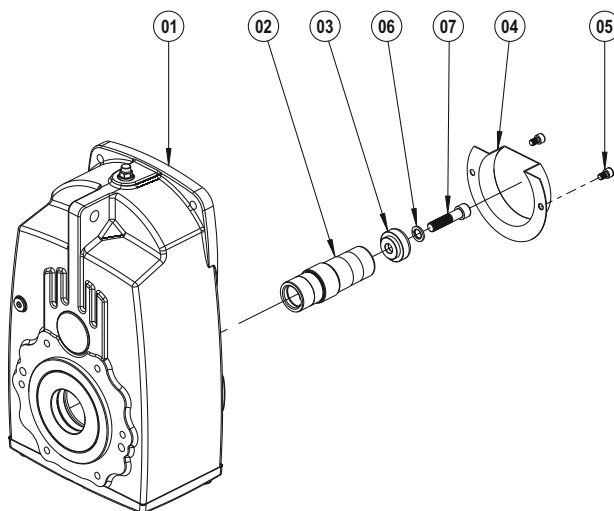
## Accessories

The exploded image may vary depending on the body and motor size, please contact us for the detailed exploded image.



### Shrink Disk, Protection Cover

- 01 PD Kit
- 02 Shrink Disk Hollow Shaft
- 03 Shrink Disk
- 04 Shrink Disk Bushing
- 05 Shrink Disk Cover
- 06 Bolt (DIN 912)

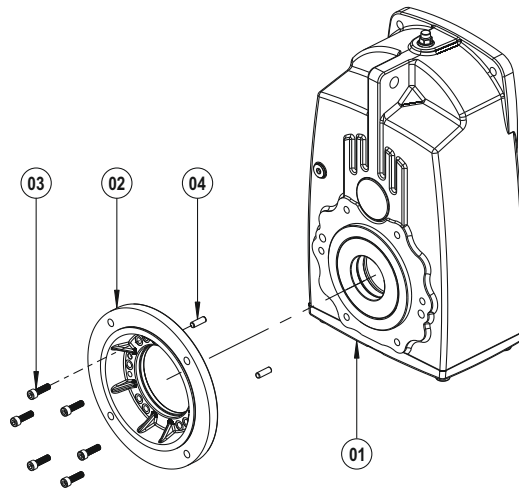


### Puller, Protection Cover

- 01 PD Kit
- 02 Hollow Shaft
- 03 Puller Washer
- 04 Protection Cover
- 05 Bolt (DIN 912)
- 06 Washer (DIN 127)
- 07 Bolt (DIN 912)

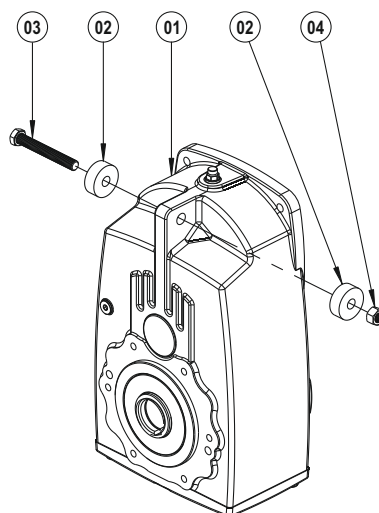
### Accessories

The exploded image may vary depending on the body and motor size, please contact us for the detailed exploded image.



#### B5 Output Flange

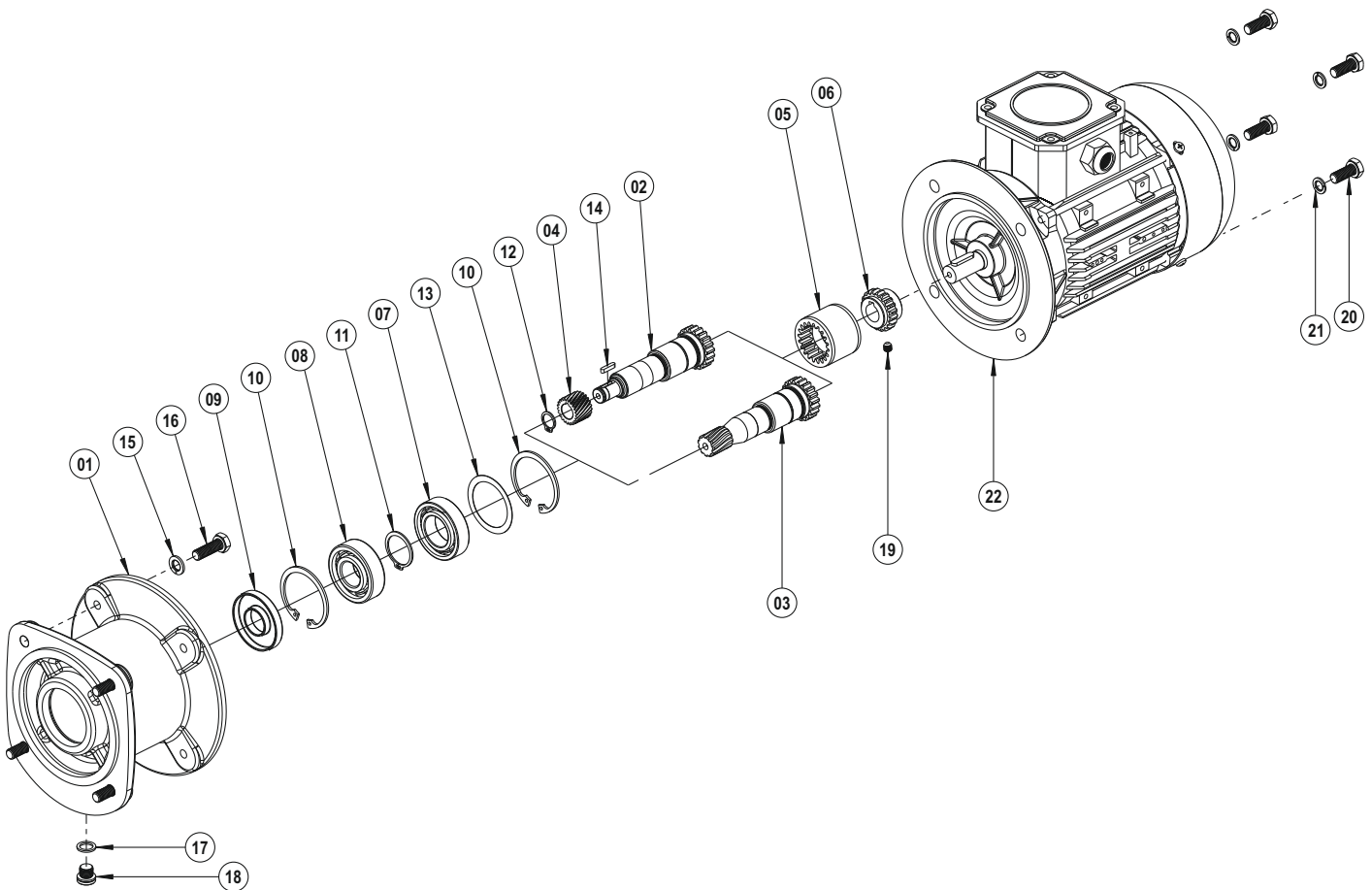
- 01 PD Kit
- 02 B5 Output Flange
- 03 Bolt (DIN 933)
- 04 Pin



#### Rubber Buffer

- 01 PD Kit
- 02 Rubber Buffer
- 03 Bolt (DIN 933)
- 04 Nut (DIN 934)

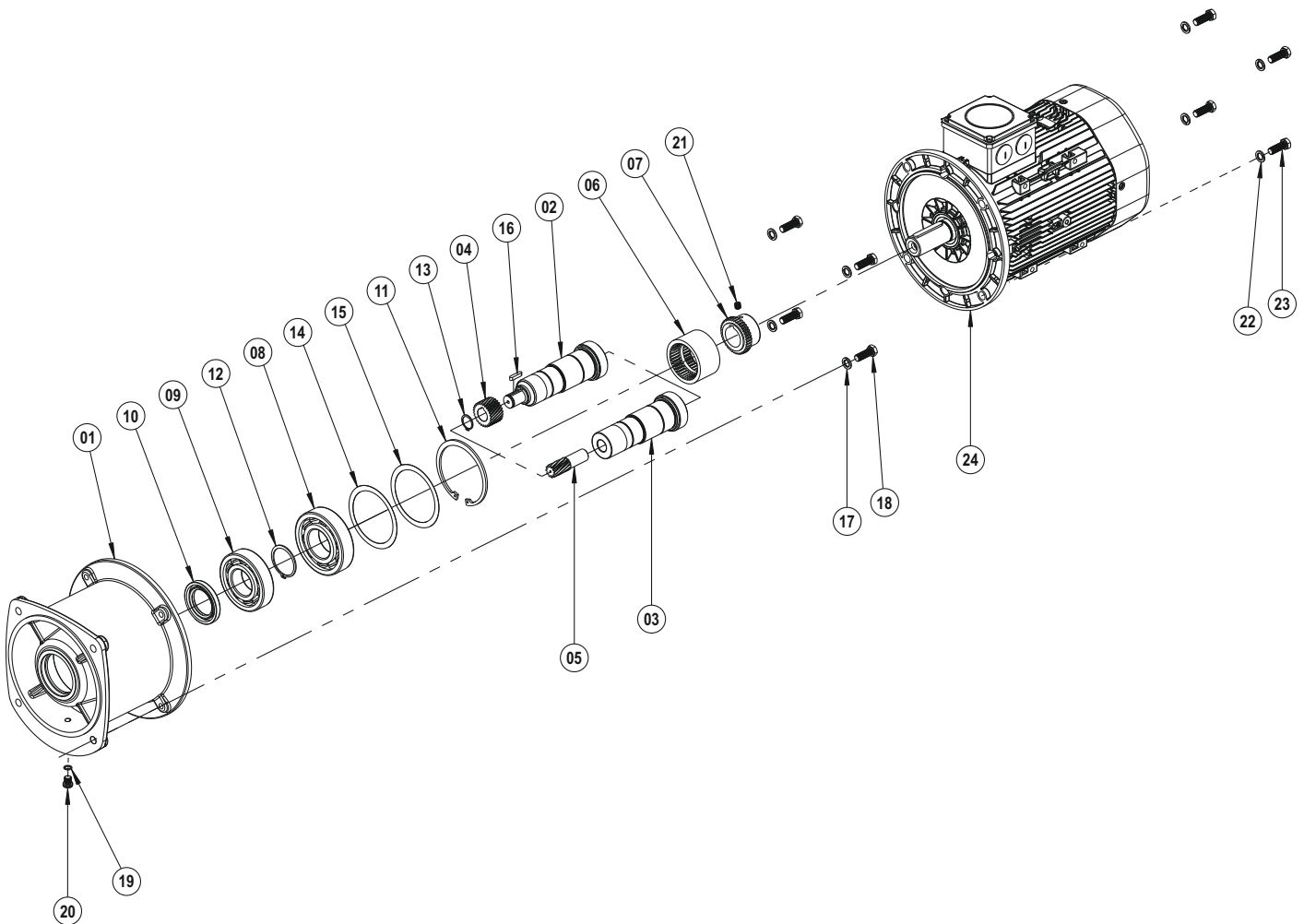
The exploded image may vary depending on the body and motor size, please contact us for the detailed exploded image.



- 01 Gear Case
- 02 IEC Shaft (With Key)
- 03 IEC Shaft (With Gear)
- 04 Driving Pinion (With Key)
- 05 Plastic Coupling
- 06 Metal Coupling
- 07 Bearing
- 08 Bearing
- 09 Oil Seal
- 10 Circlip (DIN 472)
- 11 Circlip (DIN 471)
- 12 Circlip (DIN 471)
- 13 Shim (DIN 988)
- 14 Key (DIN 6885)
- 15 Washer (DIN 127)
- 16 Bolt (DIN 933)
- 17 Washer (DIN 7603)
- 18 Oil Plug (DIN 908)
- 19 Bolt (DIN 916)
- 20 Bolt (DIN 933)
- 21 Washer (DIN 127)
- 22 Motor

## IEC 132 ... 180

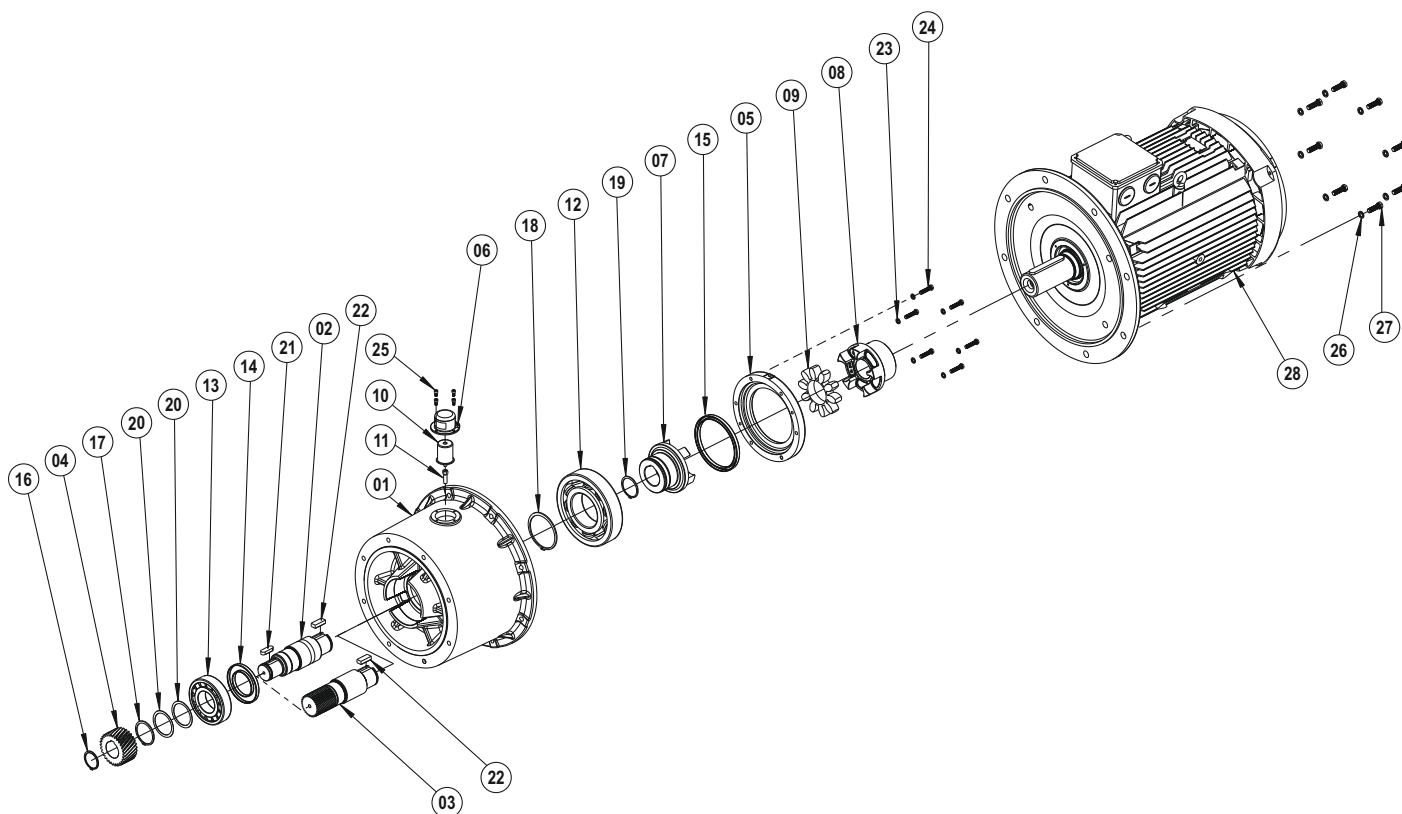
The exploded image may vary depending on the body and motor size, please contact us for the detailed exploded image.



- 01 Gear Case
- 02 IEC Shaft (With Key)
- 03 IEC Shaft
- 04 Driving Pinion (With Key)
- 05 Driving Pinion
- 06 Plastic Coupling
- 07 Metal Coupling
- 08 Bearing
- 09 Bearing
- 10 Oil Seal
- 11 Circlip (DIN 472)
- 12 Circlip (DIN 471)
- 13 Circlip (DIN 471)
- 14 Shim (DIN 988)
- 15 Shim (DIN 988)
- 16 Key (DIN 6885)
- 17 Washer (DIN 127)
- 18 Bolt (DIN 933)
- 19 Washer (DIN 7603)
- 20 Oil Plug (DIN 908)
- 21 Bolt (DIN 916)
- 22 Washer (DIN 127)
- 23 Bolt (DIN 933)
- 24 Motor

## IEC 160 ... 315

The exploded image may vary depending on the body and motor size, please contact us for the detailed exploded image.

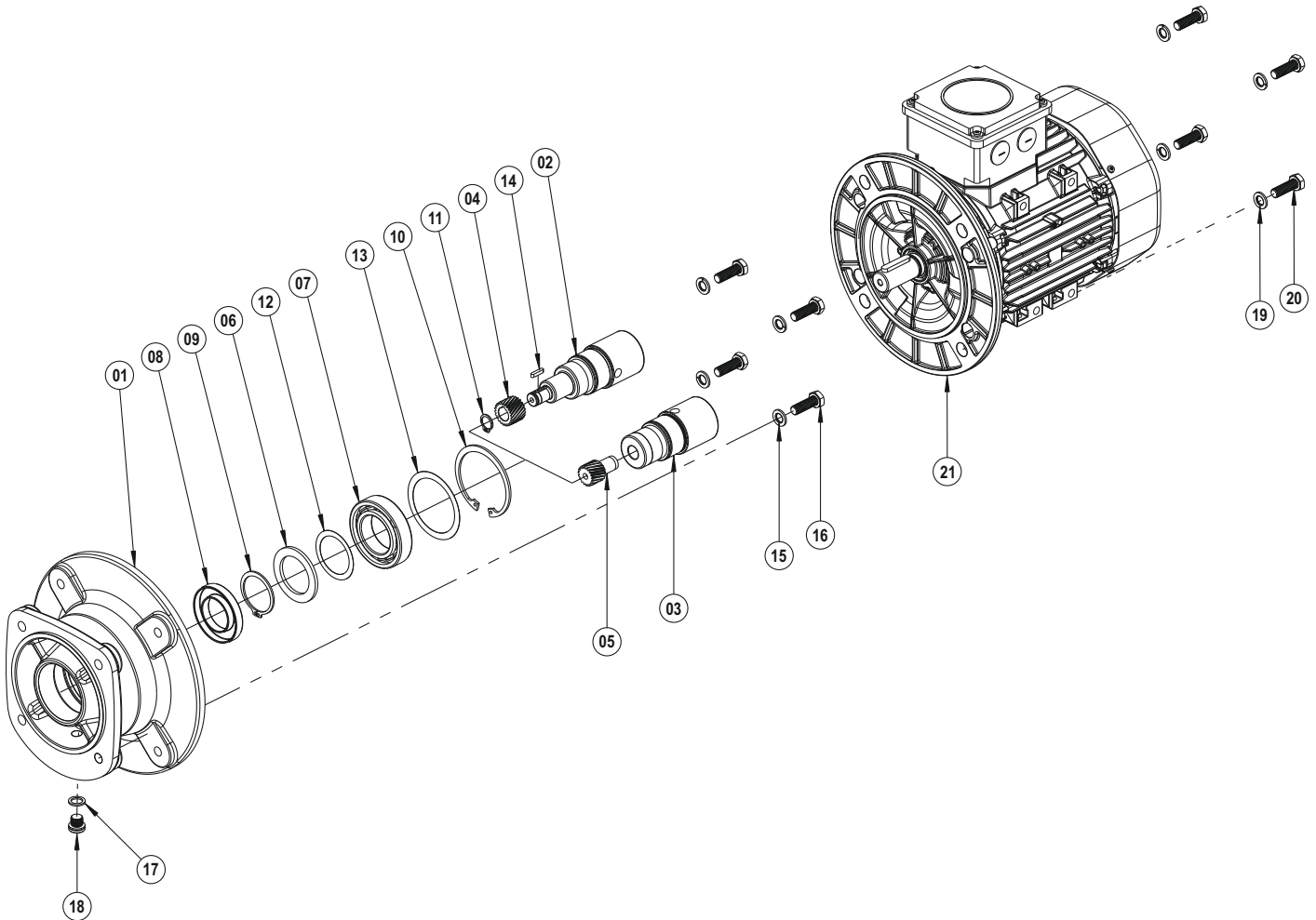


- 01 Gear Case
- 02 IEC Shaft (With Key)
- 03 IEC Shaft (With Gear)
- 04 Driving Pinion (With Key)
- 05 Bearing Flange
- 06 Lubrication Cover
- 07 Coupling (Gearbox Side)
- 08 Coupling (Motor Side)
- 09 Spider
- 10 Automatic Lubricator
- 11 Automatic Lubricator Adapter
- 12 Bearing
- 13 Bearing
- 14 Oil Seal
- 15 Oil Seal
- 16 Circlip (DIN 471)
- 17 Circlip (DIN 471)
- 18 Circlip (DIN 471)
- 19 Circlip (DIN 471)
- 20 Shim (DIN 988)
- 21 Key (DIN 6885)
- 22 Key (DIN 6885)
- 23 Washer (DIN 127)
- 24 Bolt (DIN 933)
- 25 Bolt (DIN 912)
- 26 Washer (DIN 127)
- 27 Bolt (DIN 933)
- 28 Motor



## PAM B5 / 63 ... 315

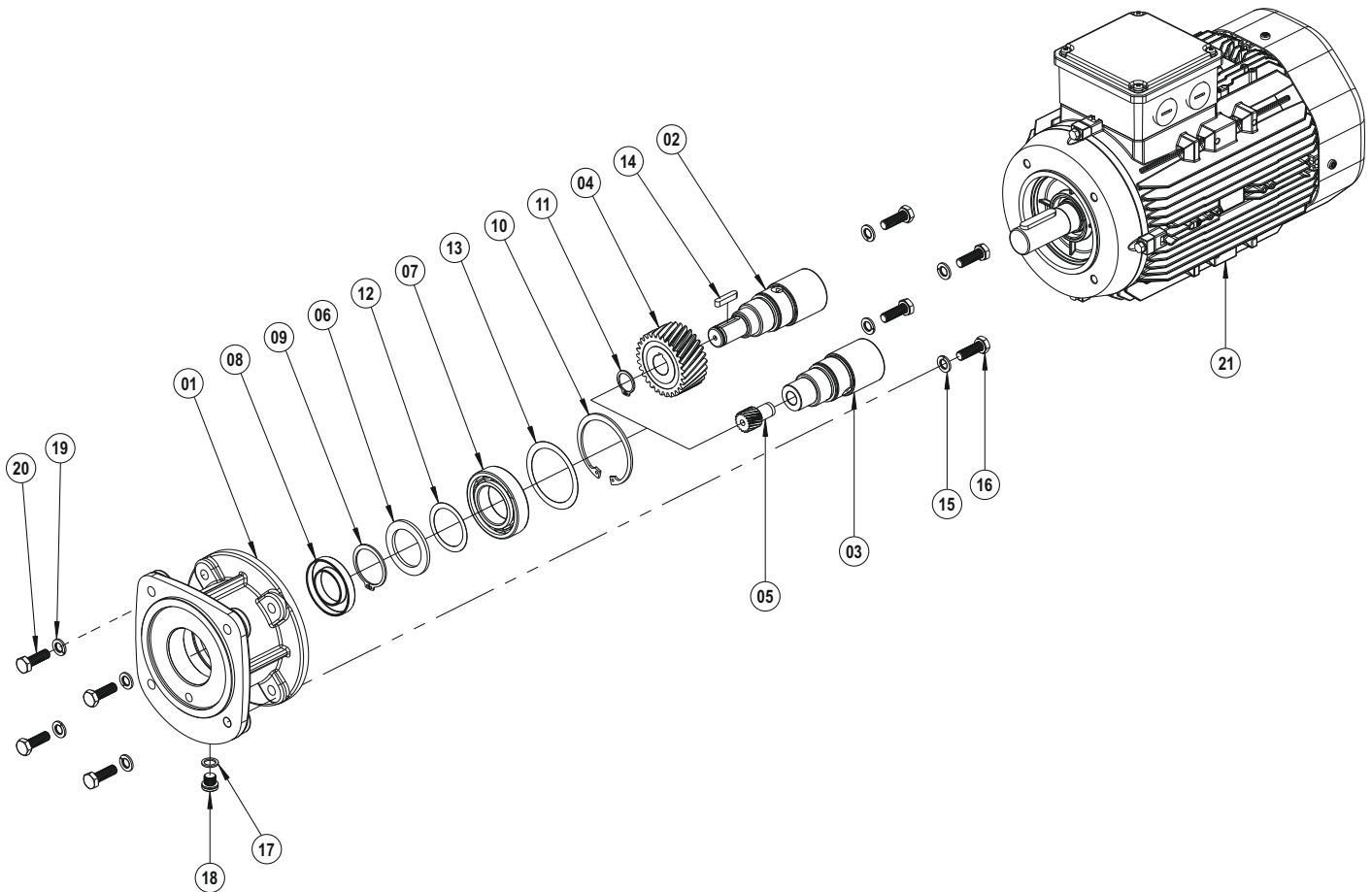
The exploded image may vary depending on the body and motor size, please contact us for the detailed exploded image.



- 01 Gear Case
- 02 PAM Shaft (With Key)
- 03 PAM Shaft
- 04 Driving Pinion (With Key)
- 05 Driving Pinion
- 06 Washer
- 07 Bearing
- 08 Oil Seal
- 09 Circlip (DIN 471)
- 10 Circlip (DIN 472)
- 11 Circlip (DIN 471)
- 12 Shim (DIN 988)
- 13 Shim (DIN 988)
- 14 Key (DIN 6885)
- 15 Washer (DIN 127)
- 16 Bolt (DIN 933)
- 17 Washer (DIN 7603)
- 18 Oil Plug (DIN 908)
- 19 Washer (DIN 127)
- 20 Bolt (DIN 933)
- 21 Motor

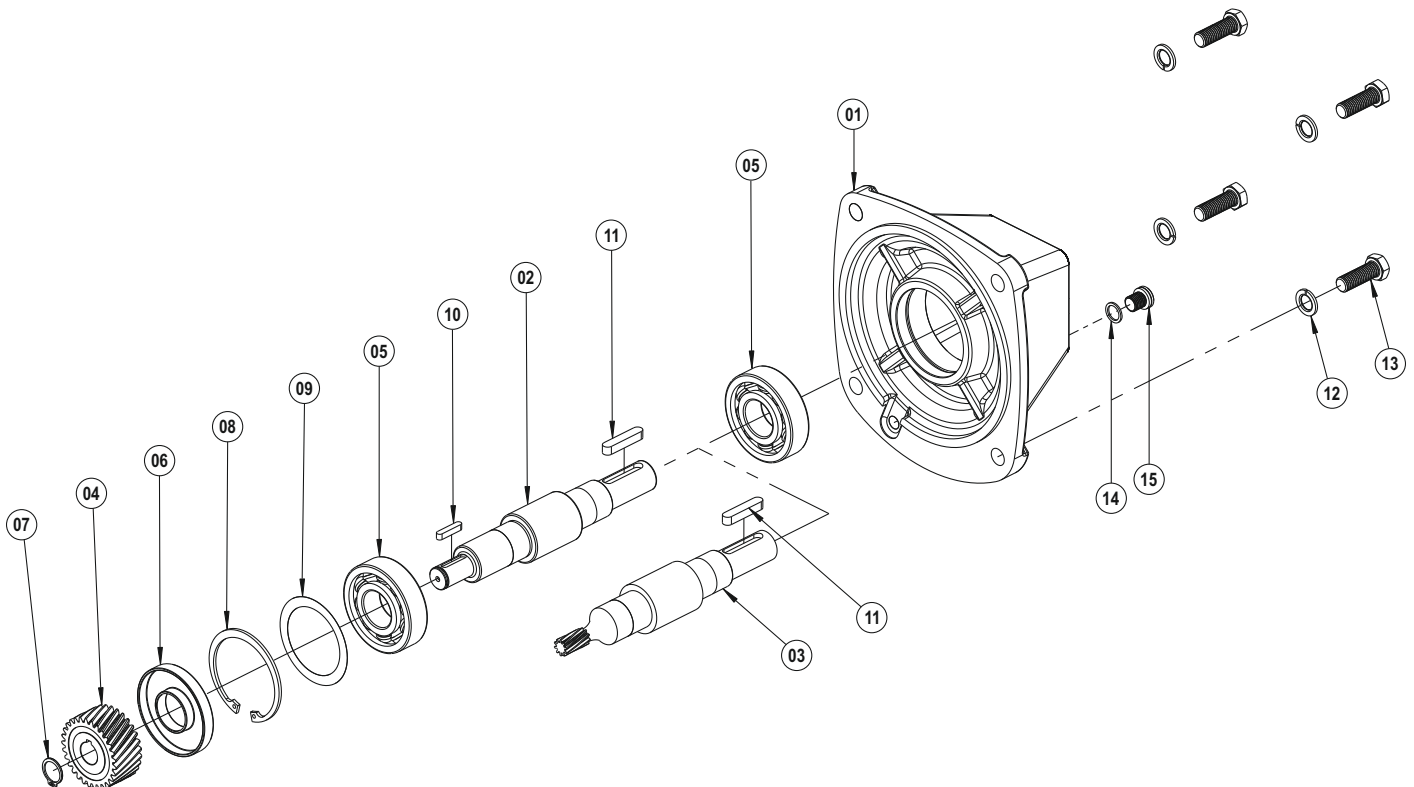
## PAM B14 / 63 ... 132

The exploded image may vary depending on the body and motor size, please contact us for the detailed exploded image.



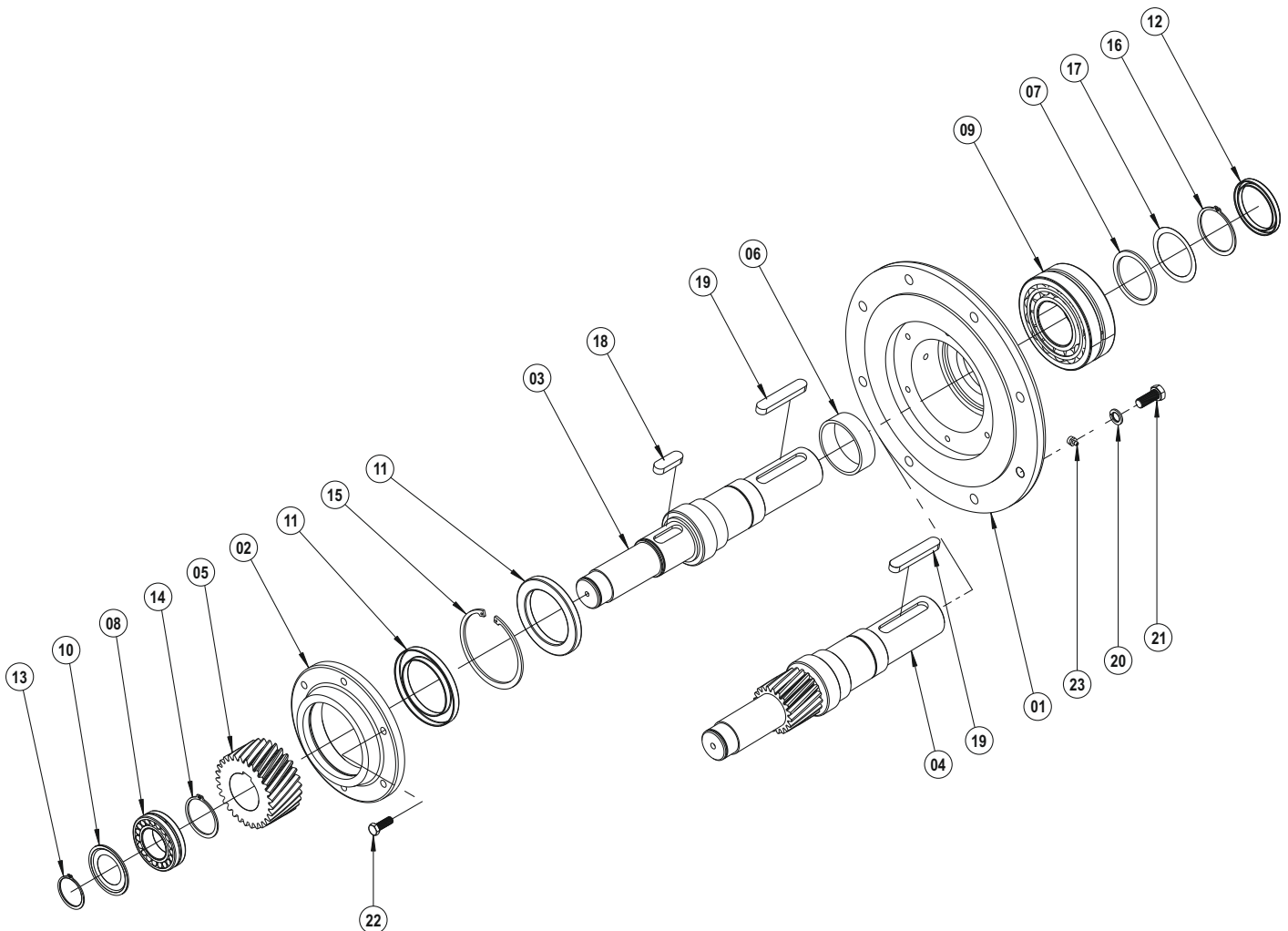
- 01 Gear Case
- 02 PAM Shaft (With Key)
- 03 PAM Shaft
- 04 Driving Pinion (With Key)
- 05 Driving Pinion
- 06 Washer
- 07 Bearing
- 08 Oil Seal
- 09 Circlip (DIN 471)
- 10 Circlip (DIN 472)
- 11 Circlip (DIN 471)
- 12 Shim (DIN 988)
- 13 Shim (DIN 988)
- 14 Key (DIN 6885)
- 15 Washer (DIN 127)
- 16 Bolt (DIN 933)
- 17 Washer (DIN 7603)
- 18 Oil Plug (DIN 908)
- 19 Washer (DIN 127)
- 20 Bolt (DIN 933)
- 21 Motor

The exploded image may vary depending on the body and motor size, please contact us for the detailed exploded image.



- 01 Gear Case
- 02 W Shaft (With Key)
- 03 W Shaft (With Gear)
- 04 Driving Pinion (With Key)
- 05 Bearing
- 06 Oil Seal
- 07 Circlip (DIN 471)
- 08 Circlip (DIN 472)
- 09 Shim (DIN 988)
- 10 Key (DIN 6885)
- 11 Key (DIN 6885)
- 12 Washer (DIN 127)
- 13 Bolt (DIN 933)
- 14 Washer (DIN 7603)
- 15 Oil Plug (DIN 908)

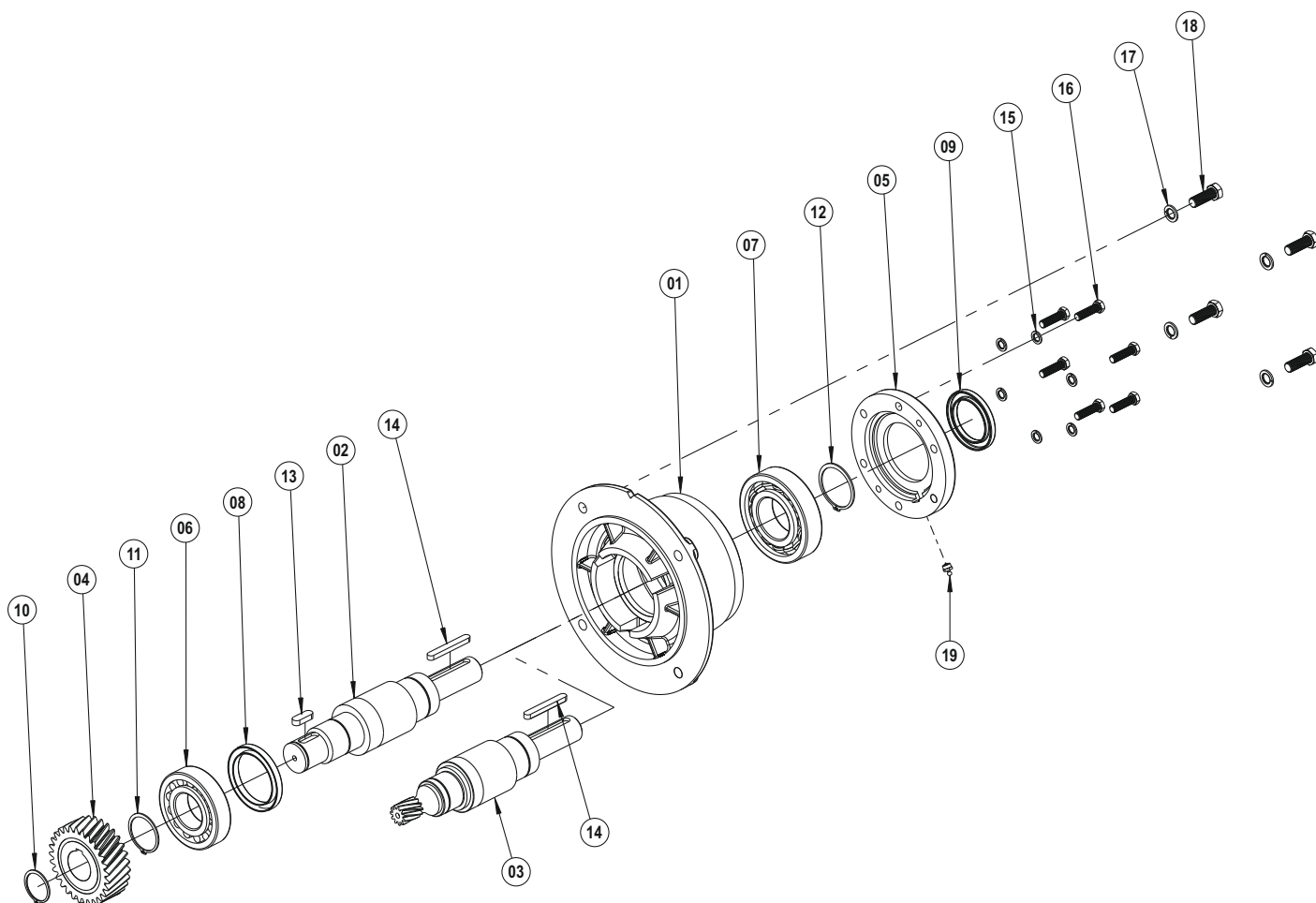
The exploded image may vary depending on the body and motor size, please contact us for the detailed exploded image.



- 01 Gear Case
- 02 Bearing Cover
- 03 W Shaft (With Key)
- 04 W Shaft (With Gear)
- 05 Driving Pinion (With Key)
- 06 Spacer
- 07 Washer
- 08 Bearing
- 09 Bearing
- 10 Nilos-Ring
- 11 Oil Seal
- 12 Oil Seal
- 13 Circlip (DIN 471)
- 14 Circlip (DIN 471)
- 15 Circlip (DIN 472)
- 16 Circlip (DIN 471)
- 17 Shim (DIN 988)
- 18 Key (DIN 6885)
- 19 Key (DIN 6885)
- 20 Washer (DIN 127)
- 21 Bolt (DIN 933)
- 22 Bolt (DIN 933)
- 23 Grease Nipple

## W 288

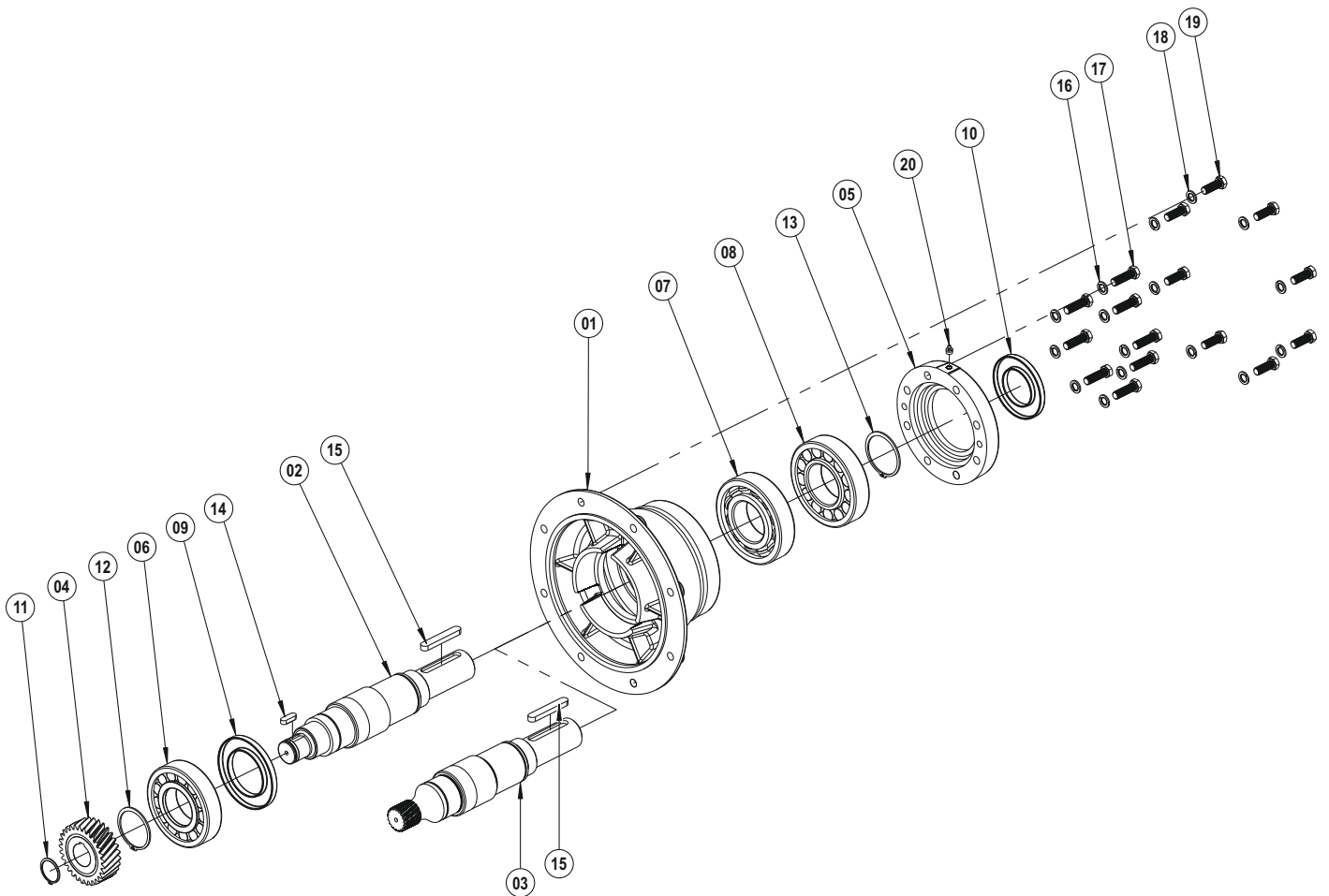
The exploded image may vary depending on the body and motor size, please contact us for the detailed exploded image.



- 01 Gear Case
- 02 W Shaft (With Key)
- 03 W Shaft (With Gear)
- 04 Driving Pinion (With Key)
- 05 Bearing Flange
- 06 Bearing
- 07 Bearing
- 08 Oil Seal
- 09 Oil Seal
- 10 Circlip (DIN 471)
- 11 Circlip (DIN 471)
- 12 Circlip (DIN 471)
- 13 Key (DIN 6885)
- 14 Key (DIN 6885)
- 15 Washer (DIN 127)
- 16 Bolt (DIN 933)
- 17 Washer (DIN 127)
- 18 Bolt (DIN 933)
- 19 Grease Nipple

## W 397

The exploded image may vary depending on the body and motor size, please contact us for the detailed exploded image.



- 01 Gear Case
- 02 W Shaft (With Key)
- 03 W Shaft (With Gear)
- 04 Driving Pinion (With Key)
- 05 Bearing Flange
- 06 Bearing
- 07 Bearing
- 08 Bearing
- 09 Oil Seal
- 10 Oil Seal
- 11 Circlip (DIN 471)
- 12 Circlip (DIN 471)
- 13 Circlip (DIN 471)
- 14 Key (DIN 6885)
- 15 Key (DIN 6885)
- 16 Washer (DIN 127)
- 17 Bolt (DIN 933)
- 18 Washer (DIN 127)
- 19 Bolt (DIN 933)
- 20 Grease Nipple

Handwriting practice lines consisting of 30 horizontal dotted lines.



- Ata OSB Mah. Astim 1. Cad. No: 4, Pk 105 Efeler / Aydın / TÜRKİYE
- T: +90 256 231 19 12 - 16 (pbx)
- F: +90 256 231 19 17
- info@pgr.com.tr - satissonrasi@pgr.com.tr
- www.pgr.com.tr