

www.pgr.com.tr

**PGR<sup>®</sup>**  
DRIVE TECHNOLOGIES

| EN |

# GENERAL PART LIST

# PKD | SERIES

## Helical Bevel Gear Units

We reserve the right to our company to make changes or  
modifications to catalogue without prior notice.

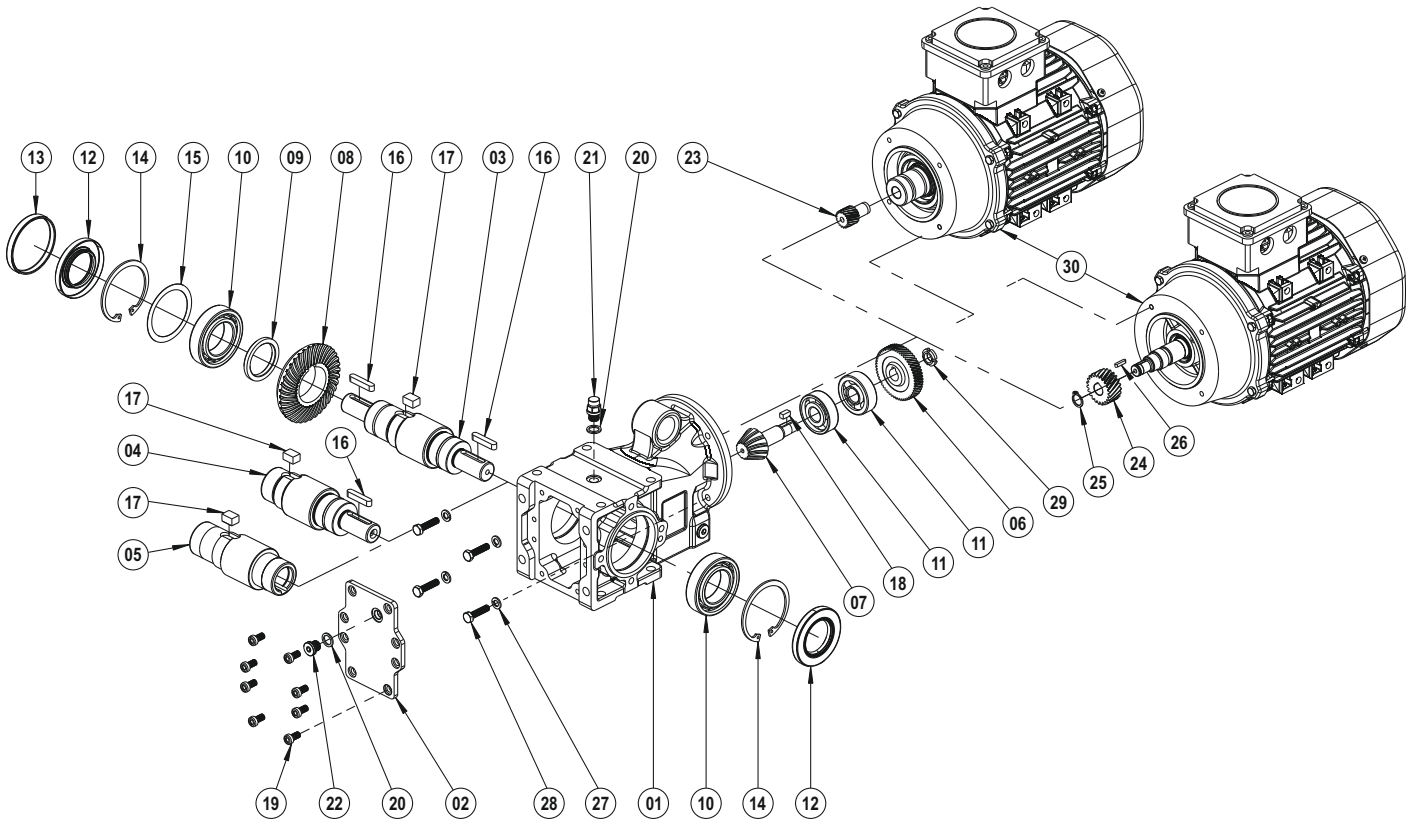


Handwriting practice lines consisting of 30 horizontal dotted lines.



**DA - TMA - ÇMA - DG - TMG**

The exploded image may vary depending on the body and motor size, please contact us for the detailed exploded image.

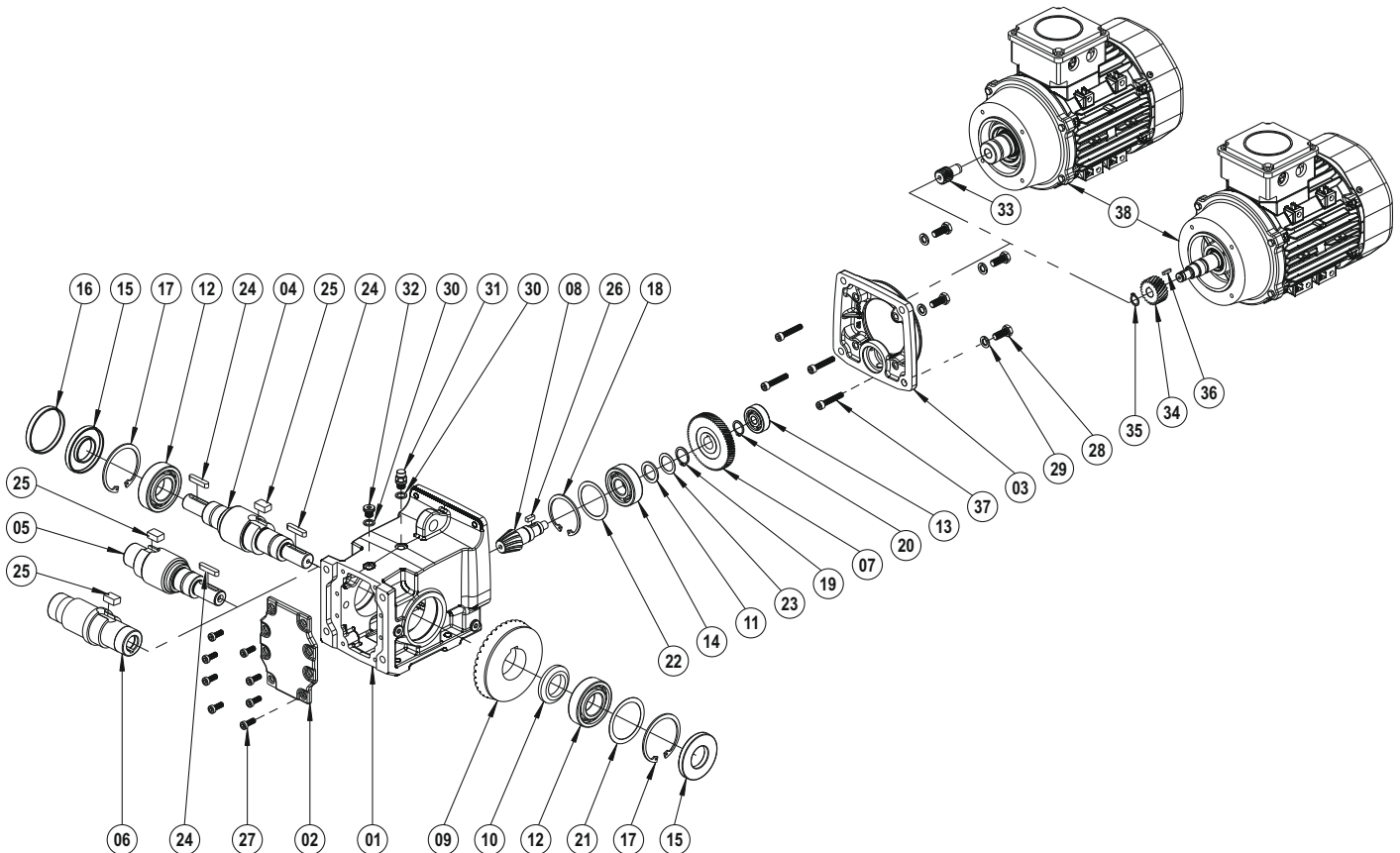


- 01 Gear Case
- 02 Cover
- 03 Output Solid Shaft
- 04 Output Solid Shaft
- 05 Hollow Shaft
- 06 Driving Gear
- 07 Pinion Shaft
- 08 Driven Gear
- 09 Spacer
- 10 Bearing
- 11 Bearing
- 12 Oil Seal
- 13 Oil Cover
- 14 Circlip (DIN 472)
- 15 Shim
- 16 Key (DIN 6885)
- 17 Key (DIN 6885)
- 18 Key (DIN 6885)
- 19 Bolt (DIN 912)
- 20 Washer (DIN 7603)
- 21 Vent Plug
- 22 Oil Plug (DIN 908)
- 23 Driving Pinion
- 24 Driving Pinion (With Key)
- 25 Circlip (DIN 471)
- 26 Key (DIN 6885)
- 27 Washer (DIN 127)
- 28 Bolt (DIN 933)
- 29 Nut (DIN 981)
- 30 Motor

**PKD B 0290 ... H 5290**

**DA - TMA - ÇMA - DG - TMG**

The exploded image may vary depending on the body and motor size, please contact us for the detailed exploded image.

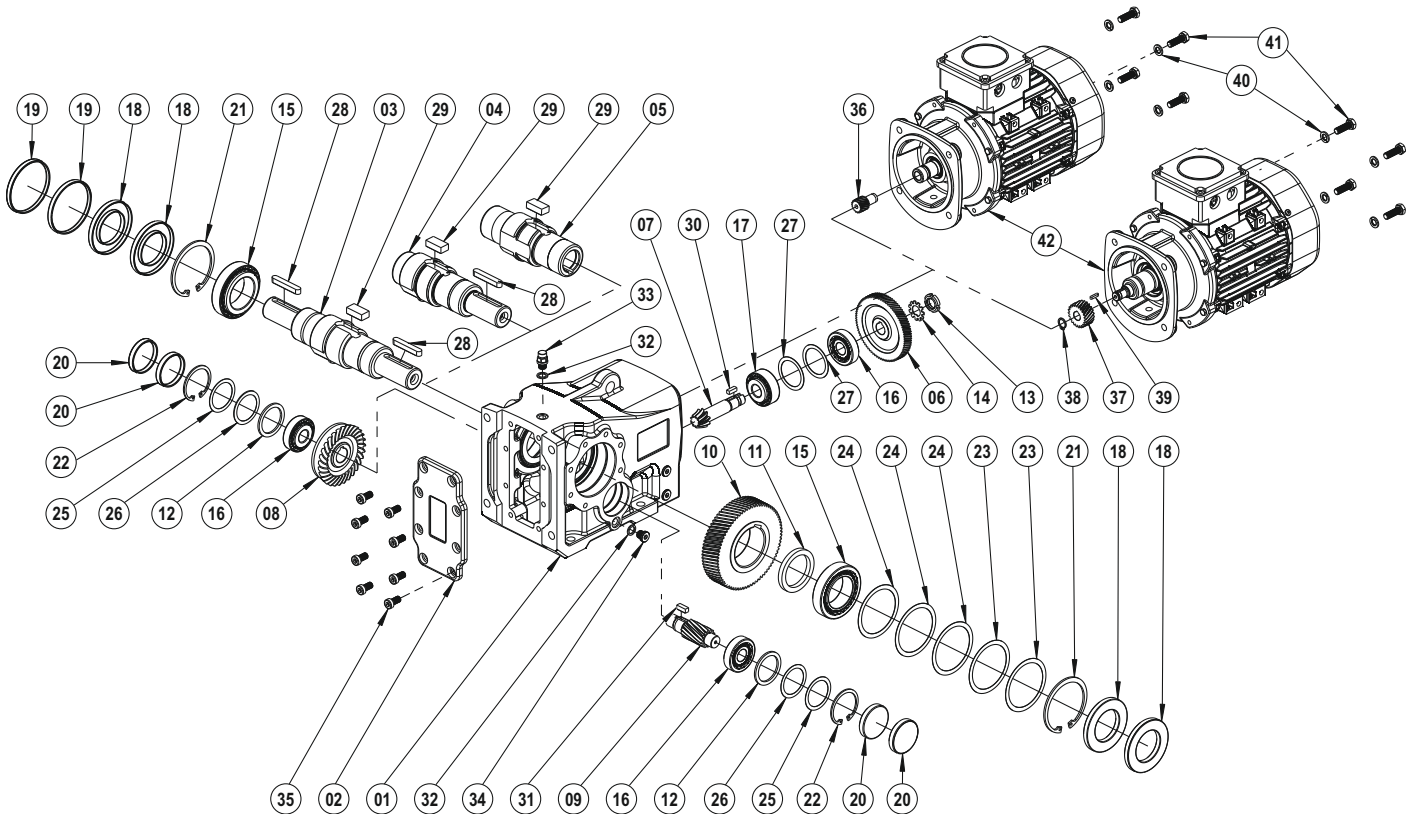


- |                        |                              |
|------------------------|------------------------------|
| 01 Gear Case           | 20 Circlip (DIN 471)         |
| 02 Cover               | 21 Shim (DIN 988)            |
| 03 Intermediate Flange | 22 Shim (DIN 988)            |
| 04 Output Solid Shaft  | 23 Shim (DIN 988)            |
| 05 Output Solid Shaft  | 24 Key (DIN 6885)            |
| 06 Hollow Shaft        | 25 Key (DIN 6885)            |
| 07 Driving Gear        | 26 Key (DIN 6885)            |
| 08 Pinion Shaft        | 27 Bolt (DIN 912)            |
| 09 Driven Gear         | 28 Bolt (DIN 933)            |
| 10 Spacer              | 29 Washer (DIN 127)          |
| 11 Washer              | 30 Washer (DIN 7603)         |
| 12 Bearing             | 31 Vent Plug                 |
| 13 Bearing             | 32 Oil Plug (DIN 908)        |
| 14 Bearing             | 33 Driving Pinion            |
| 15 Oil Seal            | 34 Driving Pinion (With Key) |
| 16 Oil Cover           | 35 Circlip (DIN 471)         |
| 17 Circlip (DIN 472)   | 36 Key (DIN 6885)            |
| 18 Circlip (DIN 472)   | 37 Bolt (DIN 912)            |
| 19 Circlip (DIN 471)   | 38 Motor                     |

**PKD 1390 ... G 9390**

**DA - TMA - ÇMA - DG - TMG**

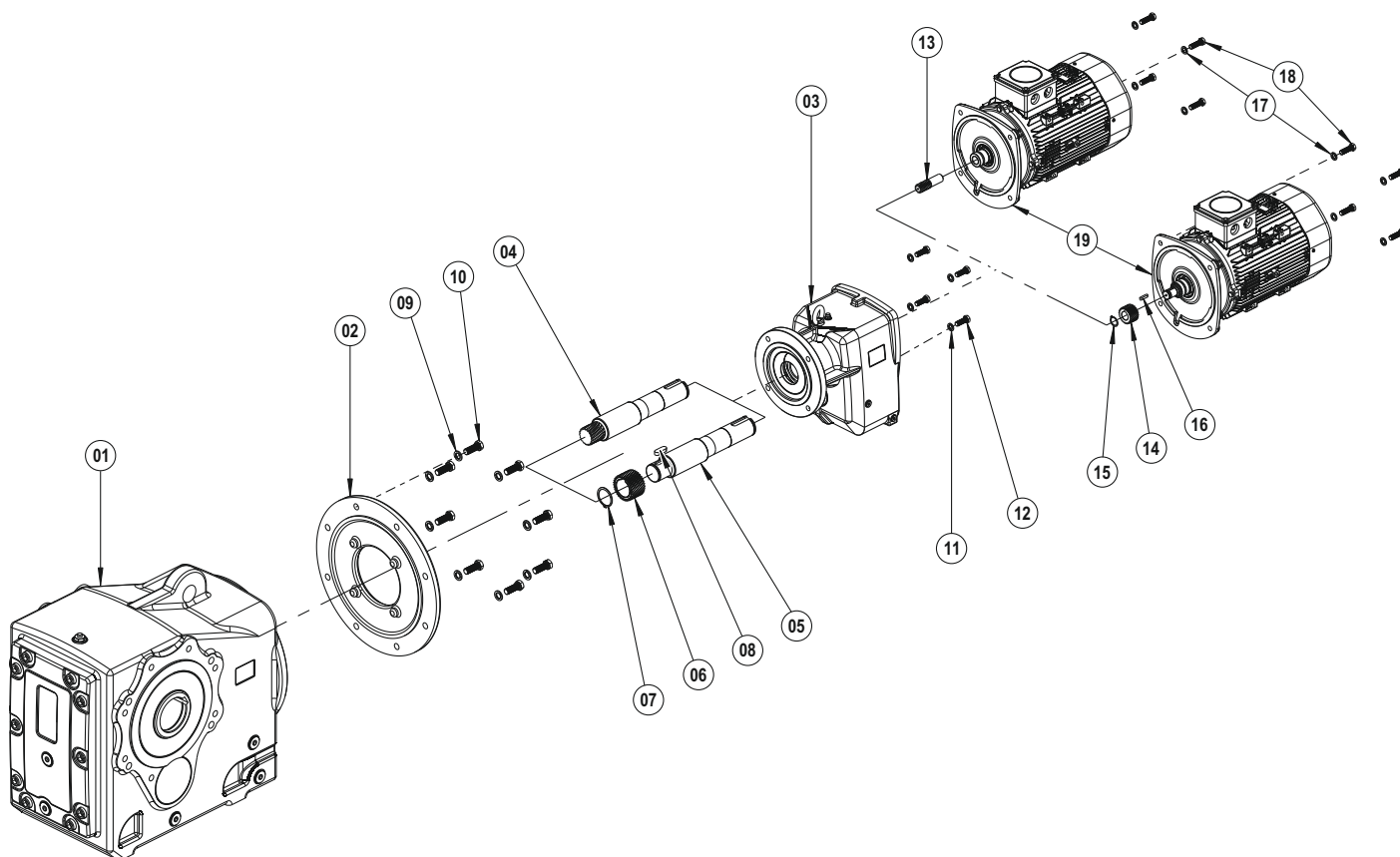
The exploded image may vary depending on the body and motor size, please contact us for the detailed exploded image.



- |                       |                              |
|-----------------------|------------------------------|
| 01 Gear Case          | 22 Circlip (DIN 472)         |
| 02 Cover              | 23 Shim (DIN 988)            |
| 03 Output Solid Shaft | 24 Shim (DIN 988)            |
| 04 Output Solid Shaft | 25 Shim (DIN 988)            |
| 05 Hollow Shaft       | 26 Shim (DIN 988)            |
| 06 Driving Gear       | 27 Shim (DIN 988)            |
| 07 Pinion Shaft       | 28 Key (DIN 6885)            |
| 08 Driven Gear        | 29 Key (DIN 6885)            |
| 09 Pinion Shaft       | 30 Key (DIN 6885)            |
| 10 Driven Gear        | 31 Key (DIN 6885)            |
| 11 Spacer             | 32 Washer (DIN 7603)         |
| 12 Washer             | 33 Vent Plug                 |
| 13 Nut (DIN 981)      | 34 Oil Plug (DIN 908)        |
| 14 Washer (DIN 5406)  | 35 Bolt (DIN 912)            |
| 15 Bearing            | 36 Driving Pinion            |
| 16 Bearing            | 37 Driving Pinion (With Key) |
| 17 Bearing            | 38 Circlip (DIN 471)         |
| 18 Oil Seal           | 39 Key (DIN 6885)            |
| 19 Oil Cover          | 40 Washer (DIN 127)          |
| 20 Oil Cover          | 41 Bolt (DIN 933)            |
| 21 Circlip (DIN 472)  | 42 Motor                     |

## PKD 6390/32 ... G 9390/63

The exploded image may vary depending on the body and motor size, please contact us for the detailed exploded image.

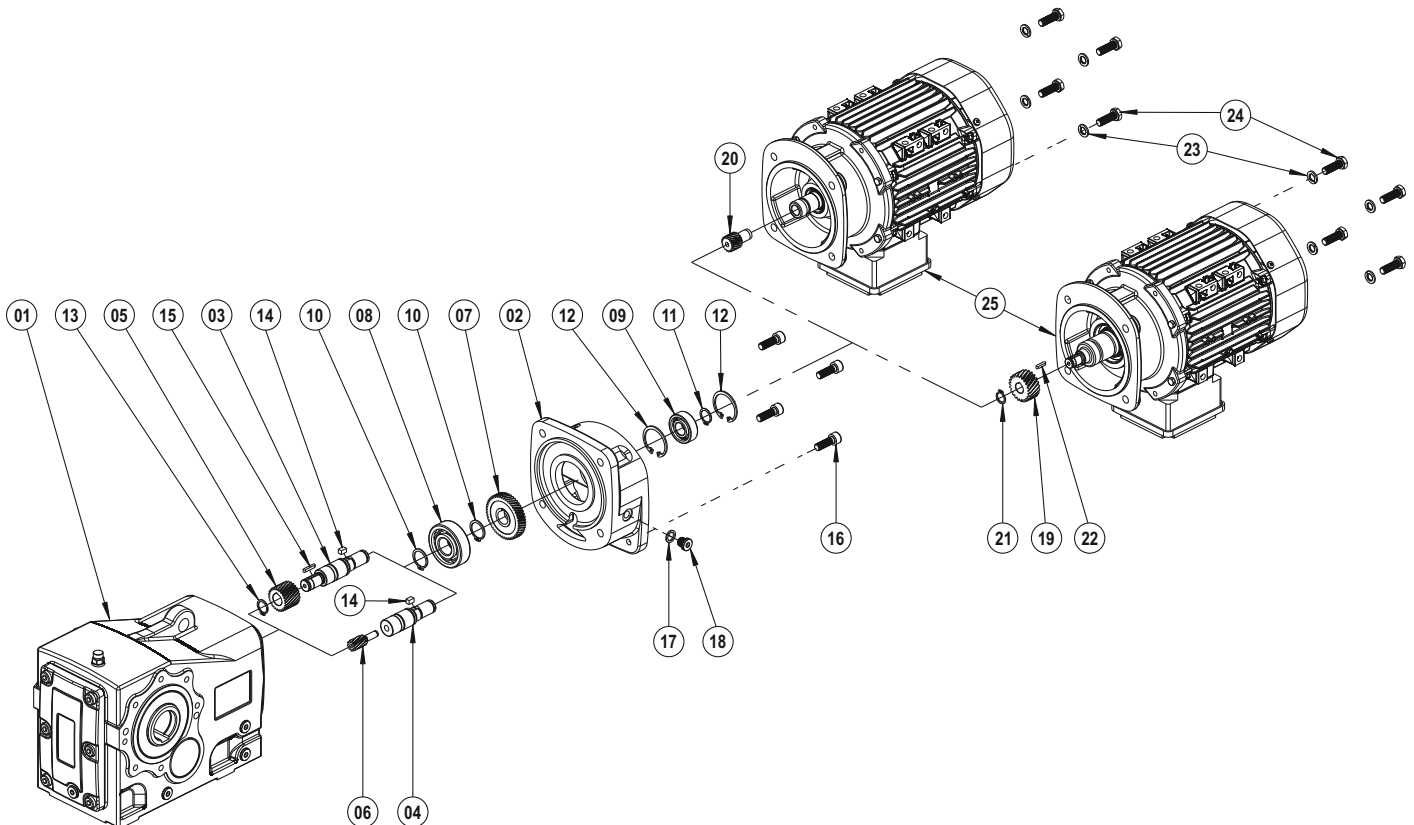


- 01 PKD Kit
- 02 Intermediate Flange
- 03 PF Kit
- 04 Intermediate Shaft (With Gear)
- 05 Intermediate Shaft (With Key)
- 06 Intermediate Gear (With Key)
- 07 Circlip (DIN 471)
- 08 Key (DIN 6885)
- 09 Washer (DIN 127)
- 10 Bolt (DIN 933)
- 11 Washer (DIN 127)
- 12 Bolt (DIN 933)
- 13 Driving Pinion
- 14 Driving Pinion (With Key)
- 15 Circlip (DIN 471)
- 16 Key (DIN 6885)
- 17 Washer (DIN 127)
- 18 Bolt (DIN 933)
- 19 Motor

## PKD 1390 ... G 9390

### Reduction Gear Case

The exploded image may vary depending on the body and motor size, please contact us for the detailed exploded image.

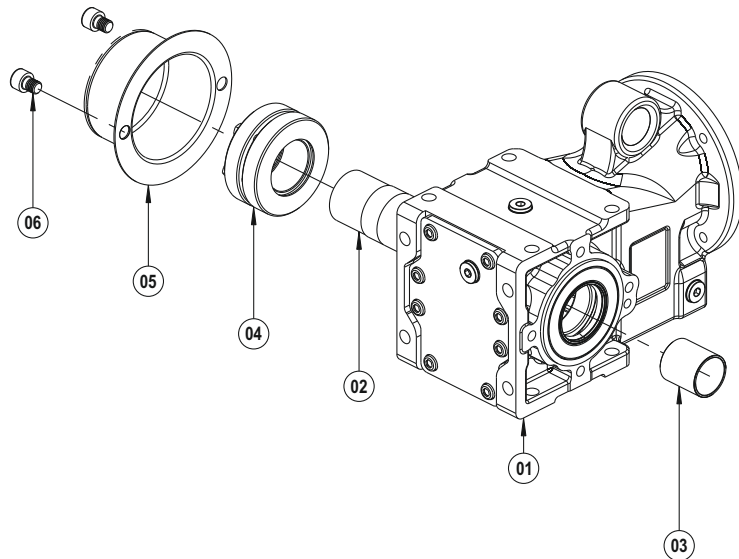


- 01 PKD Kit
- 02 Reduction Gear Case
- 03 Intermediate Shaft (With Key)
- 04 Intermediate Shaft
- 05 Intermediate Gear (With Key)
- 06 Intermediate Gear
- 07 Driving Gear
- 08 Bearing
- 09 Bearing
- 10 Circlip (DIN 471)
- 11 Circlip (DIN 471)
- 12 Circlip (DIN 472)
- 13 Circlip (DIN 471)
- 14 Key (DIN 6885)
- 15 Key (DIN 6885)
- 16 Bolt (DIN 912)
- 17 Washer (DIN 7603)
- 18 Oil Plug (DIN 908)
- 19 Driving Pinion (With Key)
- 20 Driving Pinion
- 21 Circlip (DIN 471)
- 22 Key (DIN 6885)
- 23 Washer (DIN 127)
- 24 Bolt (DIN 933)
- 25 Motor

## PKD A 0290

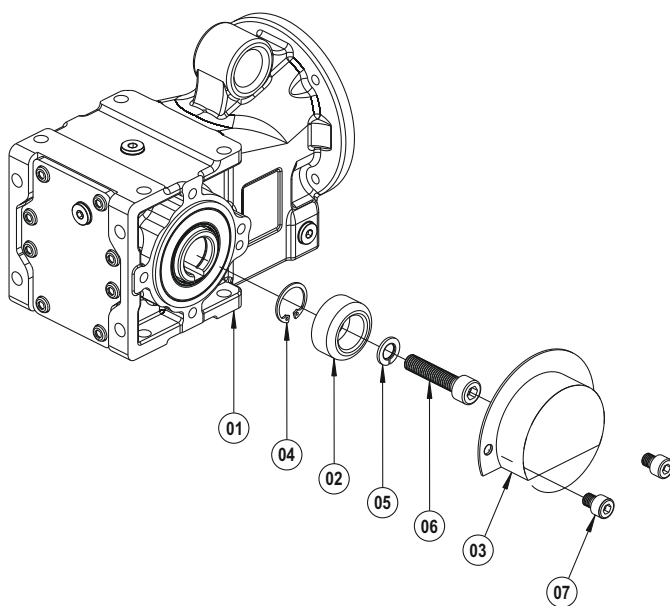
### Accessories

The exploded image may vary depending on the body and motor size, please contact us for the detailed exploded image.



#### Shrink Disk, Protection Cover

- 01 PKD Kit
- 02 Shrink Disk Hollow Shaft
- 03 Shrink Disk Bushing
- 04 Shrink Disk
- 05 Shrink Disk Cover
- 06 Bolt (DIN 912)



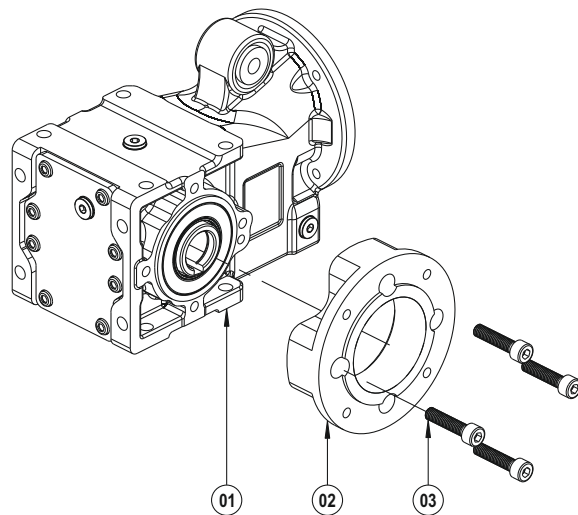
#### Puller, Protection Cover

- 01 PKD Kit
- 02 Puller Washer
- 03 Protection Cover
- 04 Circlip (DIN 472)
- 05 Washer (DIN 127)
- 06 Bolt (DIN 912)
- 07 Bolt (DIN 912)

## PKD A 0290

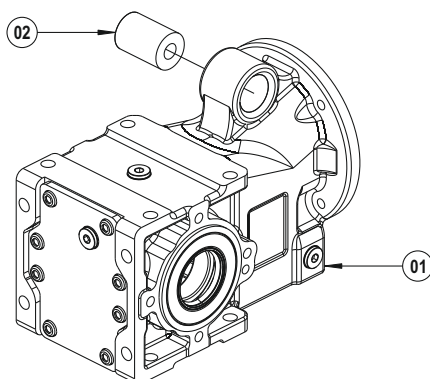
### Accessories

The exploded image may vary depending on the body and motor size, please contact us for the detailed exploded image.



#### B5 Output Flange

- 01 PKD Kit
- 02 B5 Output Flange
- 03 Bolt (DIN 912)

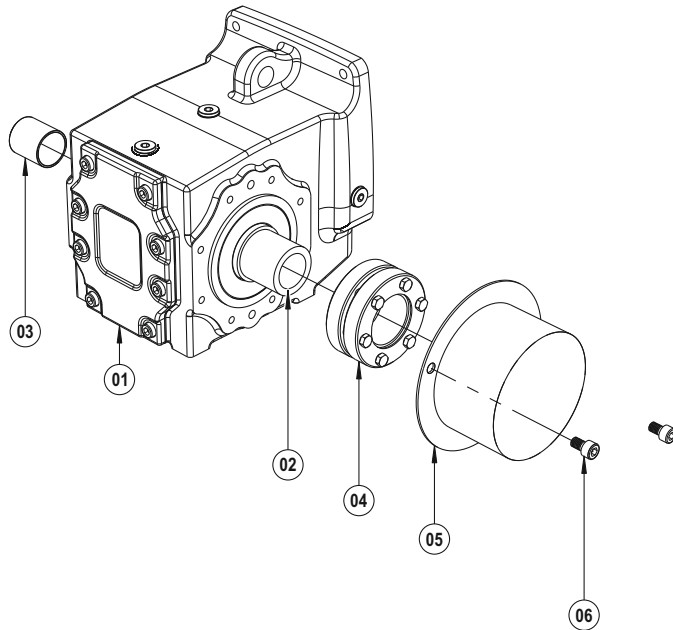


#### Rubber Buffer

- 01 PKD Kit
- 02 Rubber Buffer

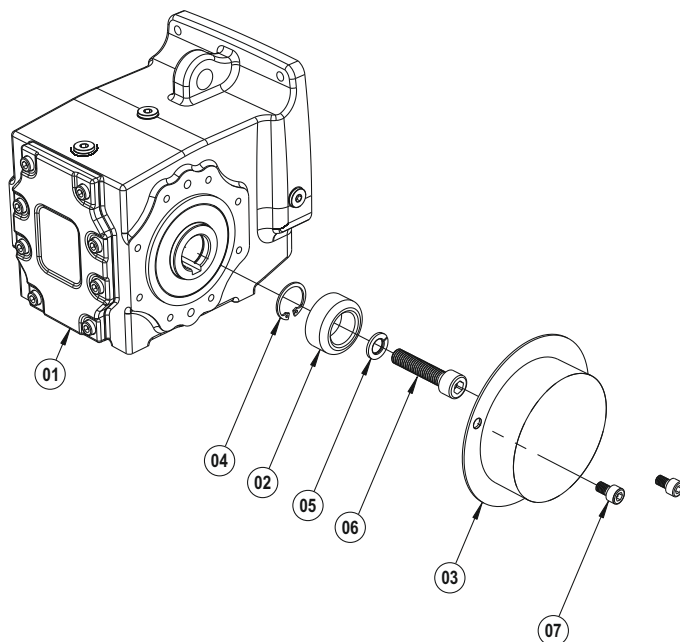
## Accessories

The exploded image may vary depending on the body and motor size, please contact us for the detailed exploded image.



### Shrink Disk, Protection Cover

- 01 PKD Kit
- 02 Shrink Disk Hollow Shaft
- 03 Shrink Disk Bushing
- 04 Shrink Disk
- 05 Shrink Disk Cover
- 06 Bolt (DIN 912)



### Puller, Protection Cover

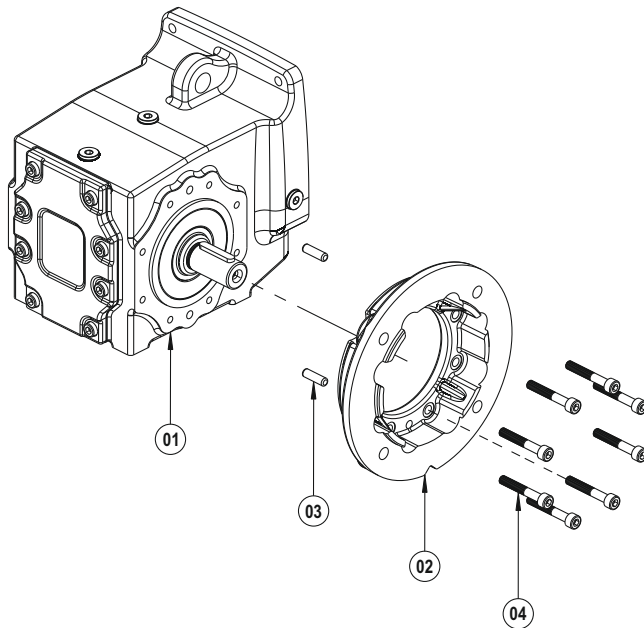
- 01 PKD Kit
- 02 Puller Washer
- 03 Protection Cover
- 04 Circlip (DIN 472)
- 05 Washer (DIN 127)
- 06 Bolt (DIN 912)
- 07 Bolt (DIN 912)



## PKD B 0290 ... H 5290

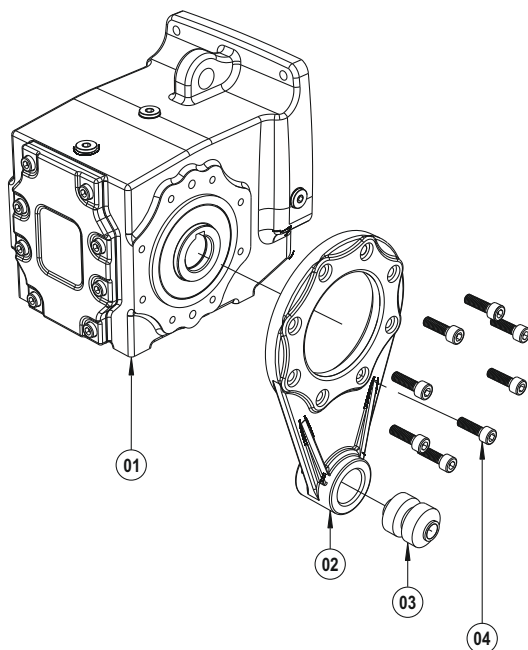
### Accessories

The exploded image may vary depending on the body and motor size, please contact us for the detailed exploded image.



#### B5 Output Flange

- 01 PKD Kit
- 02 B5 Output Flange
- 03 Pin
- 04 Bolt (DIN 912)



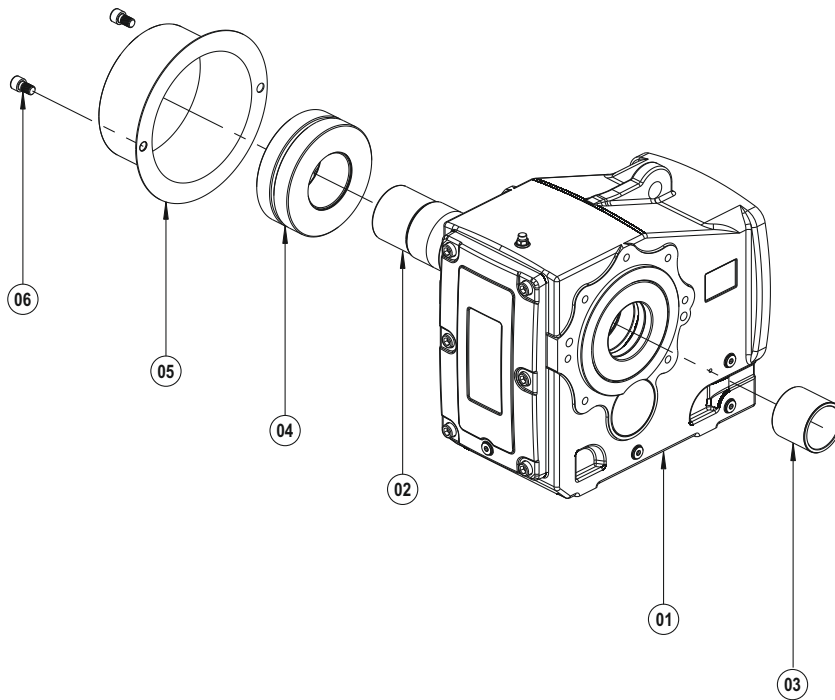
#### Torque Arm

- 01 PKD Kit
- 02 Torque Arm
- 03 Rubber Buffer
- 04 Bolt (DIN 912)

## PKD DG 1390 ... G 9390

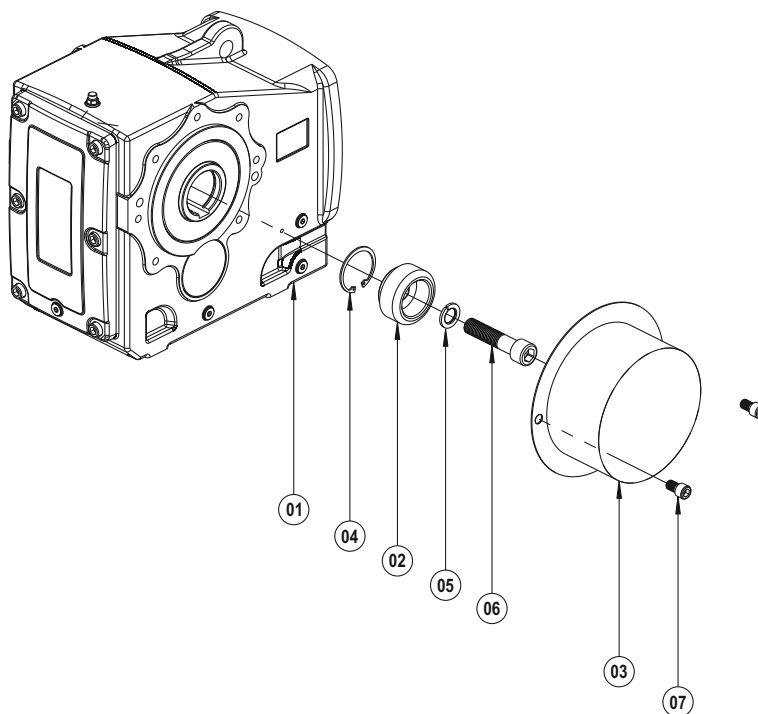
### Accessories

The exploded image may vary depending on the body and motor size, please contact us for the detailed exploded image.



#### Shrink Disk, Protection Cover

- 01 PKD Kit
- 02 Shrink Disk Hollow Shaft
- 03 Shrink Disk Bushing
- 04 Shrink Disk
- 05 Shrink Disk Cover
- 06 Bolt (DIN 912)



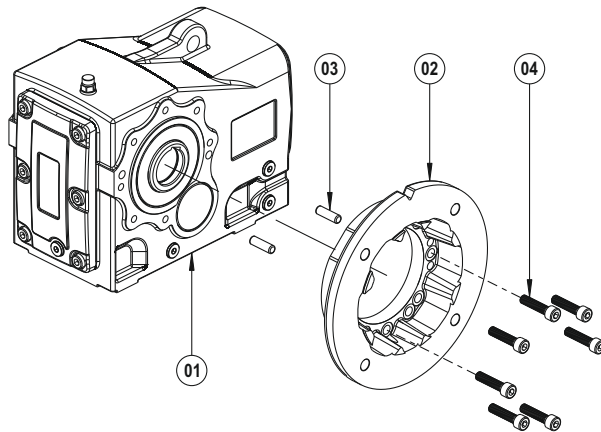
#### Puller, Protection Cover

- 01 PKD Kit
- 02 Puller Washer
- 03 Protection Cover
- 04 Circlip (DIN 472)
- 05 Washer (DIN 127)
- 06 Bolt (DIN 912)
- 07 Bolt (DIN 912)

## PKD DG 1390 ... G 9390

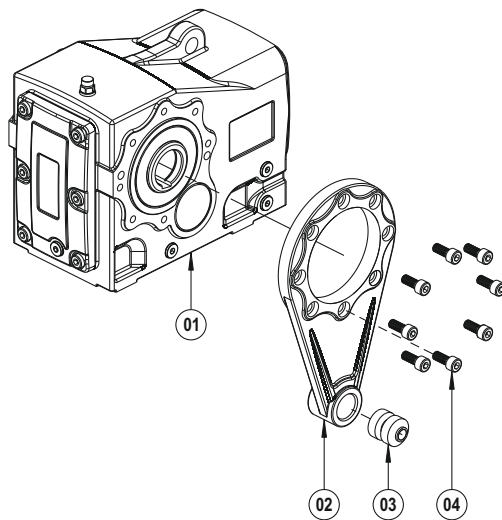
### Accessories

The exploded image may vary depending on the body and motor size, please contact us for the detailed exploded image.



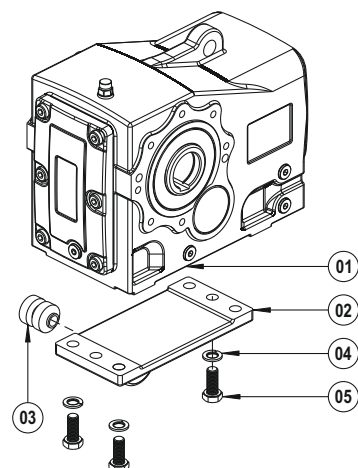
#### B5 Output Flange

- 01 PKD Kit
- 02 B5 Output Flange
- 03 Pin
- 04 Bolt (DIN 912)



#### Torque Arm

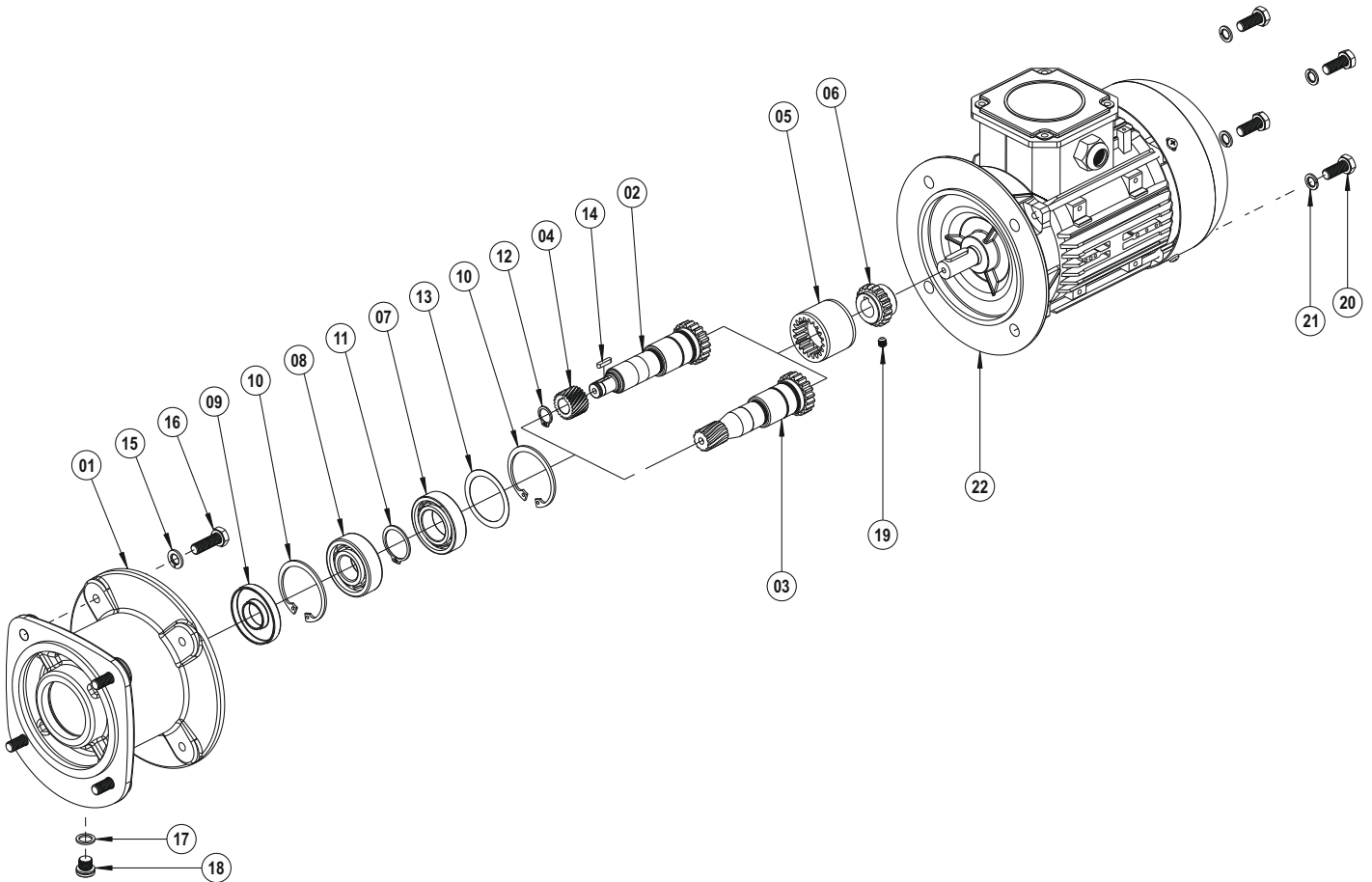
- 01 PKD Kit
- 02 Torque Arm
- 03 Rubber Buffer
- 04 Bolt (DIN 912)



#### Torque Arm Platform

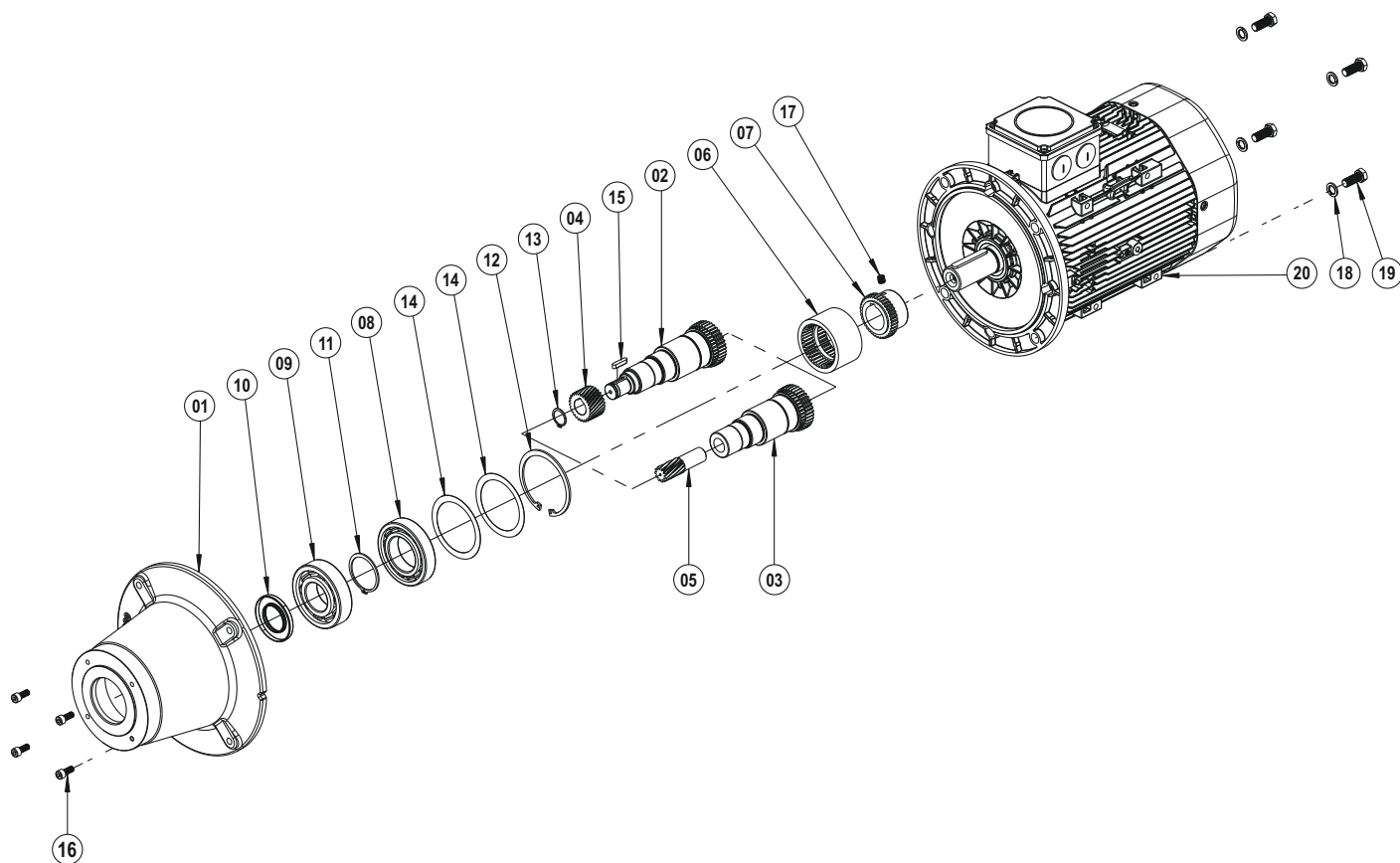
- 01 PKD Kit
- 02 Torque Arm Platform
- 03 Rubber Buffer
- 04 Washer (DIN 127)
- 05 Bolt (DIN 933)

The exploded image may vary depending on the body and motor size, please contact us for the detailed exploded image.



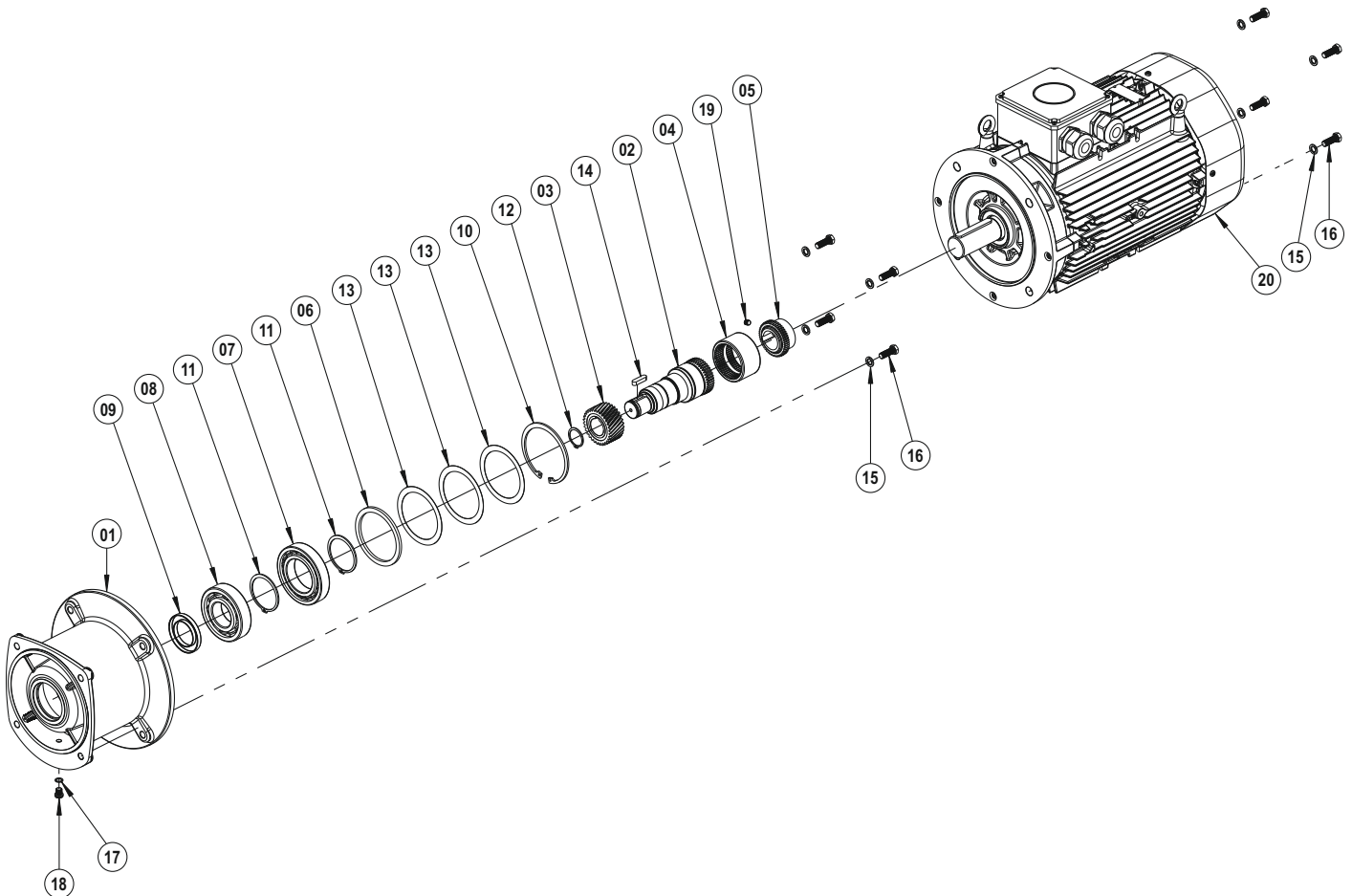
- 01 Gear Case
- 02 IEC Shaft (With Key)
- 03 IEC Shaft (With Gear)
- 04 Driving Pinion (With Key)
- 05 Plastic Coupling
- 06 Metal Coupling
- 07 Bearing
- 08 Bearing
- 09 Oil Seal
- 10 Circlip (DIN 472)
- 11 Circlip (DIN 471)
- 12 Circlip (DIN 471)
- 13 Shim (DIN 988)
- 14 Key (DIN 6885)
- 15 Washer (DIN 127)
- 16 Bolt (DIN 933)
- 17 Washer (DIN 7603)
- 18 Oil Plug (DIN 908)
- 19 Bolt (DIN 916)
- 20 Bolt (DIN 933)
- 21 Washer (DIN 127)
- 22 Motor

The exploded image may vary depending on the body and motor size, please contact us for the detailed exploded image.



- 01 Gear Case
- 02 IEC Shaft (With Key)
- 03 IEC Shaft
- 04 Driving Pinion (With Key)
- 05 Driving Pinion
- 06 Plastic Coupling
- 07 Metal Coupling
- 08 Bearing
- 09 Bearing
- 10 Oil Seal
- 11 Circlip (DIN 471)
- 12 Circlip (DIN 472)
- 13 Circlip (DIN 471)
- 14 Shim (DIN 988)
- 15 Key (DIN 9885)
- 16 Bolt (DIN 912)
- 17 Bolt (DIN 916)
- 18 Washer (DIN 127)
- 19 Bolt (DIN 933)
- 20 Motor

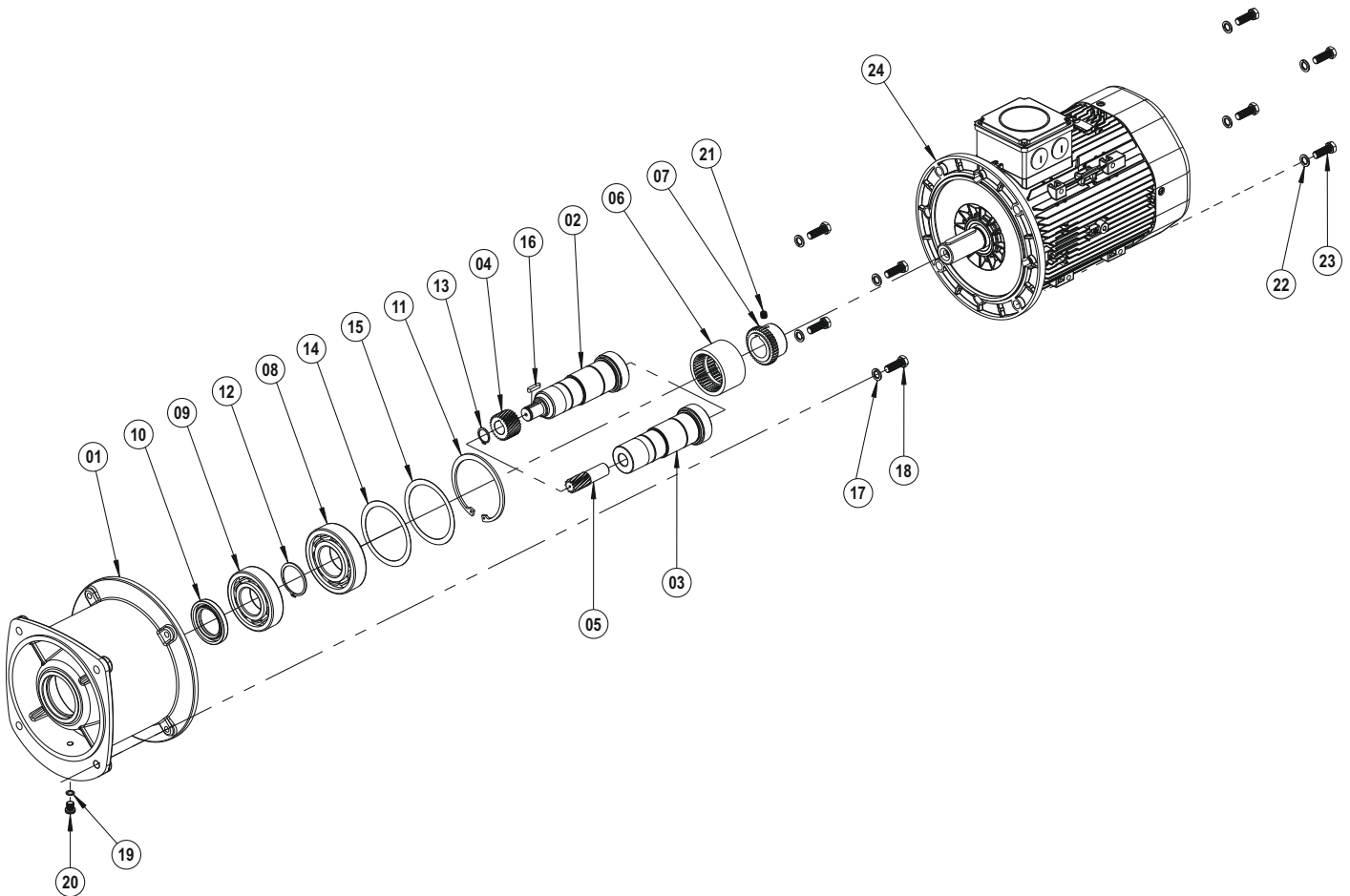
The exploded image may vary depending on the body and motor size, please contact us for the detailed exploded image.



- 01 Gear Case
- 02 IEC Shaft (With Key)
- 03 Driving Pinion (With Key)
- 04 Plastic Coupling
- 05 Metal Coupling
- 06 Washer
- 07 Bearing
- 08 Bearing
- 09 Oil Seal
- 10 Circlip (DIN 472)
- 11 Circlip (DIN 471)
- 12 Circlip (DIN 471)
- 13 Shim (DIN 988)
- 14 Key (DIN 9885)
- 15 Washer (DIN 127)
- 16 Bolt (DIN 933)
- 17 Washer (DIN 7603)
- 18 Oil Plug (DIN 908)
- 19 Bolt (DIN 916)
- 20 Motor

## IEC 132 ... 180

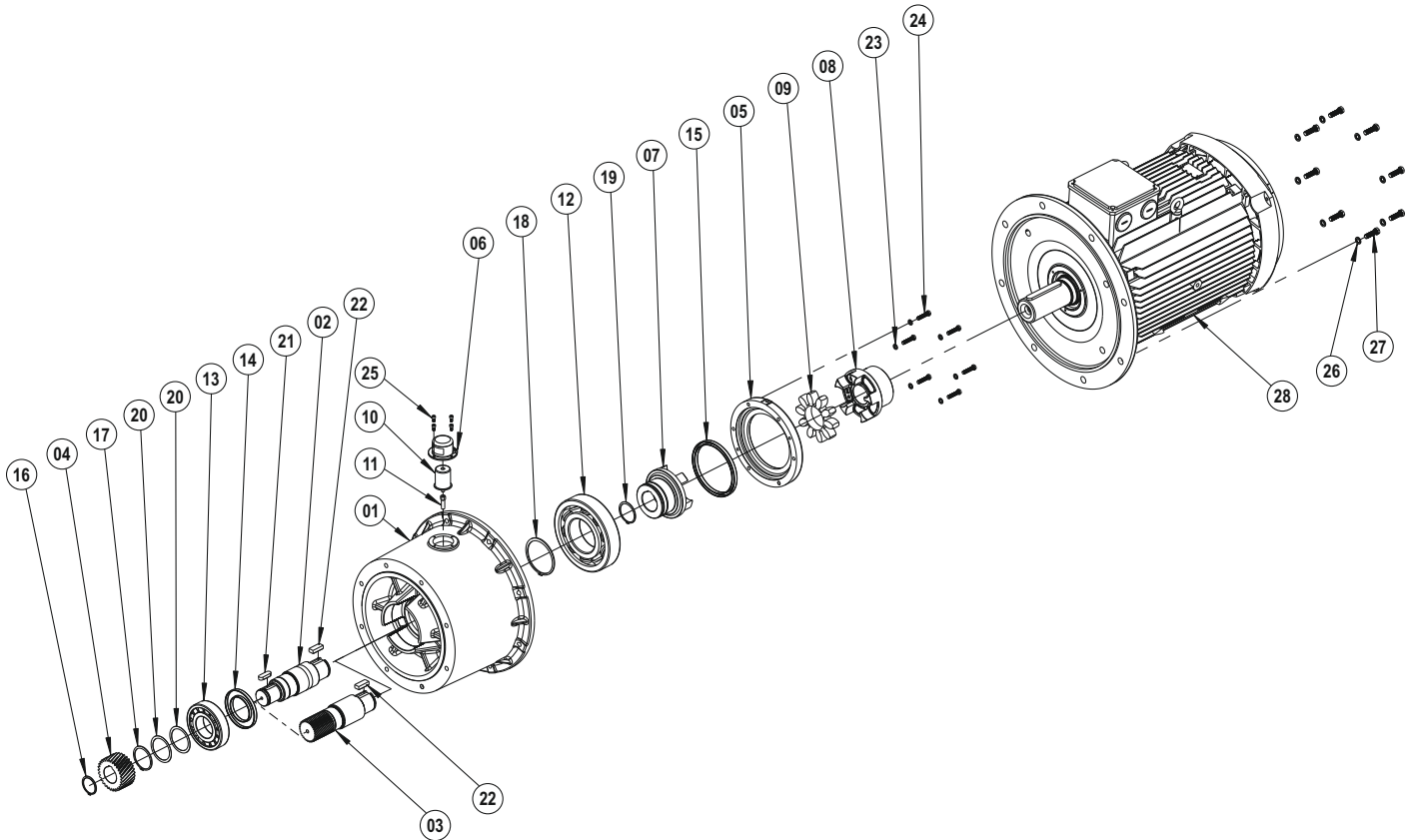
The exploded image may vary depending on the body and motor size, please contact us for the detailed exploded image.



- 01 Gear Case
- 02 IEC Shaft (With Key)
- 03 IEC Shaft
- 04 Driving Pinion (With Key)
- 05 Driving Pinion
- 06 Plastic Coupling
- 07 Metal Coupling
- 08 Bearing
- 09 Bearing
- 10 Oil Seal
- 11 Circlip (DIN 472)
- 12 Circlip (DIN 471)
- 13 Circlip (DIN 471)
- 14 Shim (DIN 988)
- 15 Shim (DIN 988)
- 16 Key (DIN 9885)
- 17 Washer (DIN 127)
- 18 Bolt (DIN 933)
- 19 Washer (DIN 7603)
- 20 Oil Plug (DIN 908)
- 21 Bolt (DIN 916)
- 22 Washer (DIN 127)
- 23 Bolt (DIN 933)
- 24 Motor

## IEC 160 ... 315

The exploded image may vary depending on the body and motor size, please contact us for the detailed exploded image.

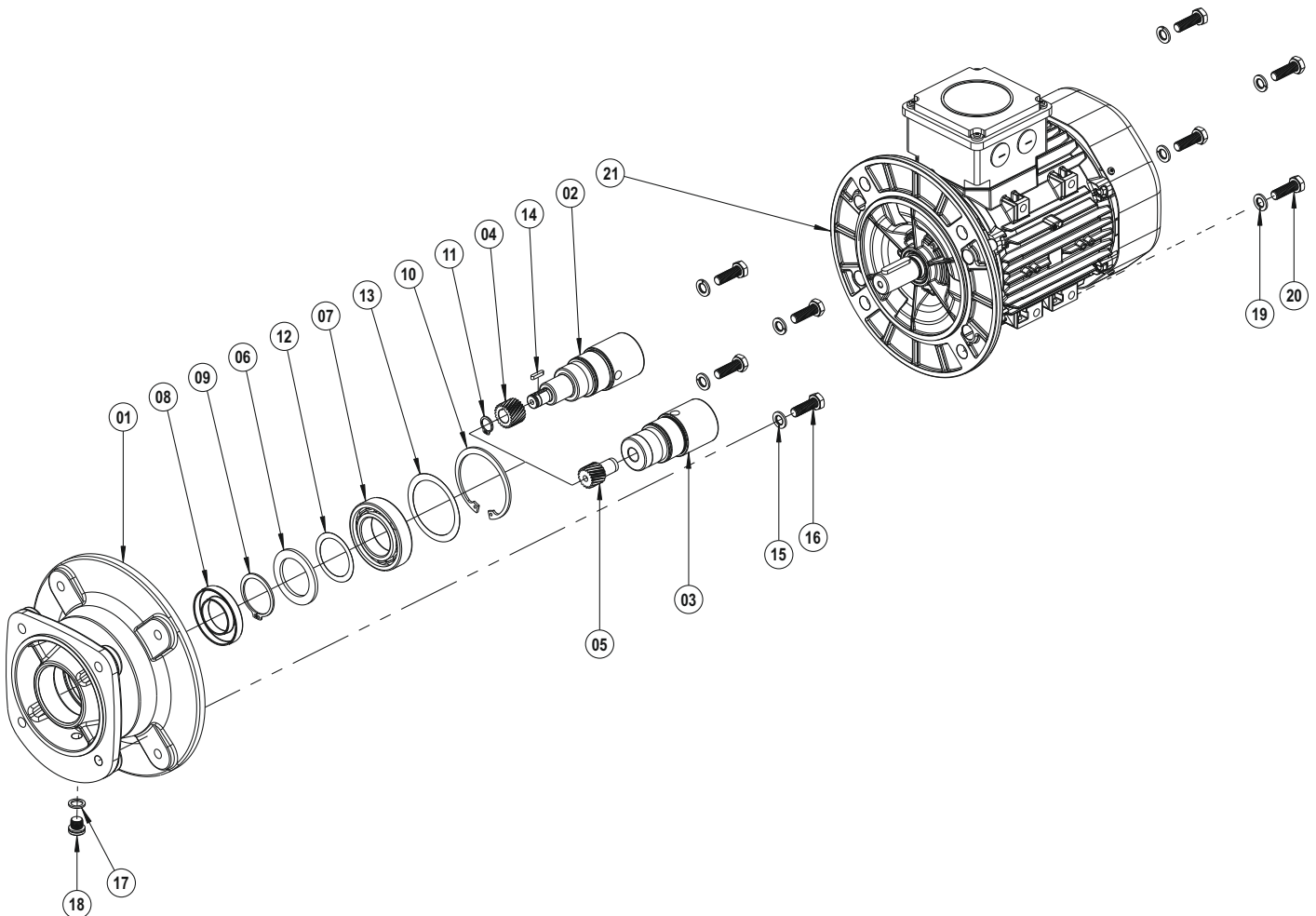


- 01 Gear Case
- 02 IEC Shaft (With Key)
- 03 IEC Shaft (With Gear)
- 04 Driving Pinion (With Key)
- 05 Bearing Flange
- 06 Lubrication Cover
- 07 Coupling (Gearbox Side)
- 08 Coupling (Motor Side)
- 09 Spider
- 10 Automatic Lubricator
- 11 Automatic Lubricator Adapter
- 12 Bearing
- 13 Bearing
- 14 Oil Seal
- 15 Oil Seal
- 16 Circlip (DIN 471)
- 17 Circlip (DIN 471)
- 18 Circlip (DIN 471)
- 19 Circlip (DIN 471)
- 20 Shim (DIN 988)
- 21 Key (DIN 9885)
- 22 Key (DIN 9885)
- 23 Washer (DIN 127)
- 24 Bolt (DIN 933)
- 25 Bolt (DIN 912)
- 26 Washer (DIN 127)
- 27 Bolt (DIN 933)
- 28 Motor



## PAM B5 / 63 ... 315

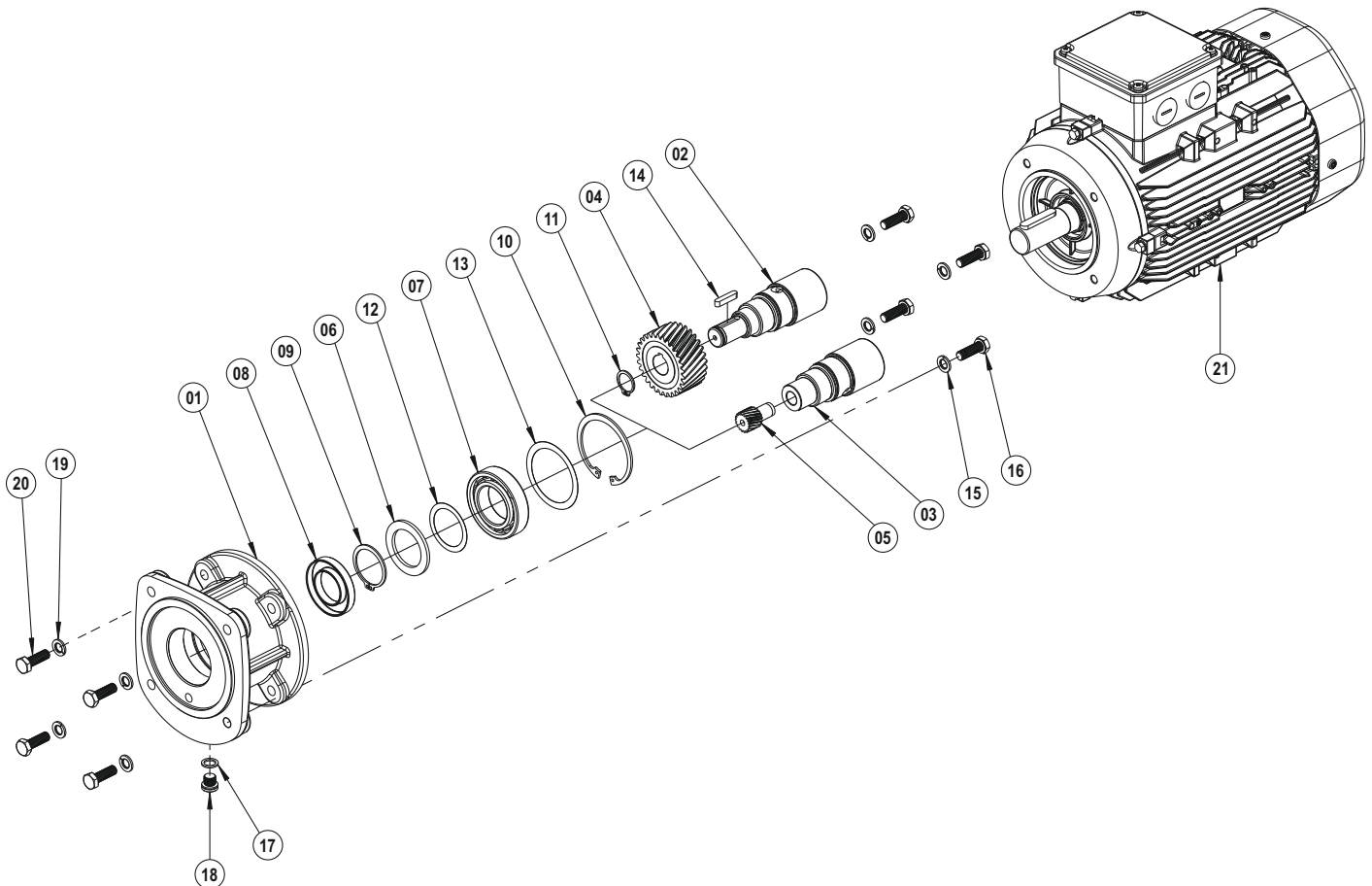
The exploded image may vary depending on the body and motor size, please contact us for the detailed exploded image.



- 01 Gear Case
- 02 PAM Shaft (With Key)
- 03 PAM Shaft
- 04 Driving Pinion (With Key)
- 05 Driving Pinion
- 06 Washer
- 07 Bearing
- 08 Oil Seal
- 09 Circlip (DIN 471)
- 10 Circlip (DIN 472)
- 11 Circlip (DIN 471)
- 12 Shim (DIN 988)
- 13 Shim (DIN 988)
- 14 Key (DIN 9885)
- 15 Washer (DIN 127)
- 16 Bolt (DIN 933)
- 17 Washer (DIN 7603)
- 18 Oil Plug (DIN 908)
- 19 Washer (DIN 127)
- 20 Bolt (DIN 933)
- 21 Motor

## PAM B14 / 63 ... 132

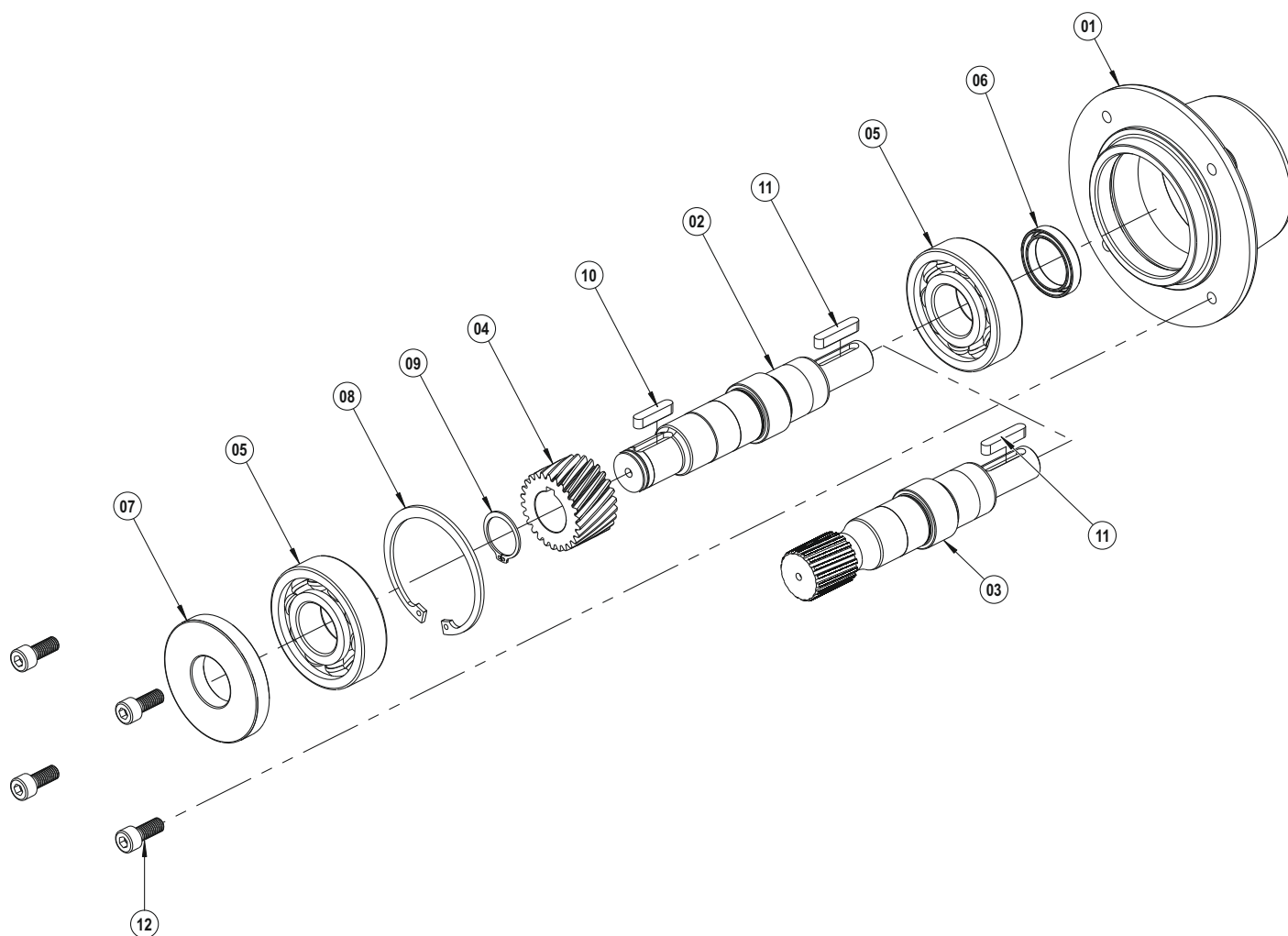
The exploded image may vary depending on the body and motor size, please contact us for the detailed exploded image.



- 01 Gear Case
- 02 PAM Shaft (With Key)
- 03 PAM Shaft
- 04 Driving Pinion (With Key)
- 05 Driving Pinion
- 06 Washer
- 07 Bearing
- 08 Oil Seal
- 09 Circlip (DIN 471)
- 10 Circlip (DIN 472)
- 11 Circlip (DIN 471)
- 12 Shim (DIN 988)
- 13 Shim (DIN 988)
- 14 Key (DIN 9885)
- 15 Washer (DIN 127)
- 16 Bolt (DIN 933)
- 17 Washer (DIN 7603)
- 18 Oil Plug (DIN 908)
- 19 Washer (DIN 127)
- 20 Bolt (DIN 933)
- 21 Motor

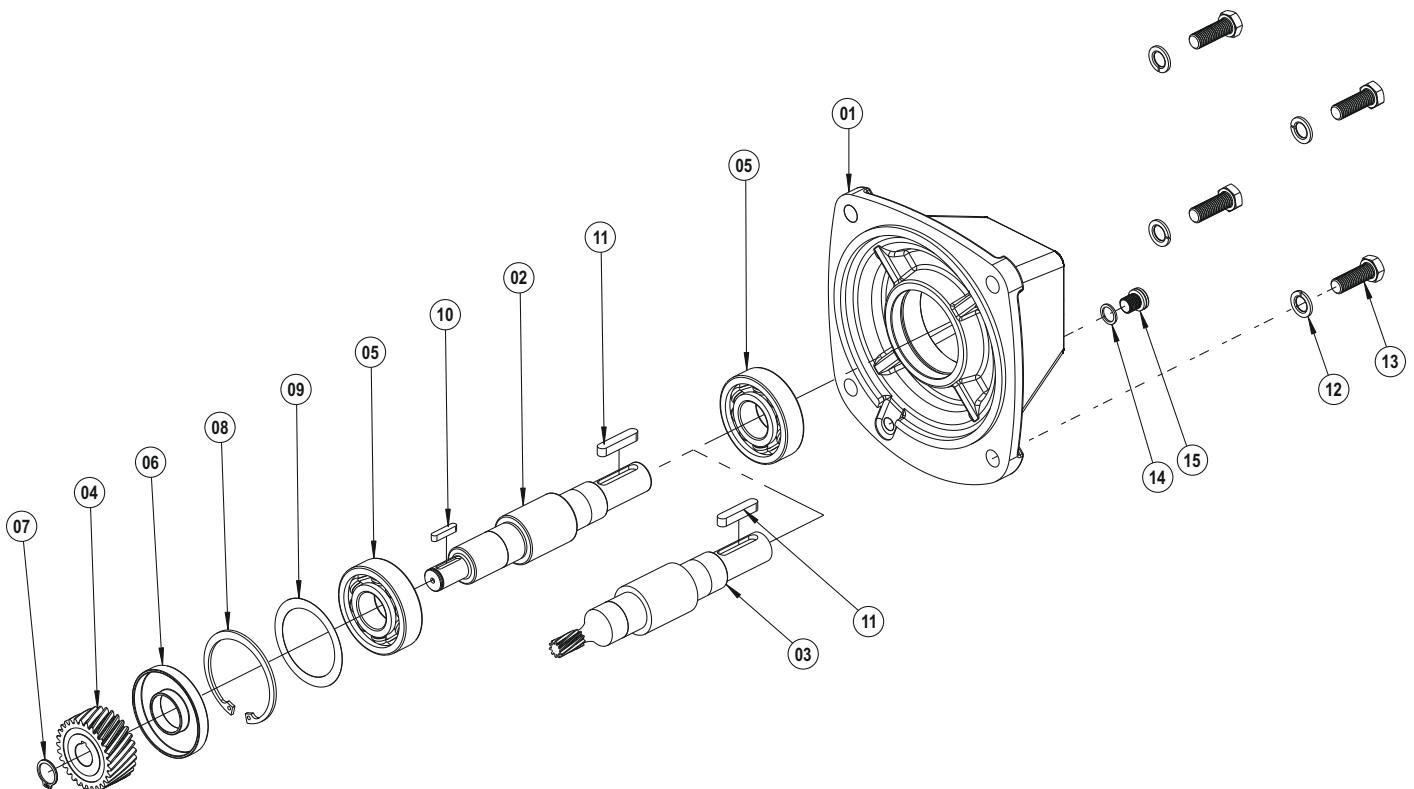
## W 109

The exploded image may vary depending on the body and motor size, please contact us for the detailed exploded image.



- 01 Gear Case
- 02 W Shaft (With Key)
- 03 W Shaft (With Gear)
- 04 Driving Pinion
- 05 Bearing
- 06 Oil Seal
- 07 Oil Seal
- 08 Circlip (DIN 472)
- 09 Circlip (DIN 471)
- 10 Key (DIN 9885)
- 11 Key (DIN 9885)
- 12 Bolt (DIN 912)

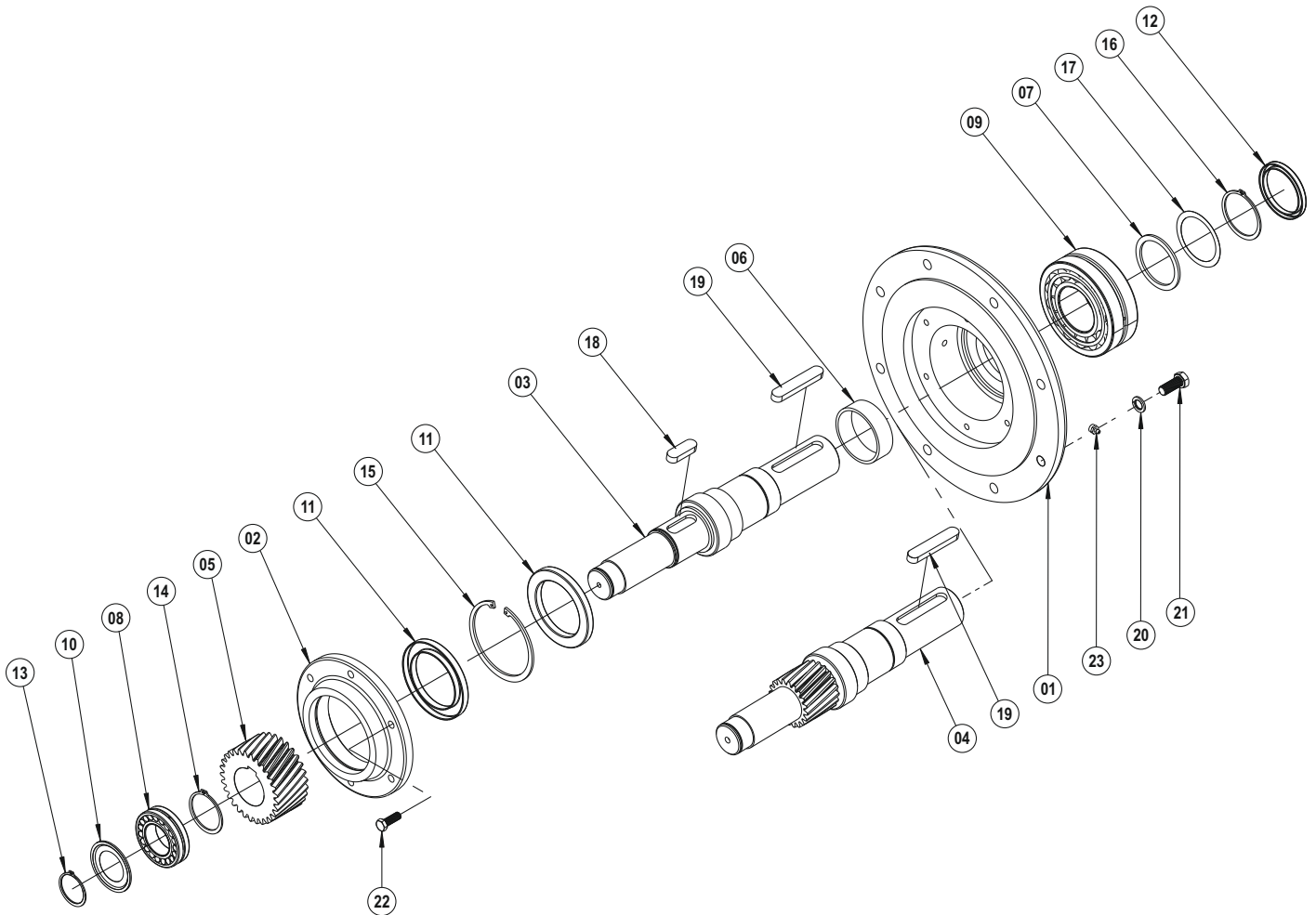
The exploded image may vary depending on the body and motor size, please contact us for the detailed exploded image.



- 01 Gear Case
- 02 W Shaft (With Key)
- 03 W Shaft (With Gear)
- 04 Driving Pinion (With Key)
- 05 Bearing
- 06 Oil Seal
- 07 Circlip (DIN 471)
- 08 Circlip (DIN 472)
- 09 Shim (DIN 988)
- 10 Key (DIN 9885)
- 11 Key (DIN 9885)
- 12 Washer (DIN 127)
- 13 Bolt (DIN 933)
- 14 Washer (DIN 7603)
- 15 Oil Plug (DIN 908)

## W 253

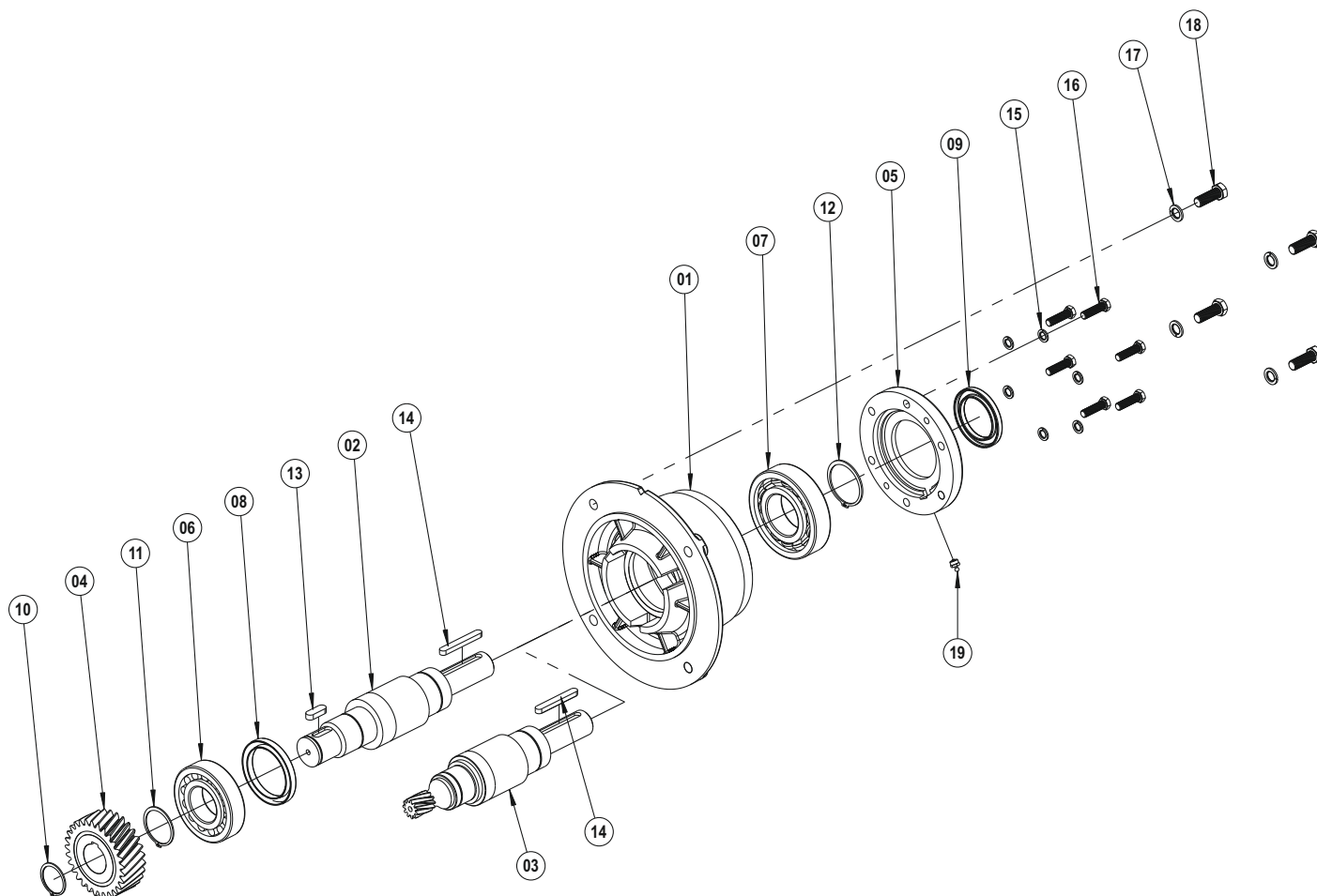
The exploded image may vary depending on the body and motor size, please contact us for the detailed exploded image.



- 01 Gear Case
- 02 Bearing Cover
- 03 W Shaft (With Key)
- 04 W Shaft (With Gear)
- 05 Driving Pinion (With Key)
- 06 Spacer
- 07 Washer
- 08 Bearing
- 09 Bearing
- 10 Nilos-Ring
- 11 Oil Seal
- 12 Oil Seal
- 13 Circlip (DIN 471)
- 14 Circlip (DIN 471)
- 15 Circlip (DIN 472)
- 16 Circlip (DIN 471)
- 17 Shim (DIN 988)
- 18 Key (DIN 9885)
- 19 Key (DIN 9885)
- 20 Washer (DIN 127)
- 21 Bolt (DIN 933)
- 22 Bolt (DIN 933)
- 23 Grease Nipple

## W 288

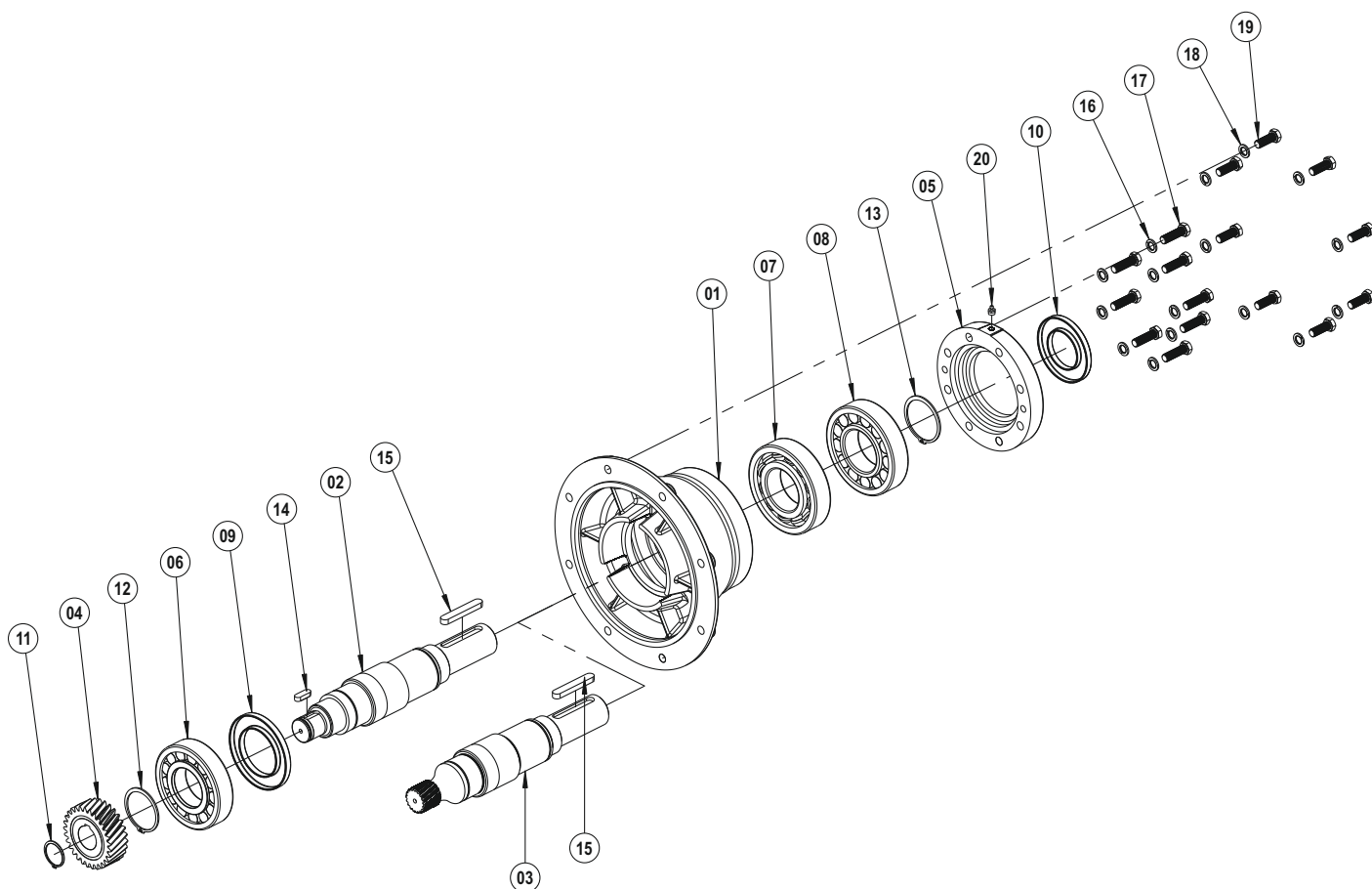
The exploded image may vary depending on the body and motor size, please contact us for the detailed exploded image.



- 01 Gear Case
- 02 W Shaft (With Key)
- 03 W Shaft (With Gear)
- 04 Driving Pinion (With Key)
- 05 Bearing Flange
- 06 Bearing
- 07 Bearing
- 08 Oil Seal
- 09 Oil Seal
- 10 Circlip (DIN 471)
- 11 Circlip (DIN 471)
- 12 Circlip (DIN 471)
- 13 Key (DIN 9885)
- 14 Key (DIN 9885)
- 15 Washer (DIN 127)
- 16 Bolt (DIN 933)
- 17 Washer (DIN 127)
- 18 Bolt (DIN 933)
- 19 Grease Nipple

## W 397

The exploded image may vary depending on the body and motor size, please contact us for the detailed exploded image.



- 01 Gear Case
- 02 W Shaft (With Key)
- 03 W Shaft (With Gear)
- 04 Driving Pinion (With Key)
- 05 Bearing Flange
- 06 Bearing
- 07 Bearing
- 08 Bearing
- 09 Oil Seal
- 10 Oil Seal
- 11 Circlip (DIN 471)
- 12 Circlip (DIN 471)
- 13 Circlip (DIN 471)
- 14 Key (DIN 6885)
- 15 Key (DIN 6885)
- 16 Washer (DIN 127)
- 17 Bolt (DIN 933)
- 18 Washer (DIN 127)
- 19 Bolt (DIN 933)
- 20 Grease Nipple







- Ata OSB Mah. Astim 1. Cad. No: 4, Pk 105 Efeler / Aydın / TÜRKİYE
- T: +90 256 231 19 12 - 16 (pbx)
- F: +90 256 231 19 17
- info@pgr.com.tr - satissonrasi@pgr.com.tr
- www.pgr.com.tr