

www.pgr.com.tr

**PGR<sup>®</sup>**  
DRIVE TECHNOLOGIES

| EN |

# GENERAL PART LIST

# PSH | SERIES

Helical Worm Gear Units

We reserve the right to our company to make changes or  
modifications to catalogue without prior notice.

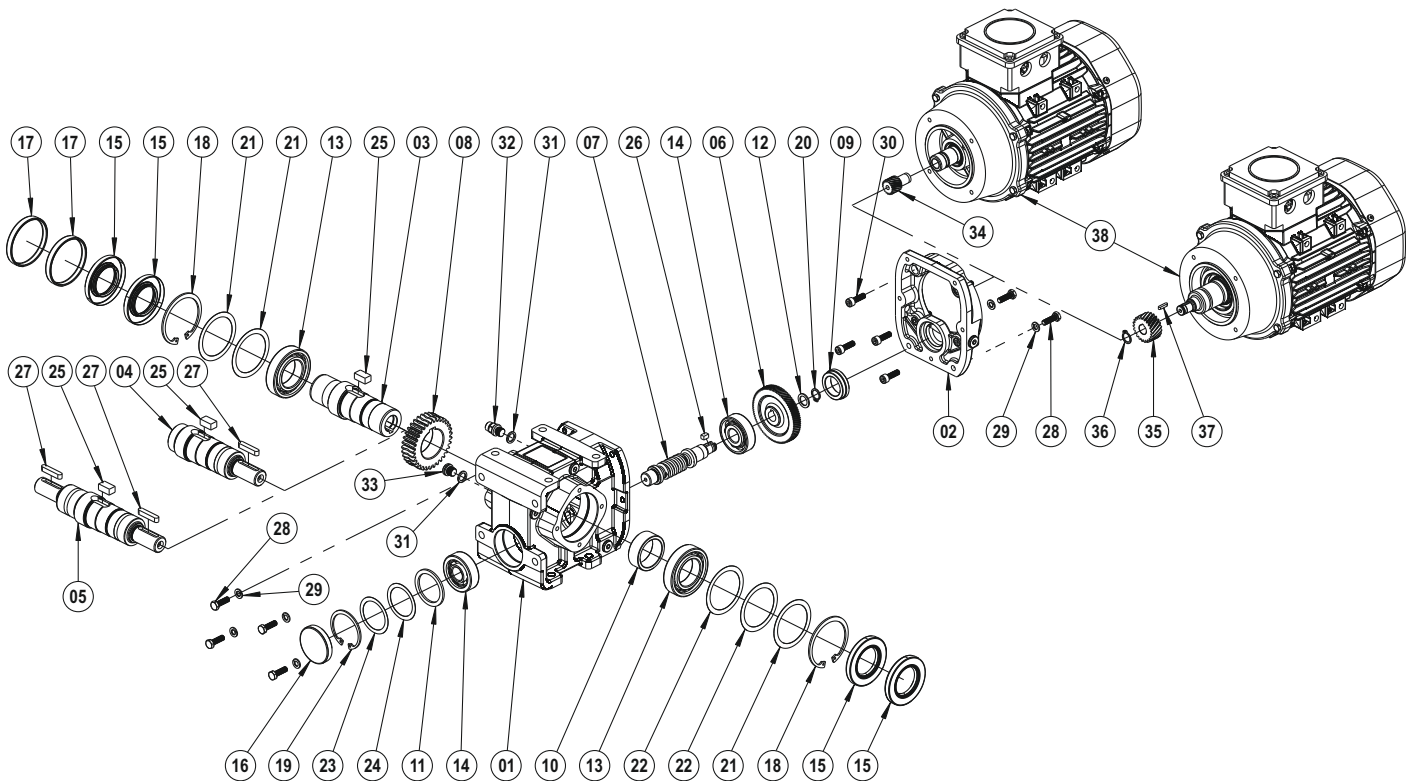




## PSH 2040

### DG - TMA - TMG

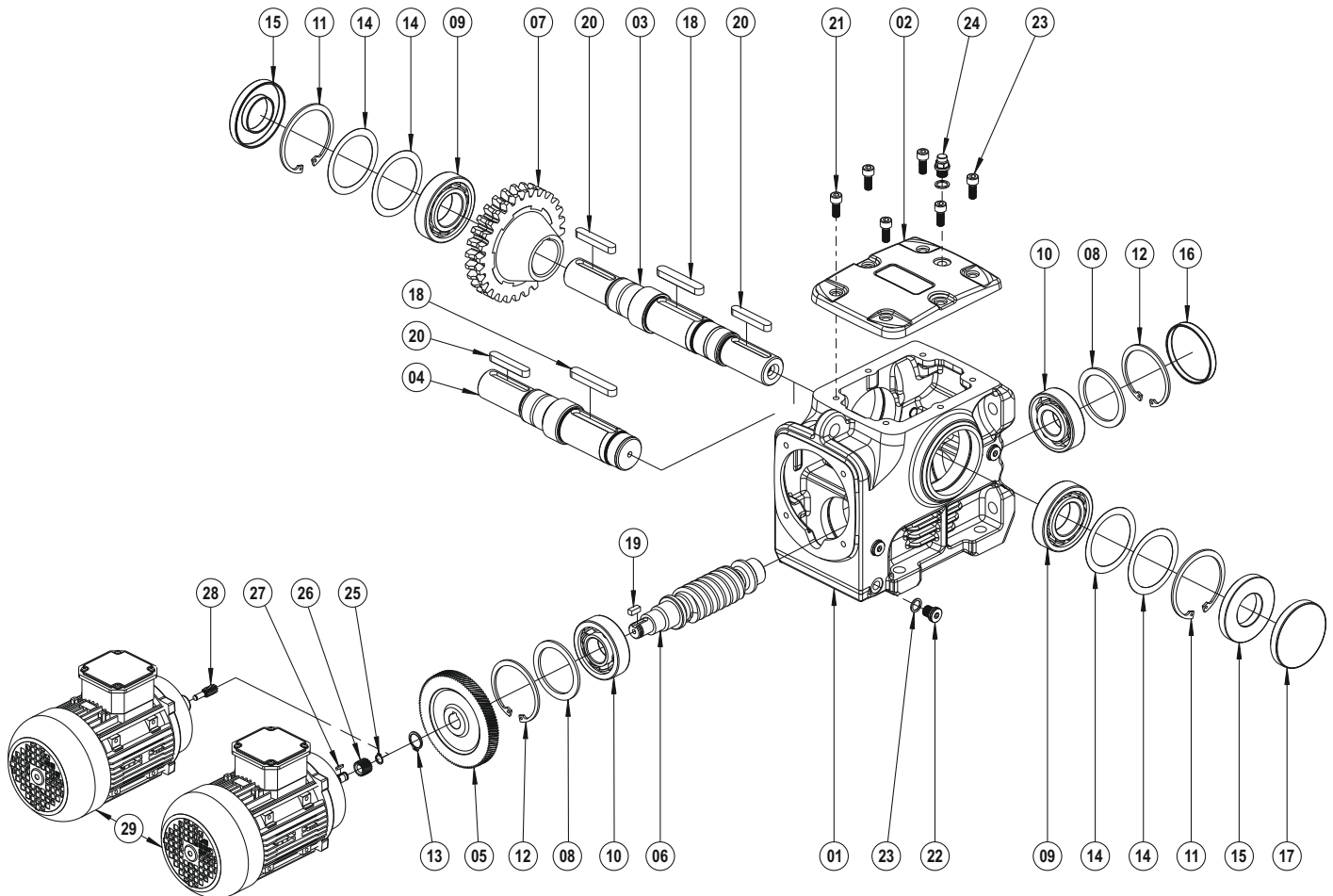
The exploded image may vary depending on the body and motor size, please contact us for the detailed exploded image.



- |                        |                              |
|------------------------|------------------------------|
| 01 Gear Case           | 20 Circlip (DIN 471)         |
| 02 Intermediate Flange | 21 Shim (DIN 988)            |
| 03 Hollow Shaft        | 22 Shim (DIN 988)            |
| 04 Output Solid Shaft  | 23 Shim (DIN 988)            |
| 05 Output Solid Shaft  | 24 Shim (DIN 988)            |
| 06 Driving Gear        | 25 Key (DIN 6885)            |
| 07 Pinion Shaft        | 26 Key (DIN 6885)            |
| 08 Driven Gear         | 27 Key (DIN 6885)            |
| 09 Spacer              | 28 Bolt (DIN 933)            |
| 10 Spacer              | 29 Washer (DIN 127)          |
| 11 Washer              | 30 Bolt (DIN 912)            |
| 12 Washer              | 31 Washer (DIN 7603)         |
| 13 Bearing             | 32 Vent Plug                 |
| 14 Bearing             | 33 Oil Plug (DIN 908)        |
| 15 Oil Seal            | 34 Driving Pinion            |
| 16 Oil Cover           | 35 Driving Pinion (With Key) |
| 17 Oil Cover           | 36 Circlip (DIN 471)         |
| 18 Circlip (DIN 472)   | 37 Key (DIN 6885)            |
| 19 Circlip (DIN 472)   | 38 Motor                     |

## TMA - ÇMA

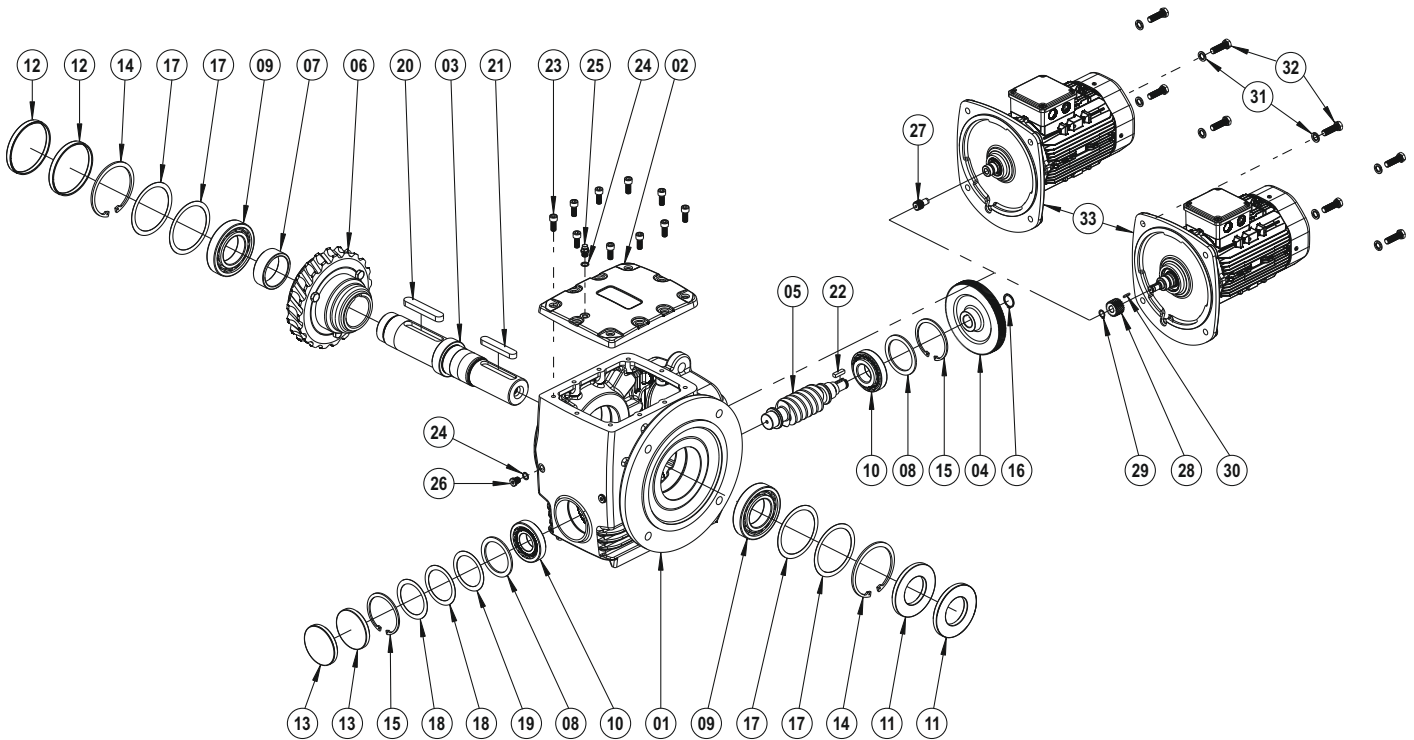
The exploded image may vary depending on the body and motor size, please contact us for the detailed exploded image.



- |    |                    |    |                           |
|----|--------------------|----|---------------------------|
| 01 | Gear Case          | 16 | Oil Cover                 |
| 02 | Cover              | 17 | Oil Cover                 |
| 03 | Output Solid Shaft | 18 | Key (DIN 6885)            |
| 04 | Output Solid Shaft | 19 | Key (DIN 6885)            |
| 05 | Driving Pinion     | 20 | Key (DIN 6885)            |
| 06 | Driving Gear       | 21 | Bolt (DIN 912)            |
| 07 | Worm Wheel         | 22 | Oil Plug (DIN 908)        |
| 08 | Washer             | 23 | Washer (DIN 7603)         |
| 09 | Bearing            | 24 | Vent Plug                 |
| 10 | Bearing            | 25 | Circlip (DIN 471)         |
| 11 | Circlip (DIN 472)  | 26 | Driving Pinion (With Key) |
| 12 | Circlip (DIN 472)  | 27 | Key (DIN 6885)            |
| 13 | Circlip (DIN 471)  | 28 | Driving Pinion            |
| 14 | Shim (DIN 988)     | 29 | Motor                     |
| 15 | Oil Seal           |    |                           |

### TMG - B5

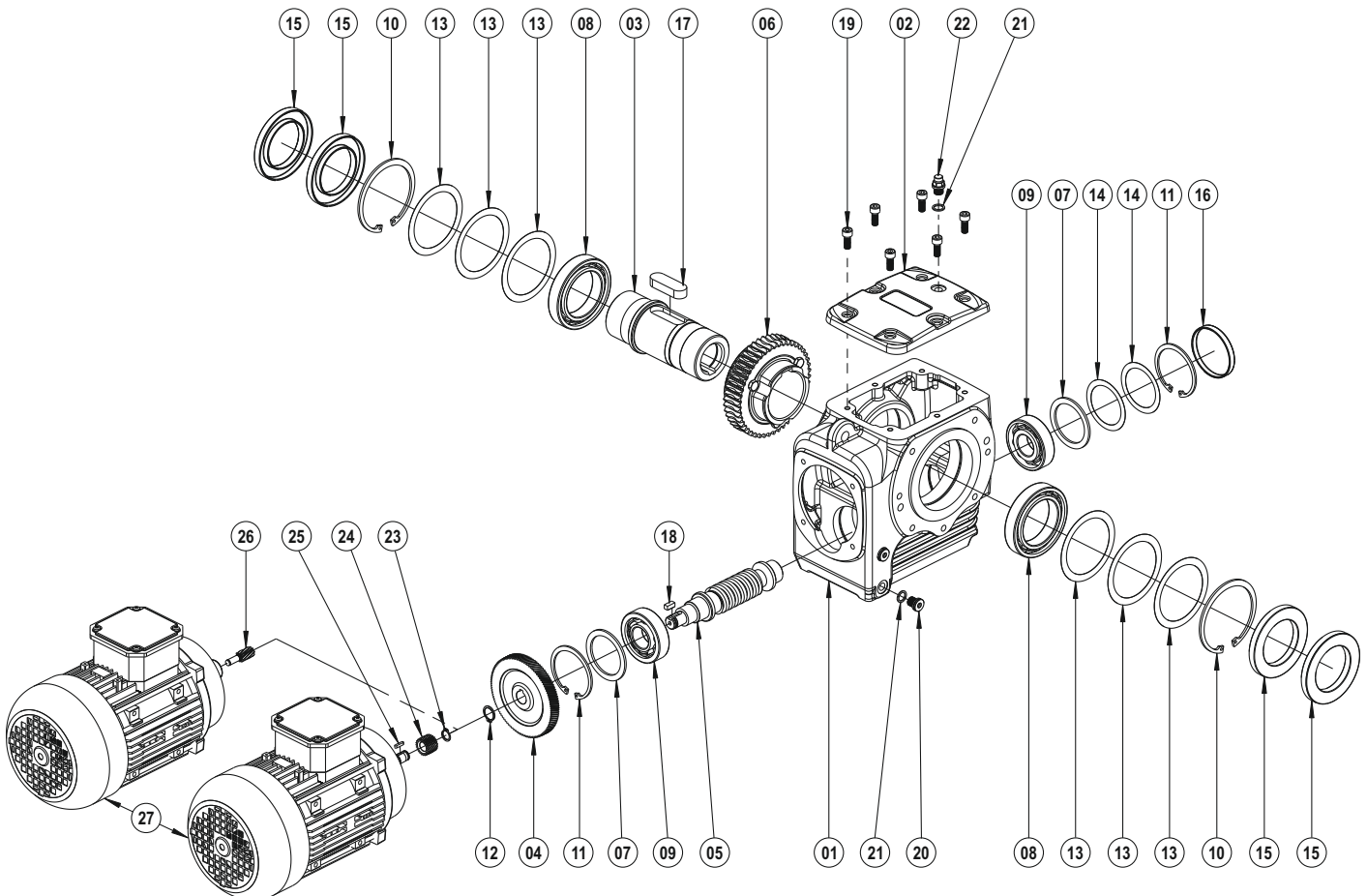
The exploded image may vary depending on the body and motor size, please contact us for the detailed exploded image.



- 01 Gear Case
- 02 Cover
- 03 Output Solid Shaft
- 04 Driving Gear
- 05 Driving Pinion
- 06 Driving Gear
- 07 Spacer
- 08 Washer
- 09 Bearing
- 10 Bearing
- 11 Oil Seal
- 12 Oil Cover
- 13 Oil Cover
- 14 Circlip (DIN 472)
- 15 Circlip (DIN 472)
- 16 Circlip (DIN 471)
- 17 Shim (DIN 988)
- 18 Shim (DIN 988)
- 19 Shim (DIN 988)
- 20 Key (DIN 6885)
- 21 Key (DIN 6885)
- 22 Key (DIN 6885)
- 23 Bolt (DIN 912)
- 24 Washer (DIN 7603)
- 25 Vent Plug
- 26 Oil Plug (DIN 908)
- 27 Driving Pinion
- 28 Driving Pinion (With Key)
- 29 Circlip (DIN 471)
- 30 Key (DIN 6885)
- 31 Washer (DIN 127)
- 32 Bolt (DIN 933)
- 33 Motor

**DG**

The exploded image may vary depending on the body and motor size, please contact us for the detailed exploded image.

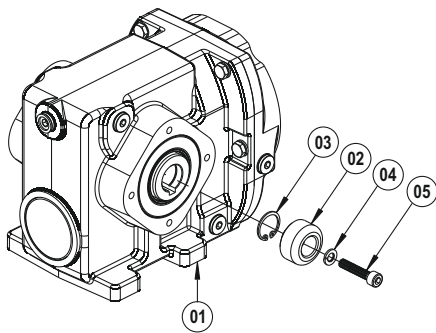


- 01 Gear Case
- 02 Cover
- 03 Hollow Shaft
- 04 Driving Gear
- 05 Driving Pinion
- 06 Driving Gear
- 07 Washer
- 08 Bearing
- 09 Bearing
- 10 Circlip (DIN 472)
- 11 Circlip (DIN 472)
- 12 Circlip (DIN 471)
- 13 Shim (DIN 988)
- 14 Shim (DIN 988)
- 15 Oil Seal
- 16 Oil Cover
- 17 Key (DIN 6885)
- 18 Key (DIN 6885)
- 19 Bolt (DIN 912)
- 20 Oil Plug (DIN 908)
- 21 Washer (DIN 7603)
- 22 Vent Plug
- 23 Circlip (DIN 471)
- 24 Driving Pinion (With Key)
- 25 Key (DIN 6885)
- 26 Driving Pinion
- 27 Motor



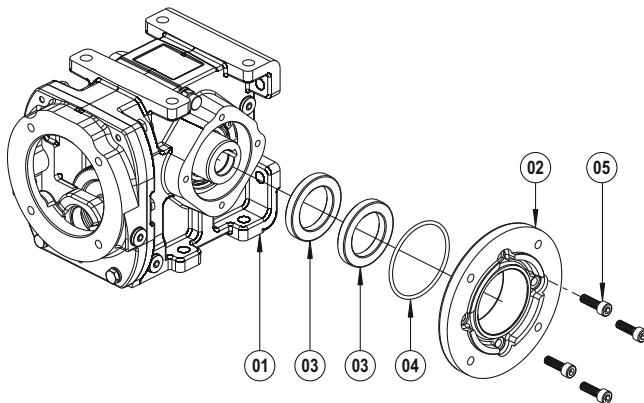
## Accessories

The exploded image may vary depending on the body and motor size, please contact us for the detailed exploded image.



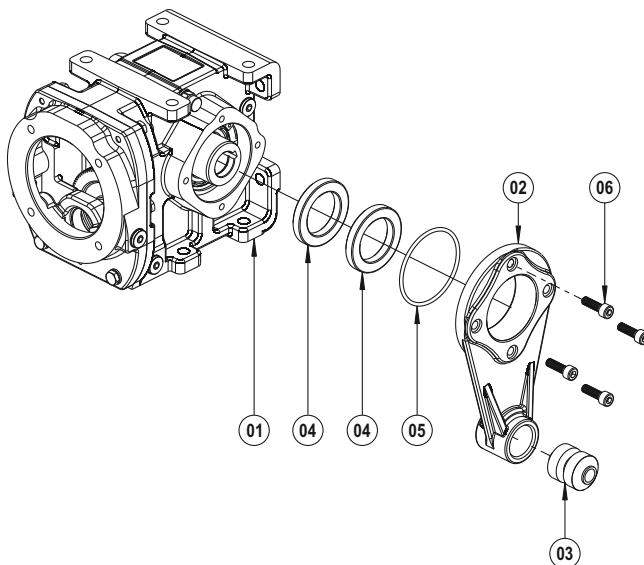
### Puller

- 01 PSH Kit
- 02 Puller Washer
- 03 Circlip (DIN 472)
- 04 Washer (DIN 127)
- 05 Bolt (DIN 912)



### B5 Output Flange

- 01 PSH Kit
- 02 B5 Output Flange
- 03 Oil Seal
- 04 O-Ring
- 05 Bolt (DIN 912)

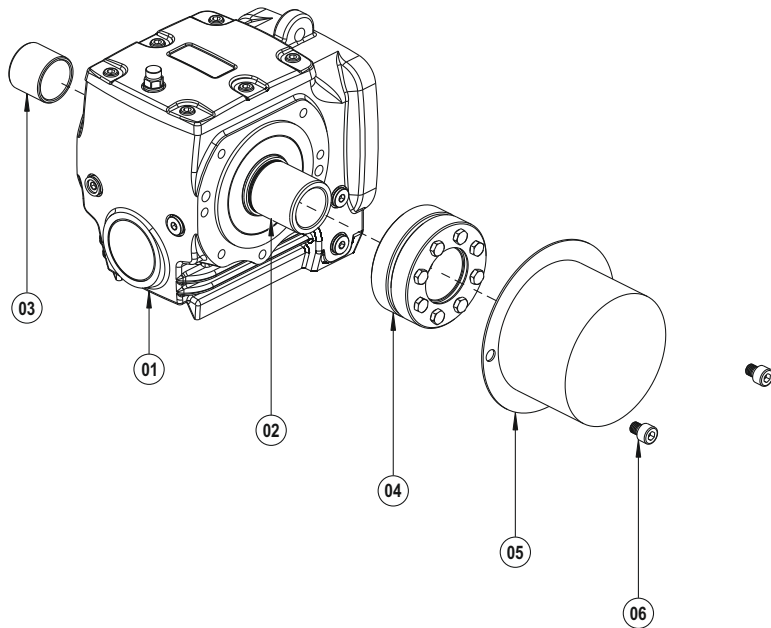


### Torque Arm

- 01 PSH Kit
- 02 Torque Arm
- 03 Rubber Buffer
- 04 Oil Seal
- 05 O-Ring
- 06 Bolt (DIN 912)

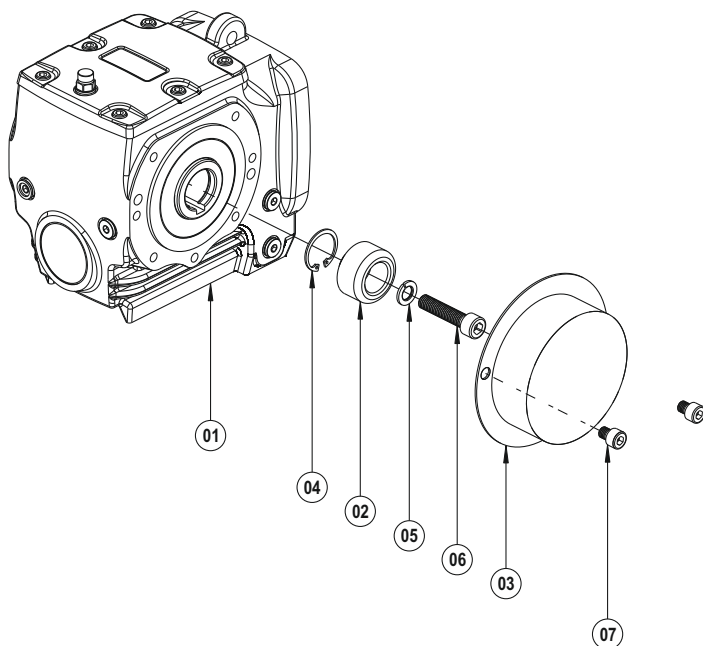
## Accessories

The exploded image may vary depending on the body and motor size, please contact us for the detailed exploded image.



### Shrink Disk, Protection Cover

- 01 PSH Kit
- 02 Shrink Disk Hollow Shaft
- 03 Shrink Disk Bushing
- 04 Shrink Disk
- 05 Shrink Disk Cover
- 06 Bolt (DIN 912)

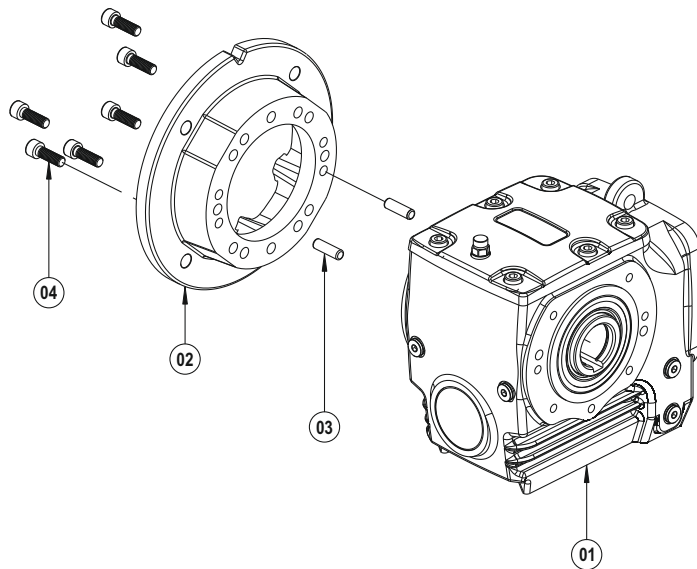


### Puller, Protection Cover

- 01 PSH Kit
- 02 Puller Washer
- 03 Protection Cover
- 04 Circlip (DIN 472)
- 05 Washer (DIN 127)
- 06 Bolt (DIN 912)
- 07 Bolt (DIN 912)

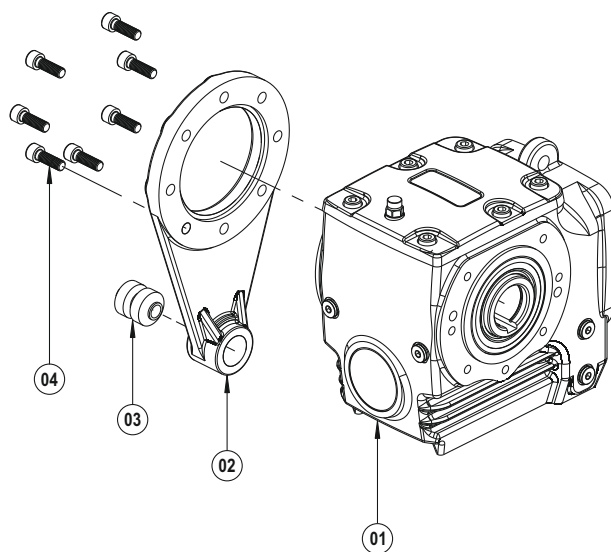
### Accessories

The exploded image may vary depending on the body and motor size, please contact us for the detailed exploded image.



#### B5 Output Flange

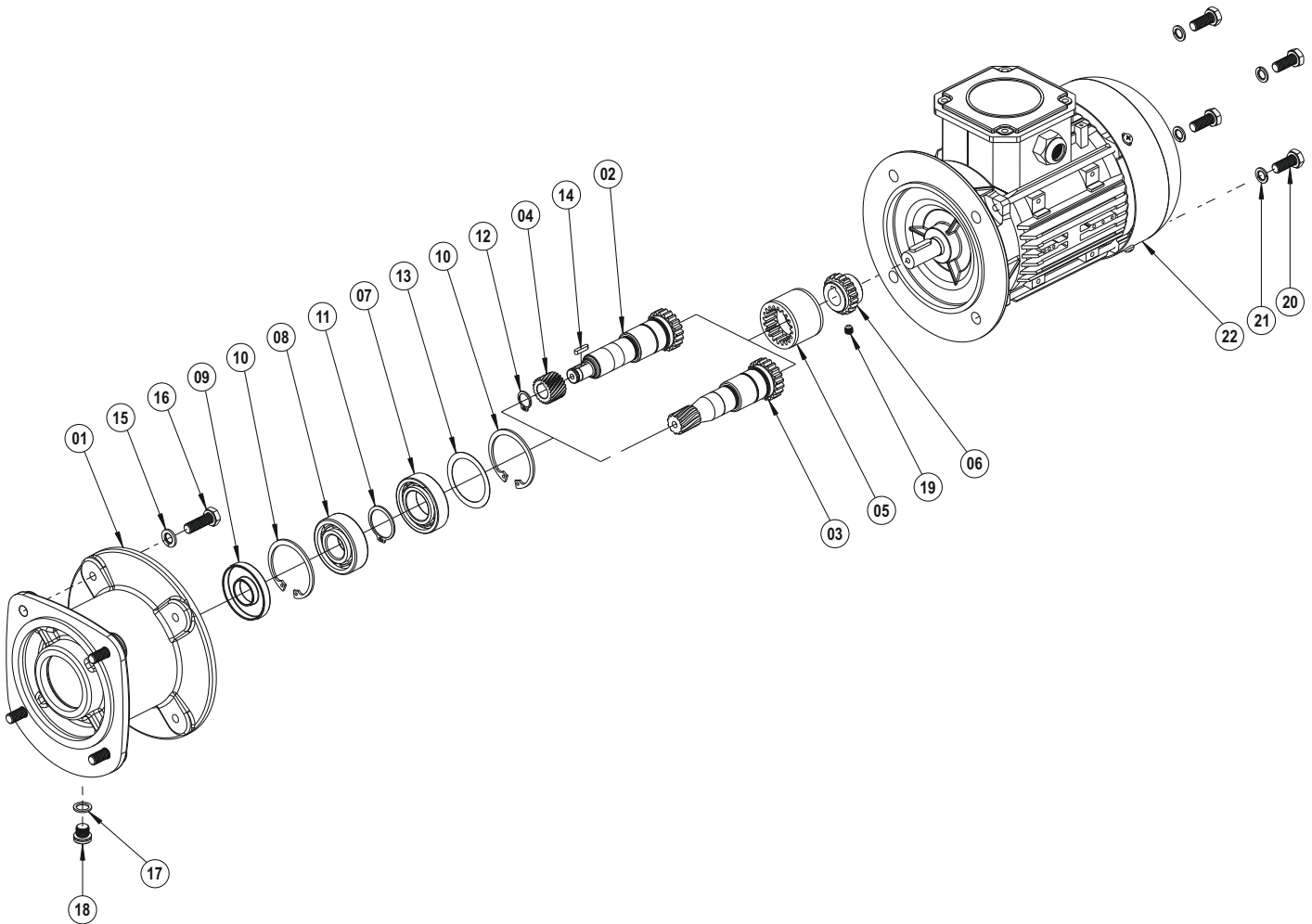
- 01 PSH Kit
- 02 B5 Output Flange
- 03 Pin
- 04 Bolt (DIN 912)



#### Torque Arm

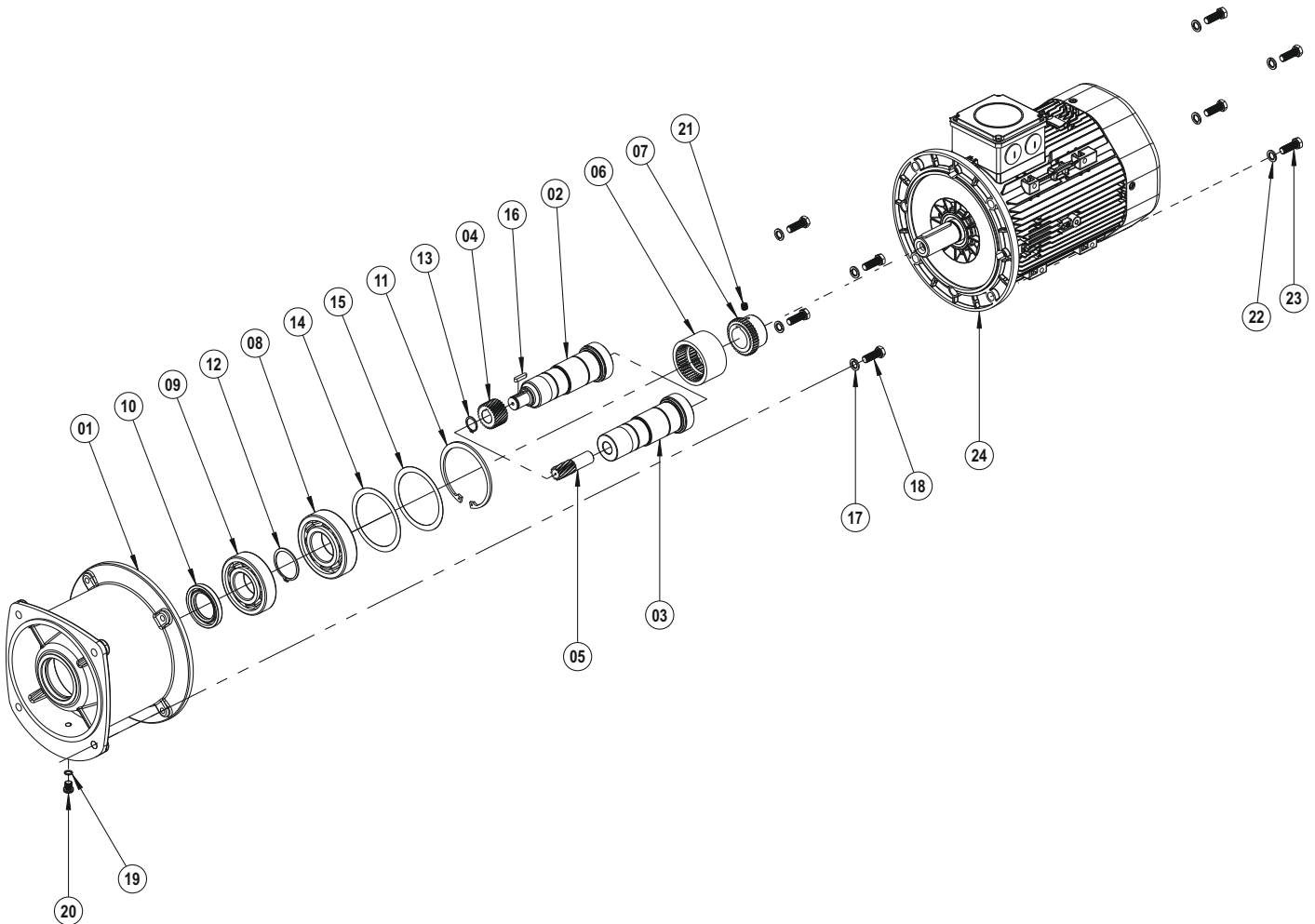
- 01 PSH Kit
- 02 Torque Arm
- 03 Rubber Buffer
- 04 Bolt (DIN 912)

The exploded image may vary depending on the body and motor size, please contact us for the detailed exploded image.



- 01 Gear Case
- 02 IEC Shaft (With Key)
- 03 IEC Shaft (With Gear)
- 04 Driving Pinion (With Key)
- 05 Plastic Coupling
- 06 Metal Coupling
- 07 Bearing
- 08 Bearing
- 09 Oil Seal
- 10 Circlip (DIN 472)
- 11 Circlip (DIN 471)
- 12 Circlip (DIN 471)
- 13 Shim (DIN 988)
- 14 Key (DIN 9885)
- 15 Washer (DIN 127)
- 16 Bolt (DIN 933)
- 17 Washer (DIN 7603)
- 18 Oil Plug (DIN 908)
- 19 Bolt (DIN 916)
- 20 Bolt (DIN 933)
- 21 Washer (DIN 127)
- 22 Motor

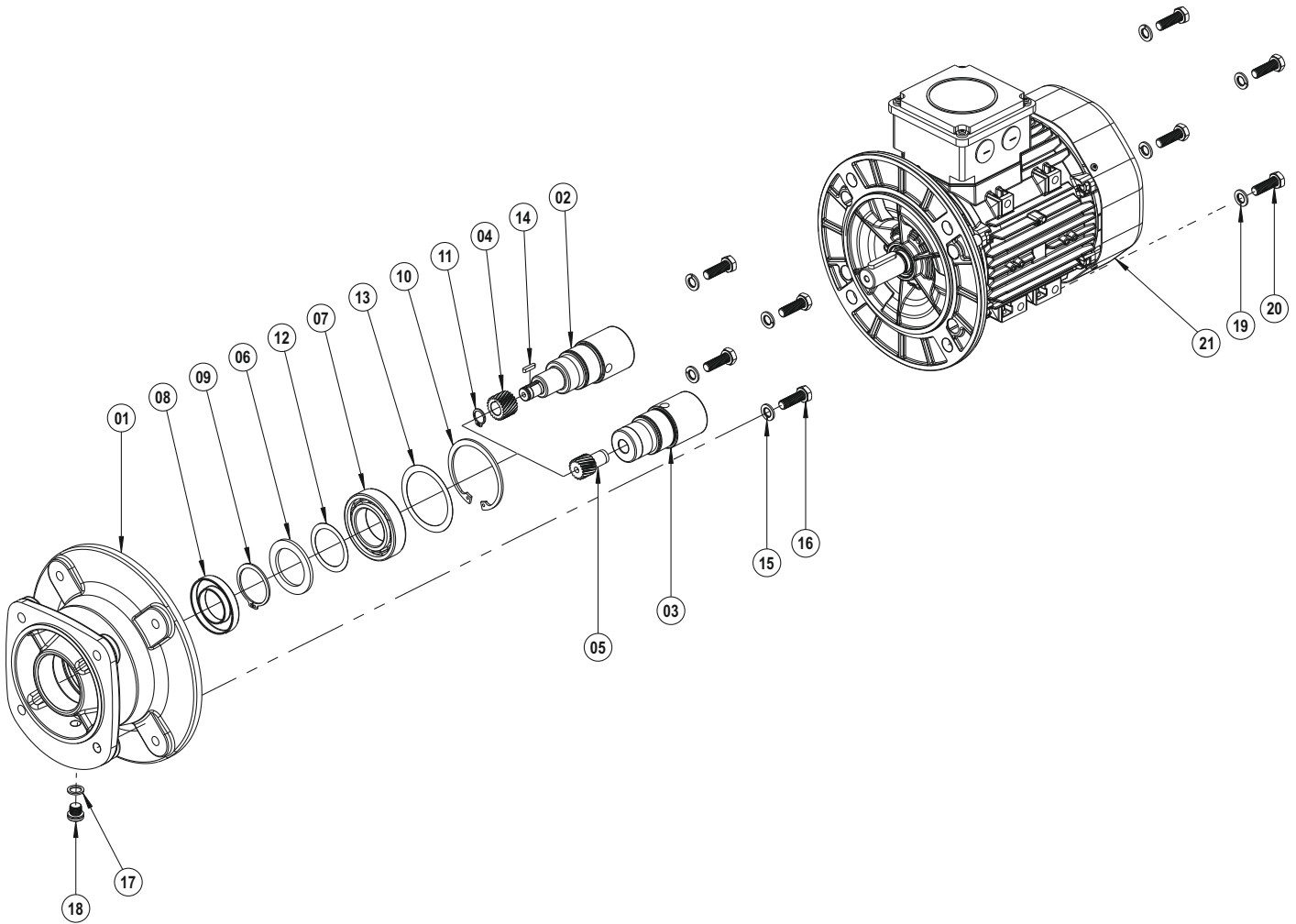
The exploded image may vary depending on the body and motor size, please contact us for the detailed exploded image.



- 01 Gear Case
- 02 IEC Shaft (With Key)
- 03 IEC Shaft
- 04 Driving Pinion (With Key)
- 05 Driving Pinion
- 06 Plastic Coupling
- 07 Metal Coupling
- 08 Bearing
- 09 Bearing
- 10 Oil Seal
- 11 Circlip (DIN 472)
- 12 Circlip (DIN 471)
- 13 Circlip (DIN 471)
- 14 Shim (DIN 988)
- 15 Shim (DIN 988)
- 16 Key (DIN 6885)
- 17 Washer (DIN 127)
- 18 Bolt (DIN 933)
- 19 Washer (DIN 7603)
- 20 Oil Plug (DIN 908)
- 21 Bolt (DIN 916)
- 22 Washer (DIN 127)
- 23 Bolt (DIN 933)
- 24 Motor

## PAM B5 / 63 ... 315

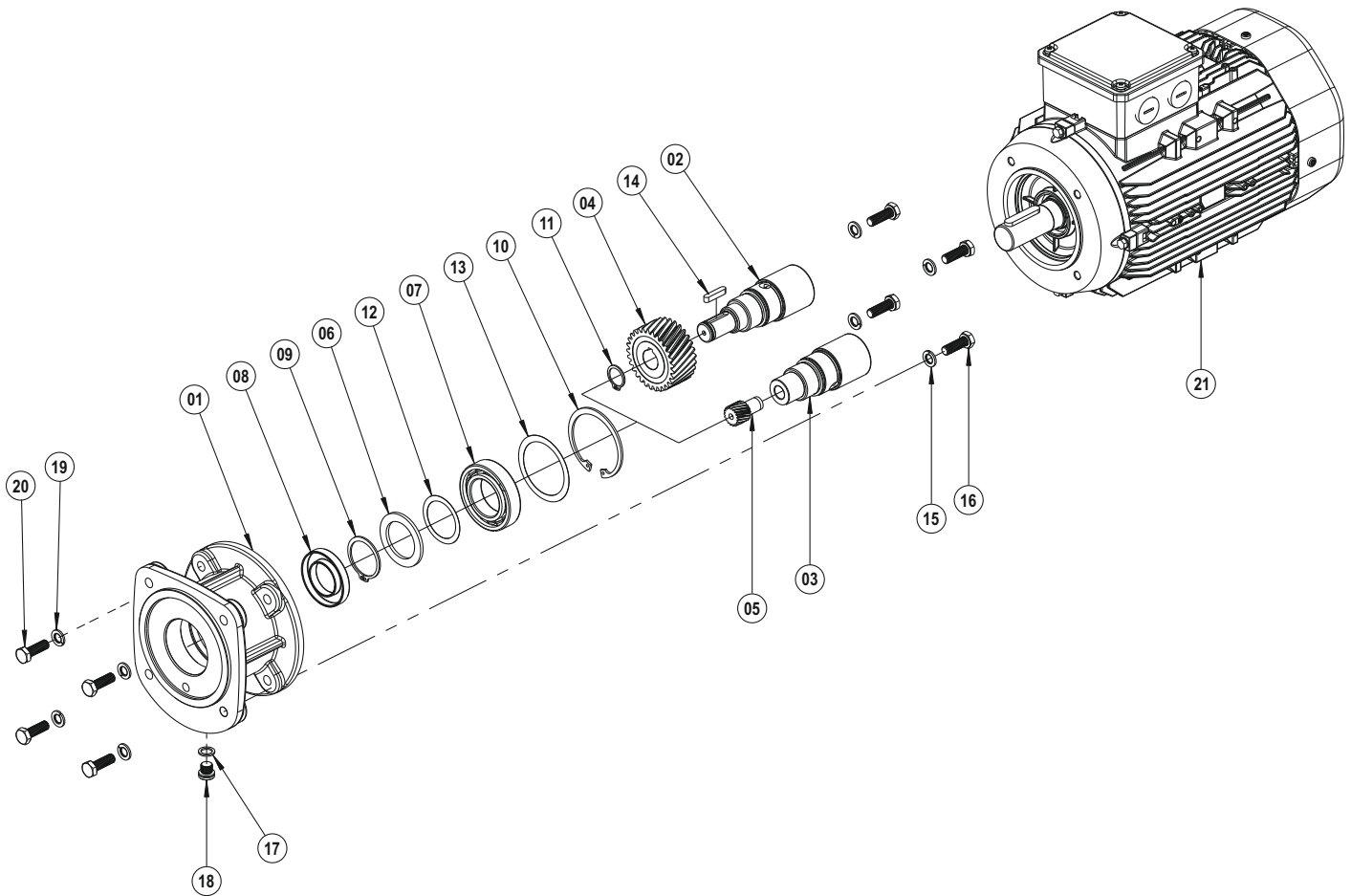
The exploded image may vary depending on the body and motor size, please contact us for the detailed exploded image.



- 01 Gear Case
- 02 PAM Shaft (With Key)
- 03 PAM Shaft
- 04 Driving Pinion (With Key)
- 05 Driving Pinion
- 06 Washer
- 07 Bearing
- 08 Oil Seal
- 09 Circlip (DIN 471)
- 10 Circlip (DIN 472)
- 11 Circlip (DIN 471)
- 12 Shim (DIN 988)
- 13 Shim (DIN 988)
- 14 Key (DIN 6885)
- 15 Washer (DIN 127)
- 16 Bolt (DIN 933)
- 17 Washer (DIN 7603)
- 18 Oil Plug (DIN 908)
- 19 Washer (DIN 127)
- 20 Bolt (DIN 933)
- 21 Motor

## PAM B14 / 63 ... 132

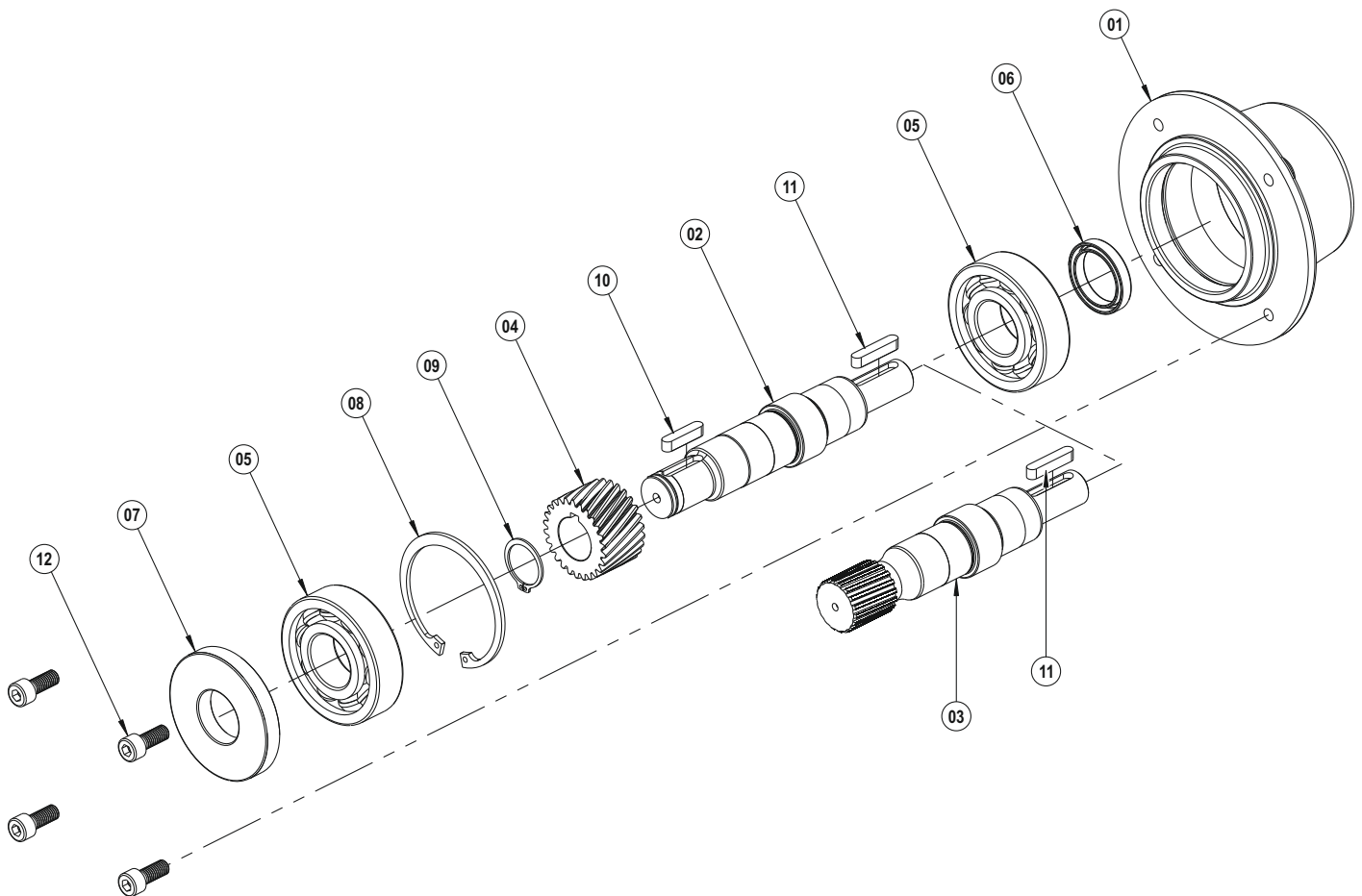
The exploded image may vary depending on the body and motor size, please contact us for the detailed exploded image.



- 01 Gear Case
- 02 PAM Shaft (With Key)
- 03 PAM Shaft
- 04 Driving Pinion (With Key)
- 05 Driving Pinion
- 06 Washer
- 07 Bearing
- 08 Oil Seal
- 09 Circlip (DIN 471)
- 10 Circlip (DIN 472)
- 11 Circlip (DIN 471)
- 12 Shim (DIN 988)
- 13 Shim (DIN 988)
- 14 Key (DIN 6885)
- 15 Washer (DIN 127)
- 16 Bolt (DIN 933)
- 17 Washer (DIN 7603)
- 18 Oil Plug (DIN 908)
- 19 Washer (DIN 127)
- 20 Bolt (DIN 933)
- 21 Motor

## W 109

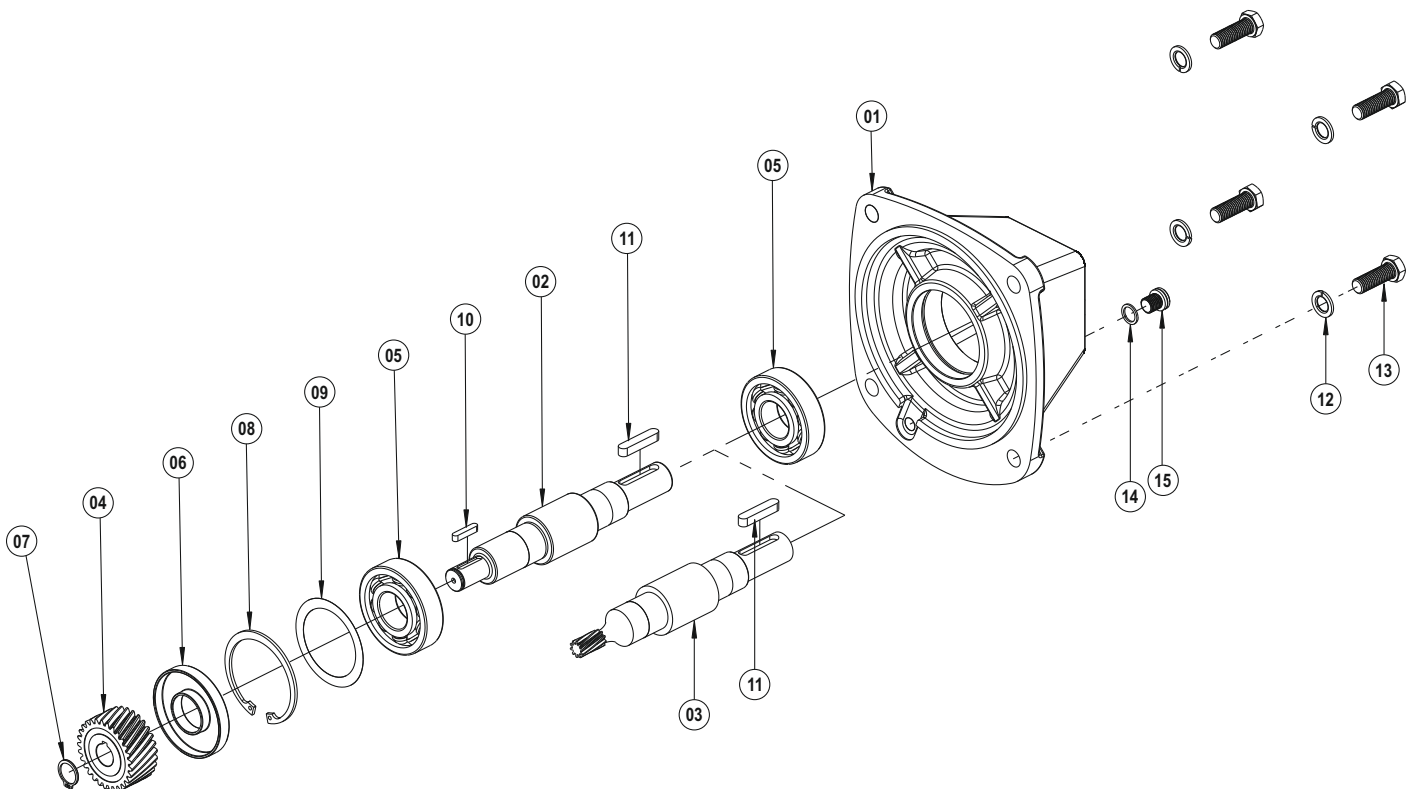
The exploded image may vary depending on the body and motor size, please contact us for the detailed exploded image.



- 01 Gear Case
- 02 W Shaft (With Key)
- 03 W Shaft (With Gear)
- 04 Driving Pinion
- 05 Bearing
- 06 Oil Seal
- 07 Oil Seal
- 08 Circlip (DIN 472)
- 09 Circlip (DIN 471)
- 10 Key (DIN 6885)
- 11 Key (DIN 6885)
- 12 Bolt (DIN 912)



The exploded image may vary depending on the body and motor size, please contact us for the detailed exploded image.



- 01 Gear Case
- 02 W Shaft (With Key)
- 03 W Shaft (With Gear)
- 04 Driving Pinion (With Key)
- 05 Bearing
- 06 Oil Seal
- 07 Circlip (DIN 471)
- 08 Circlip (DIN 472)
- 09 Shim (DIN 988)
- 10 Key (DIN 6885)
- 11 Key (DIN 6885)
- 12 Washer (DIN 127)
- 13 Bolt (DIN 933)
- 14 Washer (DIN 7603)
- 15 Oil Plug (DIN 908)





- Ata OSB Mah. Astim 1. Cad. No: 4, Pk 105 Efeler / Aydın / TÜRKİYE
- T: +90 256 231 19 12 - 16 (pbx)
- F: +90 256 231 19 17
- [info@pgr.com.tr](mailto:info@pgr.com.tr) - [satissonrasi@pgr.com.tr](mailto:satissonrasi@pgr.com.tr)
- [www.pgr.com.tr](http://www.pgr.com.tr)